

Uplands Initiative Elenydd (Central)

Archaeological Survey (Part Two)



For: The Royal Commission on the Ancient
and Historical Monuments of Wales

February 2010



Uplands Initiative Elenydd (Central)

Archaeological Survey (Part Two)

By

Jenny Hall MifA & Paul Sambrook MifA
Trysor

Trysor Project No. 2009/158

**For: The Royal Commission on the Ancient
and Historical Monuments of Wales**

Royal Commission Ref. No. RCS 1/2/144

February 2010



Cover photograph: A shooting butt (NPRN 503571) near Llyn y Cerrigllwydion Isaf

ELENYDD (CENTRAL)

RHIF YR ADRODDIAD - REPORT NUMBER: Trysor 2009/158

DYDDIAD 22ain Chwefror 2010

DATE

22nd February 2010

Paratowyd yr adroddiad hwn gan bartneriad Trysor. Mae wedi ei gael yn gywir ac yn derbyn ein sêl bendith.

This report was prepared by the Trysor partners. It has been checked and received our approval.

JENNY HALL MifA

J Hall

PAUL SAMBROOK MifA

P.P. Sambrook

DYDDIAD / DATE

22/02/2010

Croesawn unrhyw sylwadau ar gynnwys neu strwythur yr adroddiad hwn.

We welcome any comments on the content or structure of this report.

Introduction

This is the second part of a two part report.

Part One includes a synthesis of the results of fieldwork carried out by Trysor in the Elenydd (Central) study area in 2009.

Part Two includes location maps and the site gazetteer based on the findings of the fieldwork.

The layout of the report is self-explanatory; the site location maps (10 figures in total) precede the printout of the Site Gazetteer on page 12.

The location maps use the 2nd Edition Ordnance Survey maps of 1903-5 as background data as supplied by the RCAHMW for the use of the project

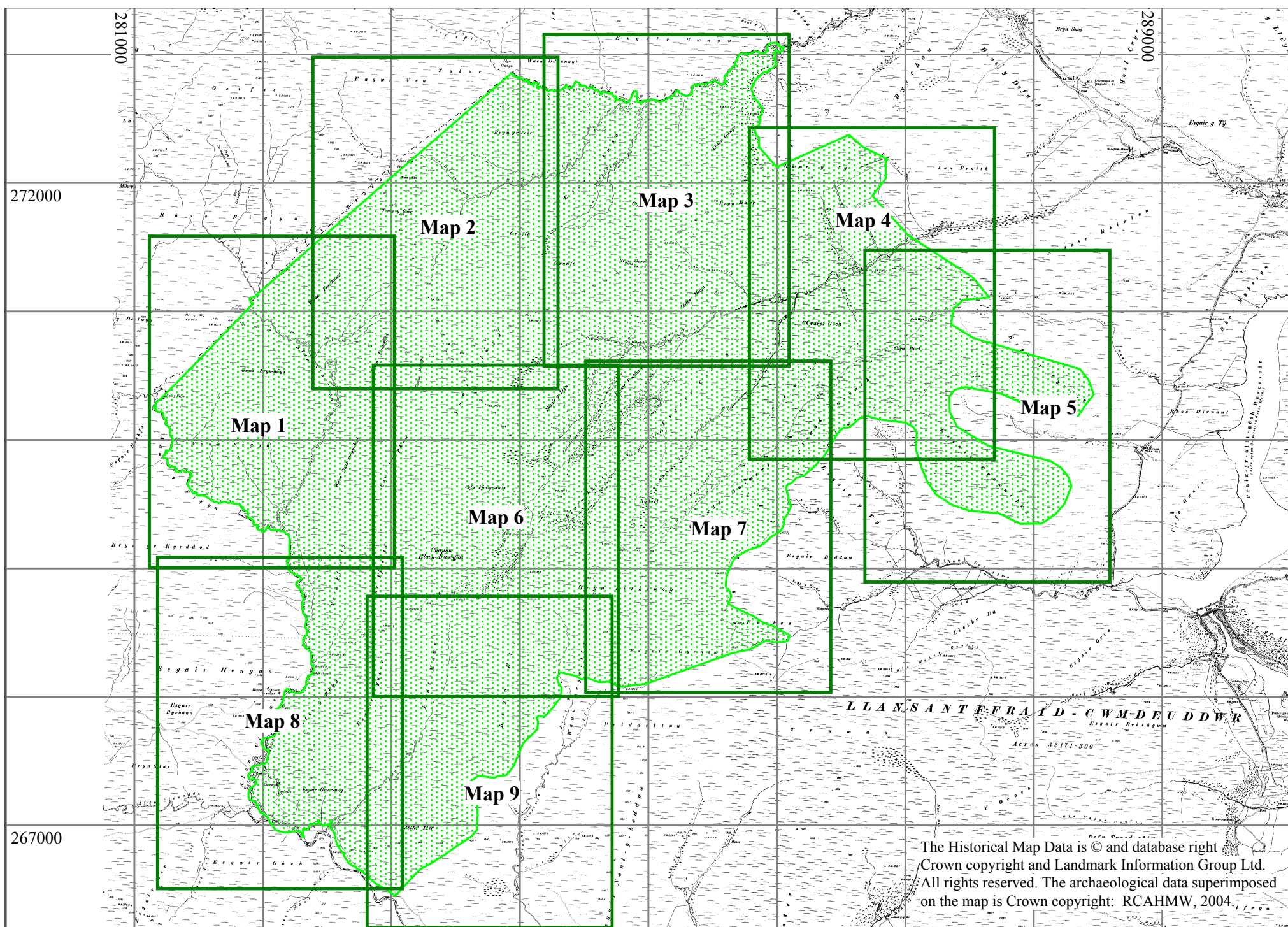
The Historical Map Data is © and database right Crown copyright and Landmark Information Group Ltd. All rights reserved. The archaeological data superimposed on the map is Crown copyright: RCAHMW, 2004.

The site gazetteer itself is a copy of the information in the project database submitted to the RCAHMW in digital format.

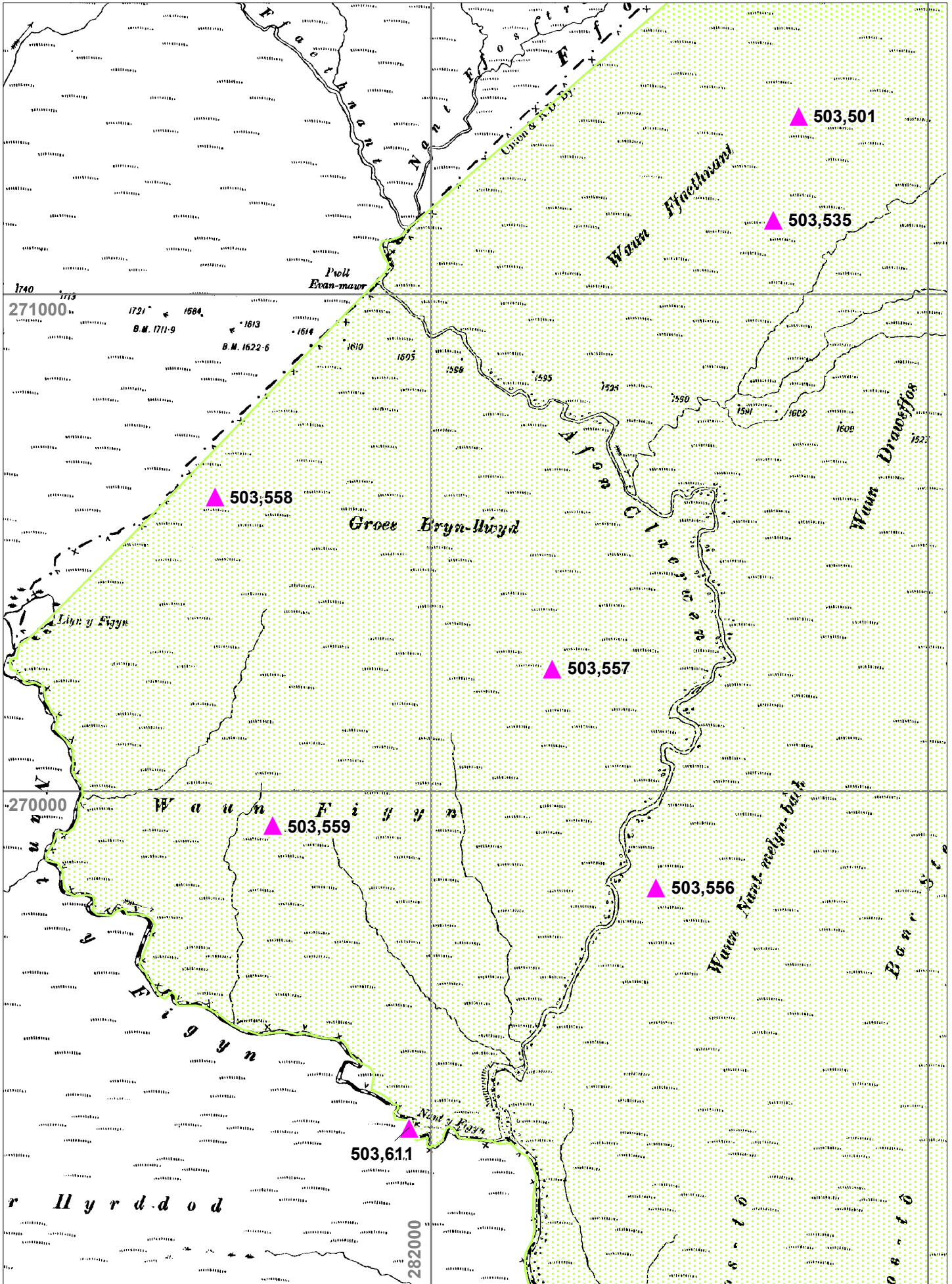
Jenny Hall & Paul Sambrook

Trysor

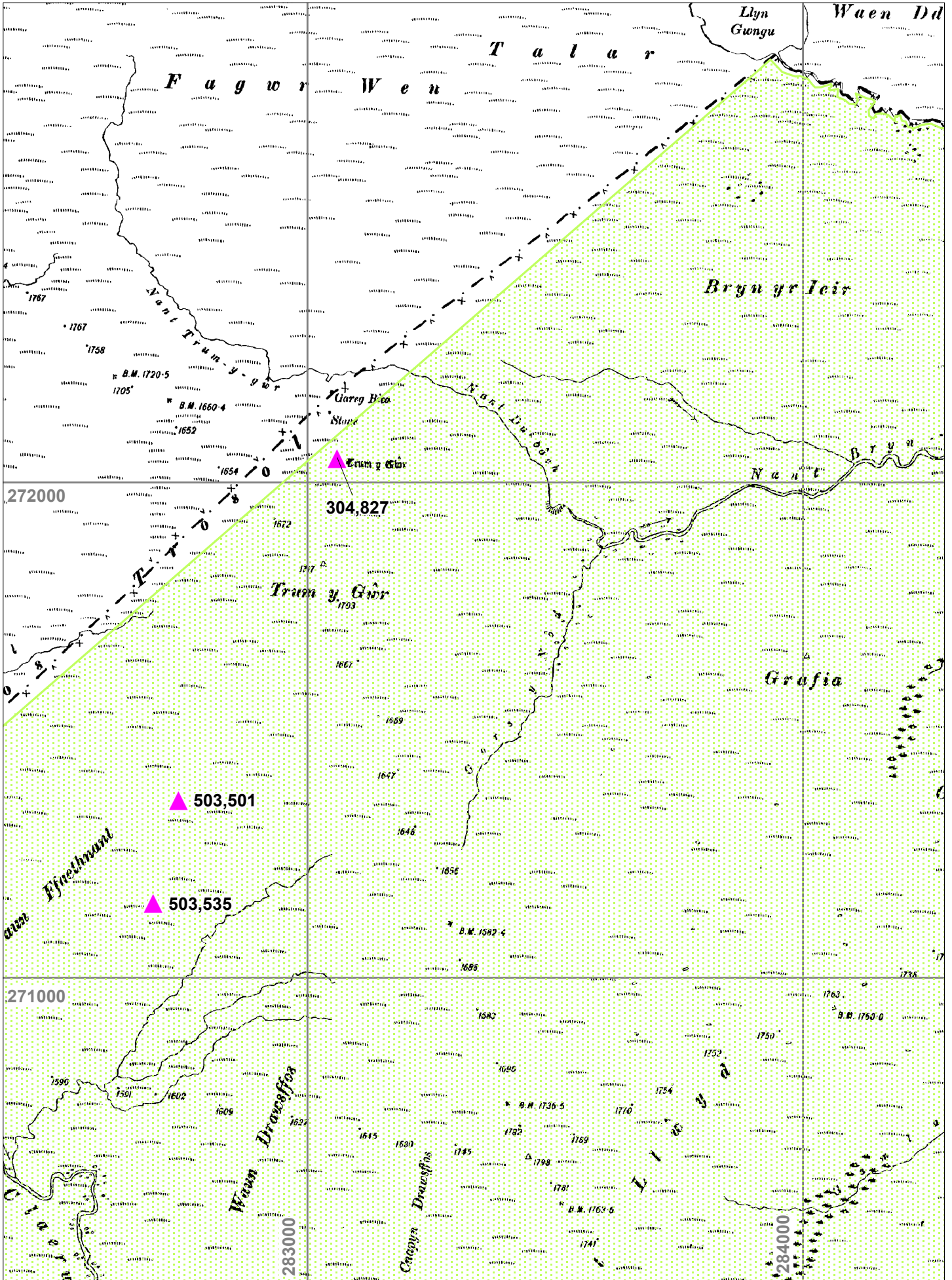
February 2010



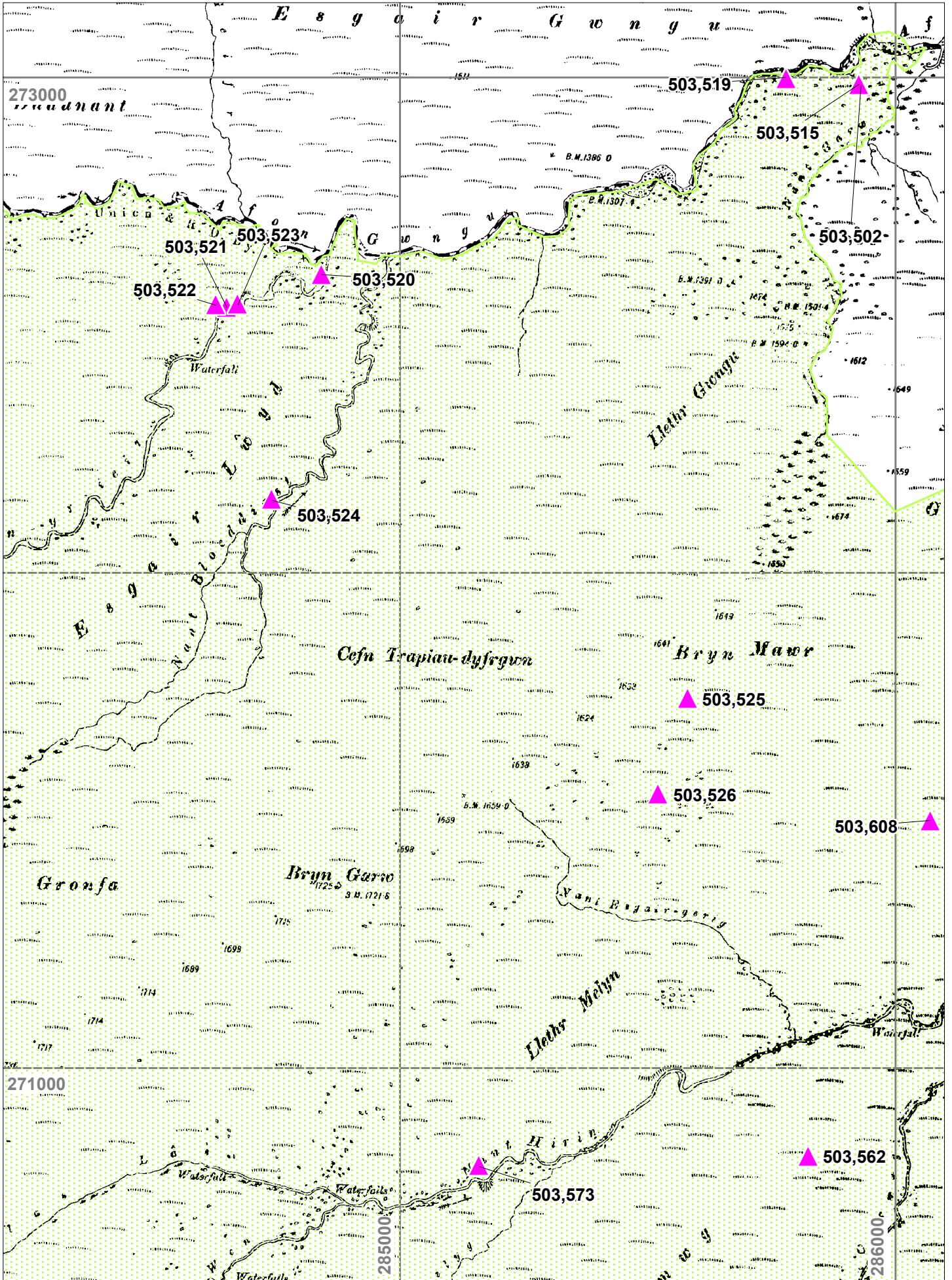
The Historical Map Data is © and database right
Crown copyright and Landmark Information Group Ltd.
All rights reserved. The archaeological data superimposed
on the map is Crown copyright: RCAHMW, 2004.



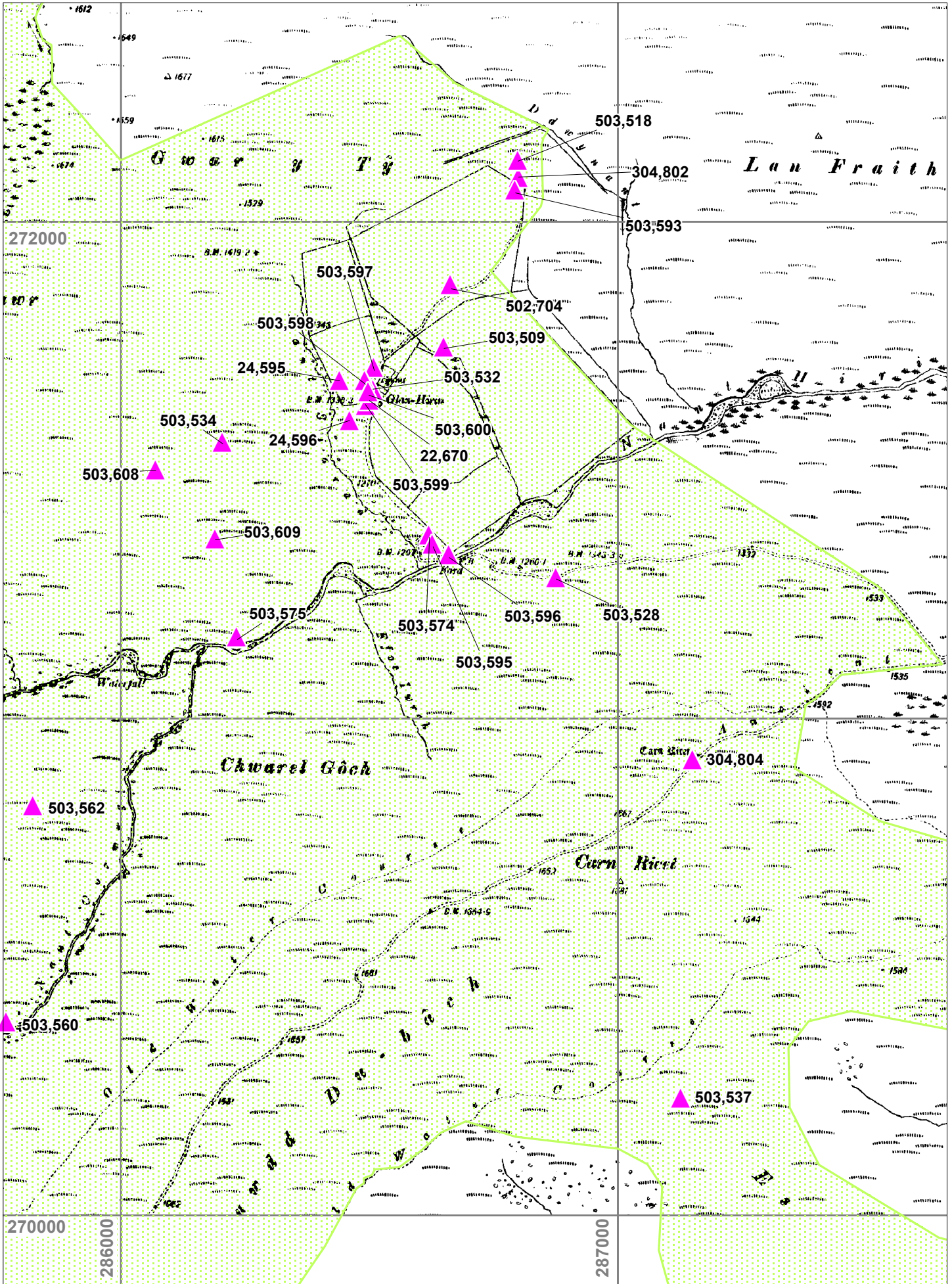
The Historical Map Data is © and database right Crown copyright and Landmark Information Group Ltd. All rights reserved. The archaeological data superimposed on the map is Crown copyright: RCAHMW, 2004.



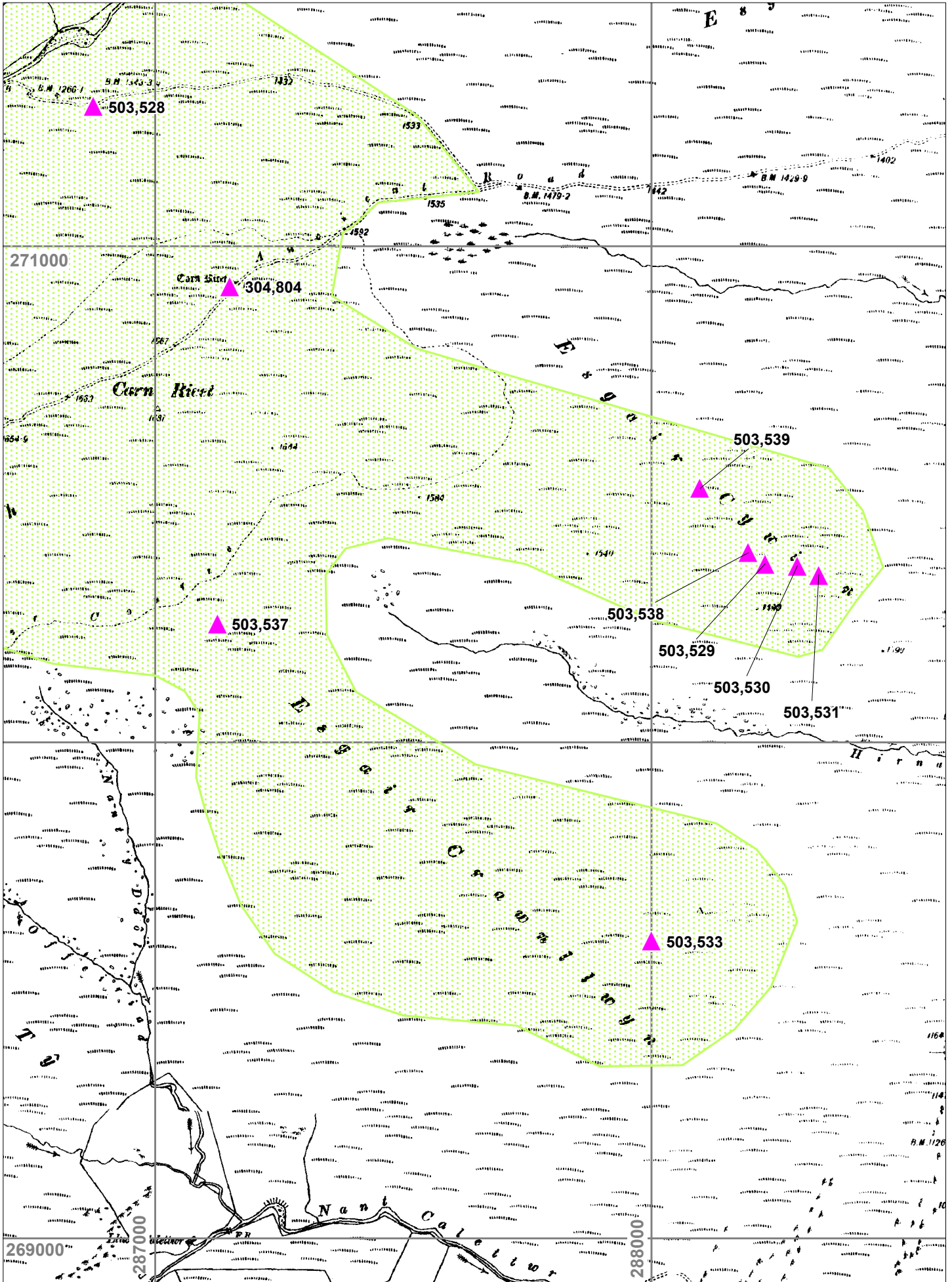
The Historical Map Data is © and database right Crown copyright and Landmark Information Group Ltd.
 All rights reserved. The archaeological data superimposed on the map is Crown copyright: RCAHMW, 2004.



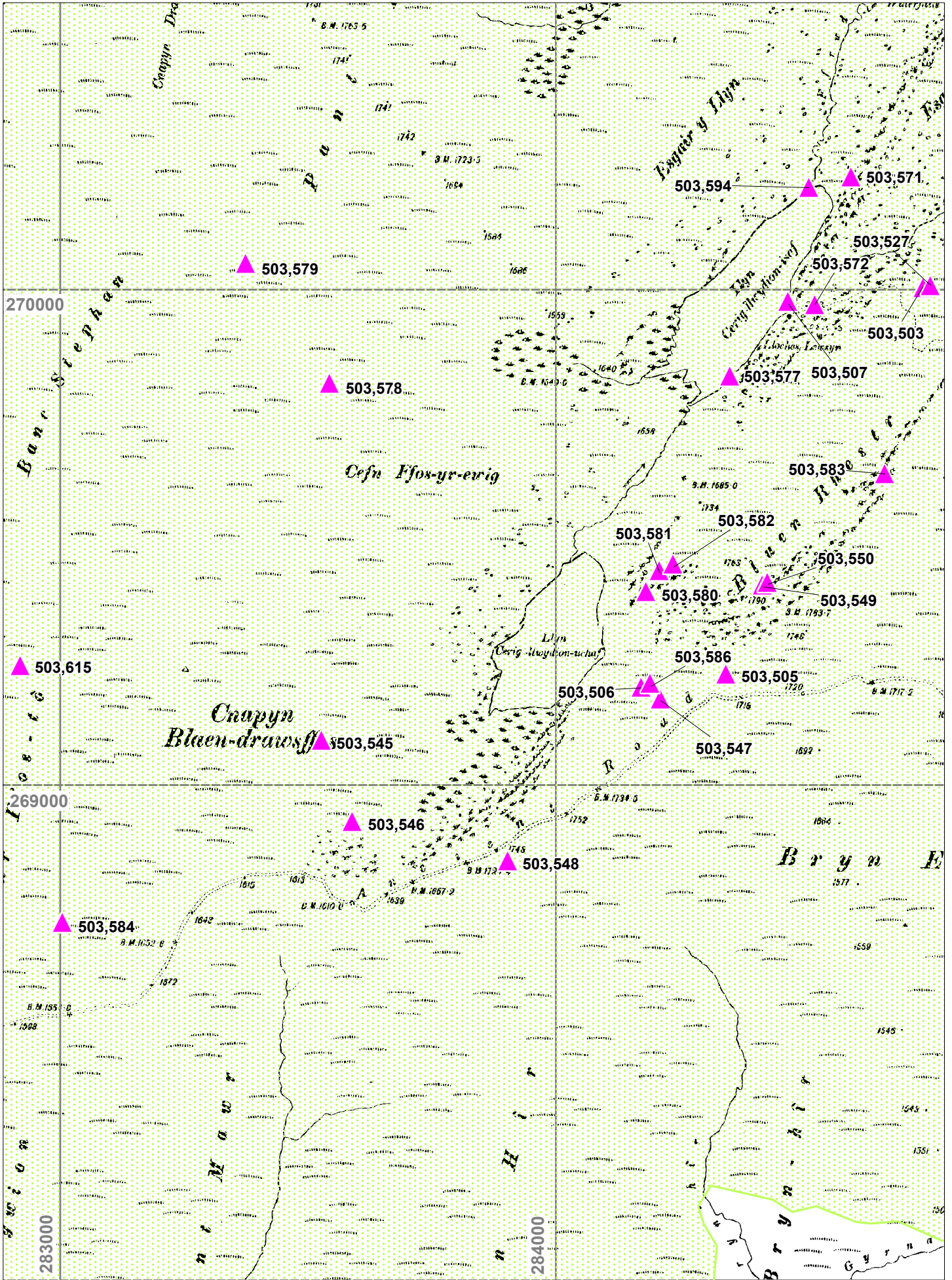
The Historical Map Data is © and database right Crown copyright and Landmark Information Group Ltd. All rights reserved. The archaeological data superimposed on the map is Crown copyright: RCAHMW, 2004.



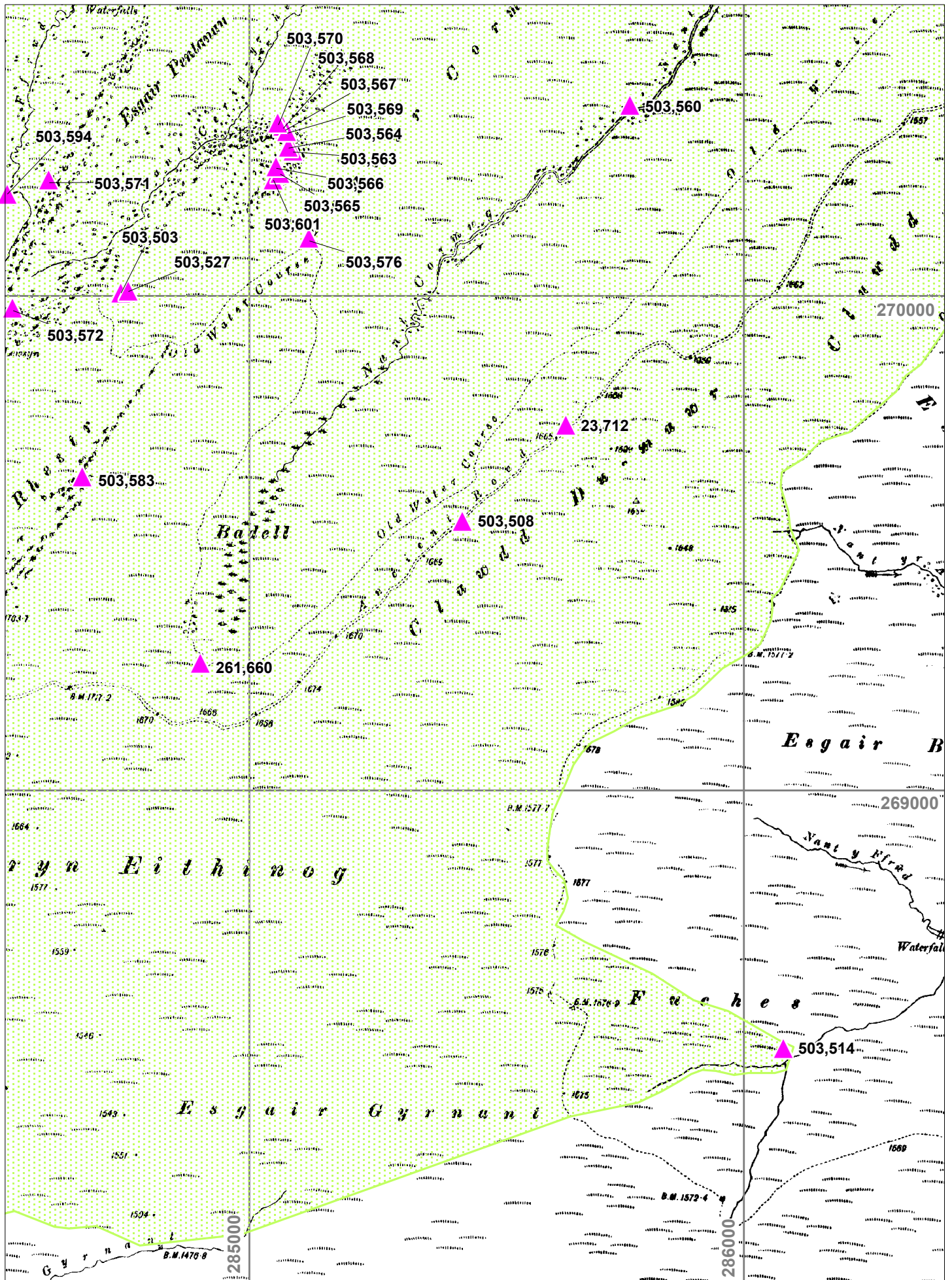
The Historical Map Data is © and database right Crown copyright and Landmark Information Group Ltd. All rights reserved. The archaeological data superimposed on the map is Crown copyright: RCAHMW, 2004.



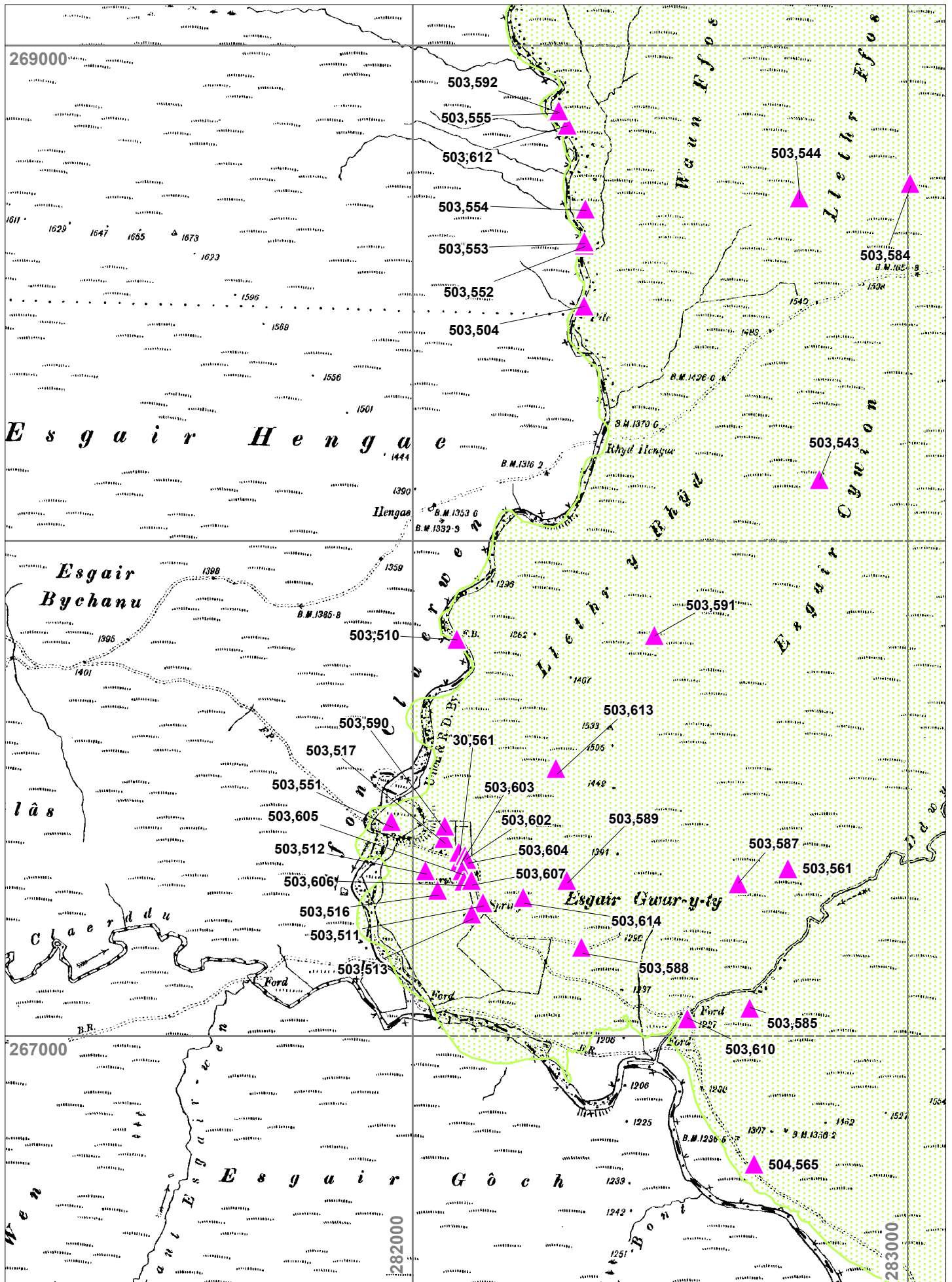
The Historical Map Data is © and database right Crown copyright and Landmark Information Group Ltd. All rights reserved. The archaeological data superimposed on the map is Crown copyright: RCAHMW, 2004.



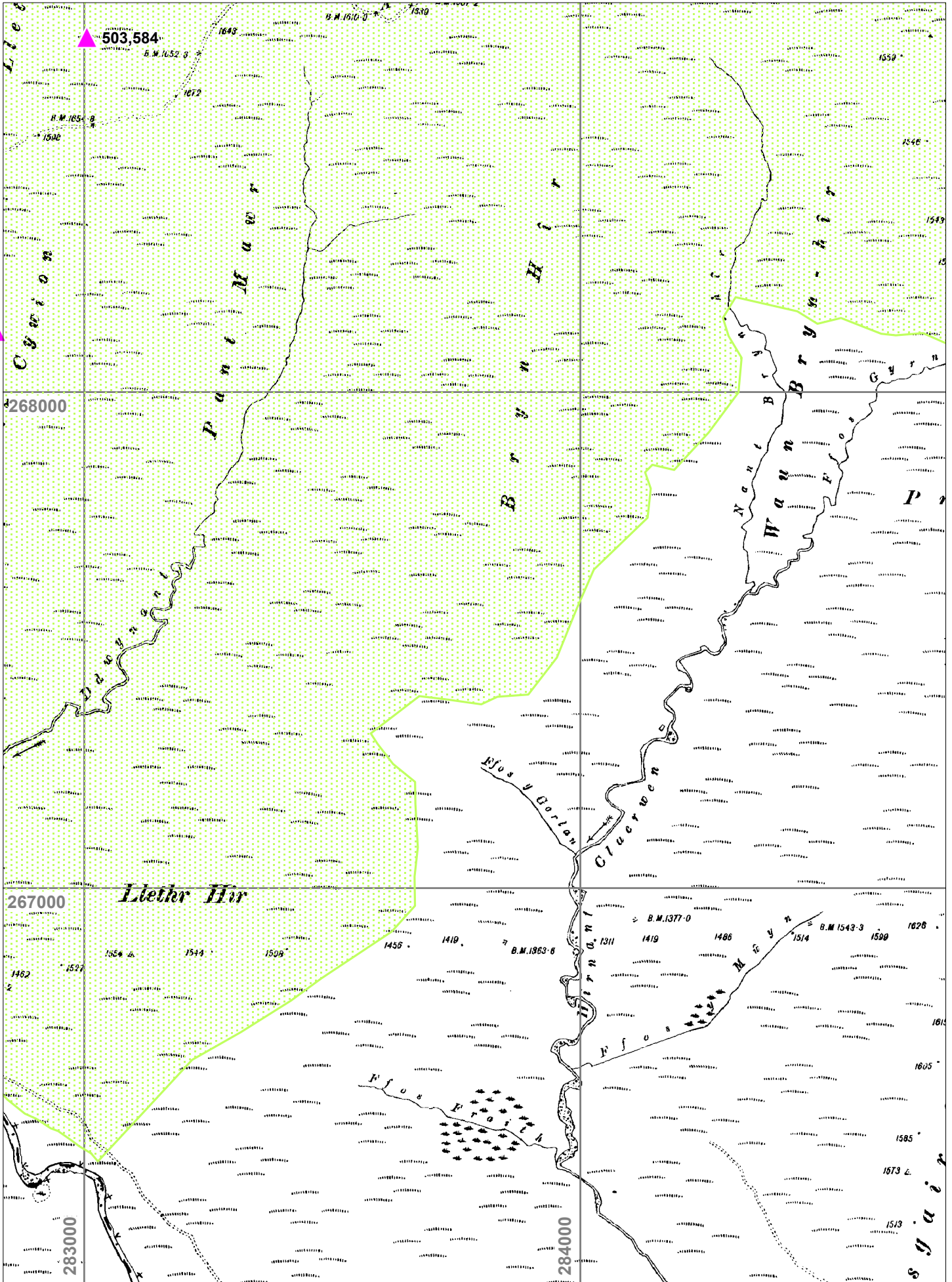
The Historical Map Data is © and database right Crown copyright and Landmark Information Group Ltd. All rights reserved. The archaeological data superimposed on the map is Crown copyright: RCAHMW, 2004.



The Historical Map Data is © and database right Crown copyright and Landmark Information Group Ltd. All rights reserved. The archaeological data superimposed on the map is Crown copyright: RCAHMW, 2004.



The Historical Map Data is © and database right Crown copyright and Landmark Information Group Ltd. All rights reserved. The archaeological data superimposed on the map is Crown copyright: RCAHMW, 2004.



The Historical Map Data is © and database right Crown copyright and Landmark Information Group Ltd. All rights reserved. The archaeological data superimposed on the map is Crown copyright: RCAHMW, 2004.

Site Gazetteer

NPRN: 22670

GLAN-HIRIN

FARMSTEAD

NGR: SN86507164 Grid reference taken at centre of site **Altitude:** 405
Period: Post Medieval **Broadclass:** Agriculture and Subsistence
Form: Complex **Condition:** V

Site Status:**Description:** The mid-C19th farmhouse and barn survive among the modern sheds of this sheep farm. (RFS)

Fields amended: Form, Condition, Land Use, UPD_On changed from 06/09/2005, Updater changed from SLE, Altitude, Origin - RC added, Short_text

The earliest reference to Glanhirin appears in a document dating to 1696 (Banks, 1880, 49) although there is no indication as to how long it had existed before that date. It is shown on the 1833 1 inch to 1 mile map as a building with a long straight rectangular parcel of land to the east and a field beyond. On the Llansanffraid Cwmteuddwr parish tithe map of 1841 it is shown as two fields, Bryn Bychan and Bryn Llwyd with the building external to Bryn Llwyd. At that time it was owned by Henry Pulham Clinton, Duke of Newcastle, and, according to the 1841 census, tenanted by Rees and Margaret Lewis. By the time of the 1st edition 1:10560 Ordnance Survey map of 1891, the two fields have been subsumed into a larger, more rectilinear field system, closer to the field system in existence today. Since the late 19th century the farm has been part of the estate formed by the Birmingham Corporation when the Elan Valley reservoirs were created. Erwyd Howells writes about Glanhirin in his 2005 book "Good Men and True" giving some stories about its former tenants. In 2009 Glanhirin was still occupied and farmed by tenants.

In the 19th century and early 20th century access to the post medieval farmstead was by a trackway, NPRN 503528. The modern access track, NPRN 502704, was built by the Elan estate in the later 20th century. The field system NPRN 503509 developed during the mid 19th century to resemble the field system in existence today. A group of possible pillow mounds, NPRN 24595, now badly damaged, lie within the modern field system. Two other previously recorded groups of pillow mounds, NPRNs 24596 and 304802, were discounted as natural features during Upland Survey in 2009. The farmyard now consists of the farmhouse, NPRN 503532, and adjoining stone-built building, NPRN 503600, as well as more recent agricultural buildings, NPRN 503597, 503598 and 503599.

Source: Banks, R.W., 1880. 'The Grange of Cwmtoyddwr', Archaeologia Cambrensis, 4th series XI, p.49.

J.J. Hall, Trysor, 31 January 2010

HER PRN:**Relationships:**

Consists of 503509
 Consists of 503532
 Consists of 503597
 Consists of 503598
 Consists of 503599
 Consists of 503600

Photographs:

ELNC2009_107 18/06/2009 The farmstead at Glanhirin, looking southeast.
 ELNC2009_108 19/06/2009 The farmstead at Glanhirin, looking southeast.
 ELNC2009_112 30/09/2009 Glanhirin, looking north.

Visited on: Field Observation 14-Oct-2009 TR JJH

NPRN: 23712

ANCIENT ROAD (1);MONK'S WAY ROAD

NGR: SN85646974 Grid reference taken at point along linear site **Altitude:** 504
Period: Post Medieval? **Broadclass:** Transport
Form: Earthwork **Condition:** V

Site Status:

Description: High level road from Abbey Cwmhir through Rads. to Strata Florida Abbey, Cards. Road 8/10 ft. wide. Surface raised above general level. Appears not to have been paved.

Fields amended: MDesc, Form, Condition, Land_Use, UPD_On changed from 06/07/1999, Updater changed from SLE, Origin, RC added, Short_text

It has been assumed during Uplands Survey in 2009 that this record is an overall record for a route from Abbey Cwmhir to Strata Florida. The most recent discussion about this route is Andrew Fleming's 2009 paper "The Making of a Medieval Road: The Monks' Trod Routeway, Mid Wales" which puts forward the theory that it was a consciously engineered route for the monasteries and/or Welsh princes. NPRN 503508 is the section from Rhyd Hengae at SN8239368206, to Carn Ricet at SN8715370924. NPRN 261236 is the section to the east of this from Carn Ricet to Aberhenllan. J.J. Hall, Trysor, 31 January 2010

HER PRN:**Relationships:**

Consists of 503508
 Consists of 261236

Photographs:

Visited on: Field Observation 12-Oct-2009 TR JH

NPRN: 24595

GLAN-HIRIN, PILLOW MOUNDS (1) RABBIT WARREN

NGR: SN86447168 Grid reference taken at centre of site **Altitude:** 405
Period: Post Medieval **Broadclass:** Agriculture and Subsistence
Form: Earthwork **Condition:** D

Site Status:

Description: One of 2 groups of pillow mounds. Six grossly mutilated mounds 8 m. apart. Best preserved is 7 m. long.

Fields amended: Form, Condition, Land Use, UPD_On changed from 04/02/2002, Updater changed from JW, Altitude, Origin - RC added, Short_text

These damaged earthwork features lie on a west-facing slope within the modern field system at Glanhirin. They have been described as pillow mounds, the largest being 7m long, parallel to the slope, and 0.30m high. All of them are badly damaged and appear to have been dug into so that their profiles are not parallel to the sloping ground surface but slight at the top with most of the height at the bottom end. J.J. Hall, Trysor, 31 January 2010

HER PRN: CPAT 4122**Relationships:****Photographs:**

ELNC2009_109 19/06/2009 The earthwork features on the slope, looking north.
 ELNC2009_110 19/06/2009 The earthwork features on the slope, looking east.

Visited on: Field Observation 19-Jun-2009 TR JH

NPRN: 24596

GLAN-HIRIN, PILLOW MOUNDS (2)

NATURAL FEATURE?

NGR: SN86467160 Grid reference taken at centre of site**Altitude:** 400**Period:** General **Broadclass:** Monument <By Form>**Form:** Documents **Condition:** U**Site Status:****Description:** A group of 3 mounds near Group (1). Mounds 18 m. and 11 m. apart. similar dimensions to (1).

Fields amended: Form, Condition, Land Use, UPD_On changed from 04/02/2002, Updater changed from JW, Altitude, Origin - RC added, Short_text,

When visited during Upland Survey in 2009, no trace of these previously identified pillow mounds could be found. The small valley has many geomorphological features and it is thought that natural features may have been mistaken for pillow mounds. J.J. Hall, Trysor, 31 January 2010

HER PRN:**Relationships:****Photographs:****Visited on:** Field Observation 14-Oct-2009 TR JJH**NPRN:** 30561

CLAERWEN, FARMHOUSE II

FARMHOUSE

NGR: SN8209567365 Grid reference taken at centre of site**Altitude:** 397**Period:** Modern **Broadclass:** Domestic**Form:** Building **Condition:** A**Site Status:****Description:** 1. Ruins of earlier house; central entry stair passage later house in range with cowhouse.
2. Late C19 storeyed farmhouse of central stair passage plan. Farm buildings to the south of the house include in a single range with a pegged king-post roof, a cowshed with central feed passage, a hay barn and loose-box or calf-pen. The ruins of an earlier house lie between the present house and farm buildings.Source: NMR Site Files - report by R.F. Suggett and G.A. Ward, RCAHMW, August 1988
S.L. Evans, RCAHMW 3rd June 2005

Fields amended: Condition, Land_Use, UPD_On changed from 06/09/2005, Updater changed from SLE, Origin, RC added, Short_text, NGR changed from SN82126730, Short_text; Period changed from Post Medieval

According to Erwyd Howells in his 2005 book "Good Men and True" page 32, the present day farmhouse at Claerwen was built in 1922. Certainly, the 1905 Ordnance Survey map shows the only the former farmhouse as does the 1st edition map of 1891. Erwyd Howells also reports that the farmhouse at Claerwen was damaged during the Second World War by military training activities. The farmhouse today is still occupied. J.J. Hall, Trysor, 31 January 2010

HER PRN:**Relationships:****Photographs:**

Part of 503516 ELNC2009_111 11/09/2009 Farmhouse at Claerwen, looking northeast.

Visited on: Field Observation 13-Jul-2009 TR JJH

NPRN: 261660

LLETHR DU WATERCOURSE

LEAT

NGR: SN87176827 Grid reference taken at point along linear site **Altitude:** 480
Period: Post Medieval **Broadclass:** Water Supply and Drainage
Form: Earthwork **Condition:** V

Site Status:

Description: Line of old water course. E / W orientation, along Llethr Du slope. Varies from 1 - 2 m in width. Bank 0.3m-0.5m high. Ditch on S side. Related to Cwm Elan Lead Mine (RSJ 2000).

Fields Amended: Altitude, Land_Use, Short text, Type changed from Bank (Earthwork), Broadclass,

This record appears to be for the same feature as NPRN 262462

This earthwork watercourse is a former leat that took water from Llyn Cerrigllwydion Isaf for approximately 16km to feed into the Nant Methan providing a head of water for the waterwheels at Cwm Elan mine, NPRN 34022. The leat was dug over three months in 1876 by the New Cwm Elan mine company, according to David Bick in his 1991 book *The Old Metal Mines of mid-Wales, Part 6 A Miscellany*, page 21. The leat is as described above except for a section on Moelfryn at SN8946966376 where it is taken across the level ridge top as a cutting with pronounced banks either side. J.J. Hall, Trysor, 11 December 2009

HER PRN: CPAT 56181**Relationships:**

Associated with

503507

Photographs:

ELNC2009_113	13/10/2009	Rock-cut leat close to Llyn Cerrigllwydion Isaf, looking east.
ELNC2009_114	13/10/2009	Detail of rock-cut leat, with shelter NPRN 503572 towards the top left of the photograph, looking east.
ELNC2009_115	14/10/2009	Leat cut through rock at SN8480769918, looking southwest.

Visited on:

NPRN: 304802

DDWYNANT, RABBIT WARREN

NATURAL FEATURE?

NGR: SN86807209 Grid reference taken at centre of site**Altitude:** 413**Period:** General **Broadclass:** Monument <By Form>**Form:** Documents **Condition:** U**Site Status:**

Description: A group of three pillow mounds, each 6.5m by 3.5m and 0.3m high, set on open moorland within 20m of formerly enclosed land. The mounds have all been dug into.
(source Os495card; SN87SE7)
J.Wiles 11.04.02

Fields amended: Form, Condition, Land Use, UPD_On, Updater, Altitude, Origin - RC added, Short_text

When visited during Upland Survey in 2009, earthwork features could be seen but were thought to be natural features. This area has many small-scale geomorphological features and it is thought that these may have been mistaken for pillow mounds. J.J. Hall, Trysor, 31 January 2010

HER PRN: CPAT 4121**Relationships:****Photographs:**

Visited on: Field Observation 18-Jun-2009 TR JJH

NPRN: 304804

CARN RICET

CAIRN

NGR: SN87157092 Grid reference taken at centre of site**Altitude:** 500**Period:** Bronze Age? **Broadclass:** Religious Ritual and Funerary**Form:** Earthwork **Condition:** D**Site Status:**

Description: 1) A relatively modern cairn, 2.0m in diameter and 0.4m high, appears to have been raised from a prehistoric cairn, which is no longer in evidence. The recent cairn is first stated to have served to mark the boundary of a sheepwalk and is then suggested as a drovers' road mark.
(source Os495card; SN87SE1)
J.Wiles 11.04.02

2) Fields amended: Land_use, Condition, PRN, Trust, Origin, added in RC, UPD_On, Updater, Short_text

A very denuded stone cairn, disturbed by a trackway NPRN 503508. The feature is now turf-covered and hard to define. The small amount of stone visible on the surface would appear to be the remains of the more recent cairn mentioned in (1) above. J.J. Hall, Trysor, 18 January 2010

HER PRN: CPAT 818**Relationships:****Photographs:**

ELNC2009_116 12/07/2009 The very denuded remains of Carn Ricet, looking northeast.

Visited on: Field Observation 12-Jul-2009 TR JJH

NPRN: 304827

TRUM-Y-GAER, STONES

NATURAL FEATURE

NGR: SN83067205 Grid reference taken at centre of site **Altitude:** 505
Period: General **Broadclass:** Monument <By Form>
Form: Landform **Condition:** U

Site Status:

Description: 1) There are three stones recorded here: Trum-y-Gwr, at SN83067206; Gareg Bica, at SN83037217; at SN83047214, all acting as boundary markers. Whilst all three have been seen as natural features, 'parts of an outcrop of shale which happens to make a straight line', both Trum-y-Gwr and Gareg Bica (the Fairy Stone) have been seen as possible medieval standing stones.
 (source Os495card; SN87SW1)
 J.Wiles 15.04.02

2) Fields amended: Type changed from STANDING STONE, Form1 changed from Documents, Origin, added RC, UPD_ON changed from 11/10/2005, Updater changed from RC_, Land_Use

The features all seem to be as described above, natural features, part of a rock outcrop. J.J. Hall, Trysor, 11 February 2010

HER PRN: CPAT 817

Relationships:

Photographs:

ELNC2009_117 19/06/2009 Natural outcrop.

Visited on: Field Observation 19-Jun-2009 TR JJH

NPRN: 502704

GLANHIRIN, TRACKWAY I

TRACKWAY

NGR: SN8735072879 Grid reference taken at point along linear site **Altitude:** 395
Period: Modern **Broadclass:** Transport
Form: Earthwork **Condition:** A

Site Status:

Description: A modern, metalled access trackway built by the Elan Estate to connect Glanhirin farm to the Cwmystwyth to Rhayader road. It runs for 1.8km and crosses the Afon Elan by bridge NPRN 502722. The tenants of Glanhirin informed the 2009 Uplands Initiative project that they originally crossed the Elan by ford close to the present bridge. There was no trackway here before the later 20th century. J.J. Hall, Trysor, 27 October 2009

HER PRN:

Relationships:

Photographs:

Visited on:

NPRN: 503501

WAUN FFAETHNANT, RAIN GAUGE II

RAIN GAUGE

NGR: SN8274071360 Grid reference taken at centre of site**Altitude:** 507**Period:** Modern **Broadclass:** Education**Form:** Other Structure **Condition:** C**Site Status:**

Description: A rain gauge shown on modern Ordnance Survey mapping. When observed in June 2009 it was a square enclosure, 4m by 4m, defined by a wooden post and wire strand fence. In the centre of the enclosure was a copper rain-collecting pot. The wooden posts were lichen-covered and decaying, and the wire strands were detached from the posts. The vegetation in the locality in June 2009 was purple moor grass. J.J. Hall, Trysor, 29 June 2009

HER PRN:**Relationships:****Photographs:**

ELNC2009_002 19/06/2009 Rain gauge, looking south.
 ELNC2009_003 19/06/2009 Detail of rain gauge.

Visited on: Field Observation 19-Jun-2009 TR JJH

NPRN: 503502

NANT GARW, BUILDING

COTTAGE

NGR: SN8593072983 Grid reference taken at centre of site**Altitude:** 386**Period:** Post Medieval **Broadclass:** Domestic**Form:** Ruin **Condition:** C**Site Status:**

Description: A drystone, rectangular structure on the southern side of the Afon Gwngu, close to where the Nant Garw joins it. The building measured 7m west northwest to east southeast by 6.75m. The walls were 0.70m wide and stood to a maximum of height of 0.20m. Rubble was scattered over the site, either side of the walls, particularly concentrated at the east southeast end. There was a suggestion of an internal structure in the northwest corner as shown by a squarish spread of stone, 1.5m by 2m. There may have been an entrance in the western corner. A more recent stone pile, NPRN 503515, has been erected on the remains of the westernmost wall. J.J. Hall, Trysor, 29 June 2009

HER PRN: CPAT 4120**Relationships:****Photographs:**

ELNC2009_089 14/06/2009 Structure, looking northwest.
 ELNC2009_090 14/06/2009 Structure, looking north
 northeast.

Visited on: Field Observation 14-Jun-2009 TR JJH

NPRN: 503503

LLOCHES LEWSYN, SHEEP FOLD

SHEEP FOLD

NGR: SN8474170006 Grid reference taken at centre of site **Altitude:** 484
Period: Modern **Broadclass:** Agriculture and Subsistence
Form: Other Structure **Condition:** C

Site Status:

Description: A large sheep fold, 60m north-south by 27m east to west lying on an east-facing slope. It is shown on modern Ordnance Survey mapping but not on earlier editions. The fold is defined by post and wire fencing, now partially collapsed. There is a sheep dip, NPRN 503527, formerly within a tin shed, on the eastern edge of the field system. J.J. Hall, Trysor, 29 June 2009

HER PRN:**Relationships:**

Associated with 503527

Photographs:

ELNC2009_068 14/10/2009 Sheep fold and sheep dip NPRN 503527, looking west.
 ELNC2009_069 14/10/2009 Sheep fold and sheep dip NPRN 503527, looking west.

Visited on: Field Observation 14-Oct-2009 TR JJH

NPRN: 503504

CLAERWEN, FOLD

SHEEP FOLD?

NGR: SN8234768473 Grid reference taken at centre of site **Altitude:** 419
Period: Post Medieval **Broadclass:** Agriculture and Subsistence
Form: Documents **Condition:** E

Site Status:

Description: A small, two-celled sheep fold shown on the 1st edition 1:10560 map of 1891 tight against the eastern side of the Afon Claerwen. When visited in September 2009, no trace of the sheep fold was found and it was assumed it had been eroded away by the river, although it could have been a misplacement on the Ordnance Survey map of NRNS 503552 & 503553. J.J. Hall, Trysor, 29 September 2009

HER PRN: CPAT 53024**Relationships:****Photographs:**

Visited on: Field Observation 11-Sep-2009 TR JJH

NPRN: 503505

CERRIGLLWYDION, RAIN GAUGE

RAIN GAUGE

NGR: SN8434469223 Grid reference taken at centre of site **Altitude:** 535
Period: Modern **Broadclass:** Education
Form: Other Structure **Condition:** C

Site Status:

Description: A rain gauge shown on modern Ordnance Survey mapping. The rain gauge pot sits within in a small, square enclosure defined by a post and wire fence measuring 4m by 4m with no entrance into it. The general vegetation in the locality in July 2009 was purple moor grass. J.J. Hall, Trysor, 29 July 2009

HER PRN:**Relationships:**

Part of 503516

Photographs:

ELNC2009_018 14/07/2009 Rain gauge enclosure, looking northwest.

Visited on: Field Observation 14-Jul-2009 TR JJH**NPRN: 503506**

CERRIGLLWYDION, BUILDING

BUILDING

NGR: SN8417369196 Grid reference taken at centre of site **Altitude:** 524
Period: Modern **Broadclass:** Unassigned
Form: Building **Condition:** A

Site Status:

Description: This building is only shown on modern Ordnance Survey mapping but according to a local informant was built at the beginning of the 20th century by local fishermen. It sits on a level area cut into the north northwest slope and revetted by a rough stone wall. The building now consists of a mortared stone base, on which stands a corrugated iron building, painted green. It measures 15m east northeast to west southwest by 5m. The gable at the east northeast end carries a chimney. Beyond the opposite gable, at the west southwest end, is a raised area, defined by stone. This may be the footings of an earlier phase of the building or a bit of landscaping. The building was still in use in 2009. J.J. Hall, Trysor, 29 July 2009

HER PRN:**Relationships:**

Associated with 503586

Part of 503516

Photographs:

ELNC2009_024 14/07/2009 Building, looking northeast.

ELNC2009_025 14/07/2009 Building, looking east northeast.

ELNC2009_026 14/07/2009 Building, looking southeast.

ELNC2009_027 14/07/2009 Building, looking southwest,

with shed NPRN 503586 on the

left hand side of the photograph.

Visited on: Field Observation 14-Jul-2009 TR JJH

NPRN: 503507

CERRIGLLWYDION, DAM

DAM

NGR: SN8447069970 Grid reference taken at centre of site **Altitude:** 496
Period: Post Medieval **Broadclass:** Water Supply and Drainage
Form: Other Structure **Condition:** B

Site Status:

Description: A dam on the eastern side of Llyn Cerrigllwydion Isaf controlling water into leat NPRN 261660. The drystone dam was placed across the point where the Nant Cerrigyrhelyg exits Llyn Cerrigllwydion Isaf. It consists of stone laid up to a height of 0.50m above the ground surface. The southern section is approximately 35m south southeast to north northwest, then at the northern end it runs to the north northeast for a further 10m. It is at least 3m wide, but was partially obscured by vegetation in October 2009. Water trickles through it to the stream, but it no longer supplies water to the leat. It was built to raise or maintain the water level of the lake so that sufficient water was available for leat NPRN 261660. It presumably dates to 1876 when the leat was constructed by the New Cwm Elan mine company, according to David Bick in his 1991 book *The Old Metal Mines of mid-Wales, Part 6 A Miscellany*, page 21. J.J. Hall, Trysor, 29 May 2009

HER PRN:

Relationships:

Associated with 503594
 Part of 503516
 Associated with 261660

Photographs:

ELNC2009_032 13/10/2009 Northern section of dam, looking southwest.
 ELNC2009_033 13/10/2009 Southern section of dam, looking south southeast.
 ELNC2009_034 13/10/2009 Southern section of dam, looking southeast.
 ELNC2009_035 13/10/2009 Dam, looking north northeast.

Visited on: Field Observation 13-Oct-2009 TR JJH

NPRN: 503508

MONKS WAY: CARN RICET TO RHYD

TRACKWAY

HENGAE

NGR: SN8543169545 Grid reference taken at point along linear site**Altitude:** 502**Period:** Post Medieval **Broadclass:** Transport**Form:** Earthwork **Condition:** V**Site Status:****Description:**

This section of the trackway or road, NPRN 23712, runs from Rhyd Hengae at SN8239368206, to Carn Ricet at SN8715370924, a distance of 6km. It is shown on the 1833 1" to 1 mile Ordnance Survey map as a road/track. On the 1st edition Ordnance Survey map of 1891 it is shown as track in use and labelled "Ancient Road". The trackway today follows the same line as shown on both these maps and is now called the Monks Way or the Monks Trod.

At Rhyd Hengae, SN8239368206, where it fords the Afon Claerwen, the track is quite broad and ill-defined with animal trampling. As it runs diagonally up the west-facing slope of Llethr Ffos To, it is a terraced path up to 4m wide but when it reaches the steeper section at SN8281768493 it narrows down to a footpath no more than 1m wide, suffering heavily from erosion. Reaching the top of the steeper slope at SN8297768546, it becomes a grass-covered, shallow "hollow way", up to 4m wide at base. At SN8315068577, an informal modern vehicle track approaching from the south joins the trackway giving access to NPRN 503506. From SN8317968612 the trackway is terraced rather than a hollow way, with some erosion occurring from vehicle use. Going down the slope the erosion increases as the surface water increases. The modern track diverges to the south of the trackway, presumably to avoid the rutted areas. At SN8327468775, the trackway is revetted on its southern side by rough, coursed stonework. The dating of this is uncertain but as this part of the trackway has been used for vehicular access to NPRN 503506 since the early 20th century it may relate to that. East of this the ground becomes wetter, with standing or running water on the trackway until it starts to climb again at SN8363268778. The boulder clay is much thinner here and the trackway braids across a rocky surface. Once the trackway reaches the flatter ground at Blaen Rhestr the trackway continues as a track with one set of wheel ruts, up to a short track created by vehicles driving to NPRN 503508. This track has been created by erosion of the overlying peat and the same natural boulder clay/stone can be seen exposed as is seen in the trackway. The trackway now continues along the broad ridge of Clawdd Du Mawr and Clawdd Du Bach to Carn Ricet. The trackway is sometimes indistinct neither a hollow way nor terraced. As it approaches Carn Ricet it becomes more of a hollow way, often water-logged. Beyond Carn Ricet, the trackway has been given NPRN 261236.

Andrew Fleming stated in 2009, *The Making of a Medieval Road, Landscapes, Vol 10, Number 1, pages 77-100*, that the much of this section of the trackway had been metalled. However, the wider scope of Upland Survey project in 2009, suggested that stone thought to be metalling was probably material within the boulder clay, seen clearly in many exposures throughout the area. The stone revetting of the trackway was only seen on the section of track used since the early 20th century for access to NPRN 503506. This use included bringing all the materials to build NPRN 503506, so it is possible that the stone revetting was to strengthen the trackway for this. J.J. Hall, Trysor, 31 January 2010

HER PRN:**Relationships:****Photographs:**

Uplands Initiative - Elenydd (Central)

Part of	23712	ELNC2009_118	14/10/2009	Trackway at SN8281368489, showing erosion and natural debris looking east.
		ELNC2009_119	14/10/2009	Trackway at SN8297168543, grass-covered, looking east northeast.
		ELNC2009_120	14/10/2009	Trackway at SN8299168548, grass-covered, looking east northeast.
		ELNC2009_121	14/10/2009	Trackway at SN8315068577, in use as access track to NPRN 503506, looking northeast.
		ELNC2009_122	14/10/2009	Trackway at SN8327468775, stone revetment on southern side of track, looking northeast.
		ELNC2009_123	14/10/2009	Trackway at SN8336768824, ford across small stream, looking northeast.
		ELNC2009_124	14/10/2009	Trackway at SN8363268778, looking southwest.
		ELNC2009_125	14/07/2009	Trackway at SN8405668982, looking northeast.
		ELNC2009_126	14/07/2009	Trackway at SN8477669176, looking southeast. The quantity of surface water visible is due to a recent downpour.
		ELNC2009_127	14/07/2009	Trackway at SN8517569324, looking northeast.
		ELNC2009_128	14/07/2009	Trackway at SN8541369527, looking northeast.
		ELNC2009_129	30/09/2009	Trackway at SN8624970305, looking southwest.
		ELNC2009_130	12/10/2009	Trackway at SN8701270798, looking northeast.
		ELNC2009_131	12/10/2009	Trackway at SN8715070908, looking southwest.
Visited on:	Field Observation	12-Oct-2009	TR	JJH

NPRN: 503509

GLANHIRIN, FIELD SYSTEM

FIELD SYSTEM

NGR: SN8665071745 Grid reference taken at a central point within extensive site **Altitude:** 402
Period: Post Medieval **Broadclass:** Agriculture and Subsistence
Form: Complex **Condition:** V

Site Status:

Description: Glanhirin is shown on the 1833 1 inch to 1 mile Ordnance Survey map as a building and a long straight rectangular parcel of land to the east and a field beyond. On the Llansanffraid Cwmteuddwr tithe map of 1841 it is shown as two fields, Bryn Bychan and Bryn Llwyd, with the building external to Bryn Llwyd. By the time of the 1st edition map of 1891, the two fields have been subsumed into a larger, more rectilinear field system, closer to the field system in existence today. The fields are in 2009 are defined by post and wire fencing and still in use. J.J. Hall, Trysor, 31 January 2010

HER PRN:**Relationships:**

Part of 22670

Photographs:

ELNC2009_132 12/10/2009 Field system at Glanhirin, looking north.

Visited on: Field Observation 13-Oct-2009 TR JHH

NPRN: 503510

CLAERWEN, FOOTBRIDGE

FOOTBRIDGE

NGR: SN8209067800 Grid reference taken at centre of site **Altitude:** 391
Period: Post Medieval **Broadclass:** Transport
Form: Documents **Condition:** U

Site Status:

Description: A footbridge over the Afon Claerwen shown on 2nd edition 1:10560 Ordnance Survey map of 1905. There was no trace of the footbridge when the area was visited in September 2009. J.J. Hall, Trysor, 29 September 2009

HER PRN:**Relationships:****Photographs:**

Visited on: Field Observation 11-Sep-2009 TR JHH

NPRN: 503511

CLAERWEN, WELL

WELL

NGR: SN8214467263 Grid reference taken at centre of site **Altitude:** 395
Period: Post Medieval?;Modern? **Broadclass:** Water Supply and Drainage
Form: Documents **Condition:** U

Site Status:

Description: A water source shown on 2nd edition 1:10560 Ordnance Survey mapping of 1905 as a "Spring" and on modern Ordnance Survey mapping as a "Well". It was not seen during Uplands Survey in 2009. J.J. Hall, Trysor, 29 September 2009

HER PRN:**Relationships:**

Associated with 503516

Photographs:**Visited on:**

NPRN: 503512

CLAERWEN, RAIN GAUGE II

RAIN GAUGE

NGR: SN8202867327 Grid reference taken at centre of site**Altitude:** 386**Period:** Modern? **Broadclass:** Education**Form:** Documents **Condition:** U**Site Status:**

Description: A rain gauge shown on modern Ordnance Survey mapping. A rain gauge was not seen at this point during Uplands Survey in 2009. There was a rain gauge, NPRN 503551, 115m to the north northwest. J.J. Hall, Trysor, 29 September 2009

HER PRN:**Relationships:****Photographs:**

Visited on: Field Observation 11-Sep-2009 TR JJH

NPRN: 503513

CLAERWEN, BUILDING

BUILDING

NGR: SN8212267237 Grid reference taken at centre of site**Altitude:** 388**Period:** Post Medieval? **Broadclass:** Unassigned**Form:** Documents **Condition:** U**Site Status:**

Description: A square building shown on the 2nd edition 1:10560 Ordnance Survey mapping of 1905 and also on the 1953 edition. However, the building is not shown on the 1st edition 1:10560 Ordnance Survey map of 1891. When visited in 2009, there was no trace of the building on the ground. J.J. Hall, Trysor, 29 September 2009

HER PRN:**Relationships:****Photographs:**

Part of 503516

Visited on: Field Observation 11-Sep-2009 TR JJH

NPRN: 503514

FUCHES, SHEEP FOLD

SHEEP FOLD

NGR: SN8608068480 Grid reference taken at centre of site**Altitude:** 422**Period:** Post Medieval **Broadclass:** Agriculture and Subsistence**Form:** Other Structure **Condition:** C**Site Status:**

Description: A rectangular sheep fold shown on the 1st edition 1:10560 Ordnance Survey map of 1891 and labelled as "Sheepfold". It is also shown on the 2nd edition 1:10560 Ordnance Survey map of 1905. The ruinous, drystone structure measures approximately 12m northwest to southeast by 7m. Vegetation cover in July 2009 was grass and purple moor grass. J.J. Hall, Trysor, 29 July 2009

HER PRN:**Relationships:****Photographs:**

ELNC2009_133 15/07/2009 Sheep fold, looking north.

Visited on: Field Observation 14-Jul-2009 TR JJH

NPRN: 503515

NANT GARW, STONE PILLAR

MARKER CAIRN

NGR: SN8592672986 Grid reference taken at centre of site

Altitude: 387

Period: Modern? **Broadclass:** Unassigned

Form: Other Structure **Condition:** B

Site Status:

Description: A drystone built pillar built on the remains of the westernmost wall of building NPRN 503502. The pillar measured 0.70m in diameter and up to 1m high. A similar pillar stood on the opposite bank of the Nant Garw. J.J. Hall, Trysor, 2 December 2009

HER PRN:

Relationships:

Photographs:

ELNC2009_091 14/06/2009 Stone pillar, looking northwest, with a similar pillar in the background on the other side of the river.

Visited on: Field Observation 14-Jun-2009 TR JJH

NPRN: 503516

CLAERWEN, FARMSTEAD

FARMSTEAD

NGR: SN8205367285 Grid reference taken at centre of site**Altitude:** 393**Period:** Post Medieval**Broadclass:** Agriculture and Subsistence**Form:** Complex**Condition:** A**Site Status:****Description:**

The earliest reference to Claerwen refers to it as a "new cottage", built by Howell Powell of Nantgwyllt c.1674 (Banks, 1880, 48). The farmstead is shown on the 1831 1" to 1 mile survey. At least one building is depicted but no fields. On the 1st edition 1:10560 Ordnance Survey map of 1891, the farmstead consisted of three buildings, one of which was farmhouse NPRN 503602, along with a large field between the buildings and the Afon Claerwen and some small enclosures around the buildings. By the 2nd edition of 1905, an extra field had been added and a building to the south of the others. In 2009, the farmstead was occupied and still in use.

Source: Banks, R.W., 1880. 'The Grange of Cwmtoyddwr', Archaeologia Cambrensis, 4th series XI, p.48.

J.J. Hall, Trysor, 2 December 2009

HER PRN: CPAT 53022**Relationships:**

Consists of 30561
 Associated with 503511
 Consists of 503513
 Consists of 503517
 Consists of 503505
 Consists of 503507
 Consists of 503506
 Consists of 503602
 Associated with 503589
 Associated with 503588
 Consists of 503602
 Consists of 503603
 Consists of 503516
 Consists of 503605
 Consists of 503606

Photographs:

ELNC2009_134 11/09/2009 Farmstead at Claerwen, looking east.

Visited on: Field Observation 11-Sep-2009 TR JJH

NPRN: 503517

CLAERWEN, FIELD SYSTEM

FIELD SYSTEM

NGR: SN8206667389 Grid reference taken at a central point within extensive site**Altitude:** 393**Period:** Post Medieval**Broadclass:** Agriculture and Subsistence**Form:** Complex**Condition:** V**Site Status:****Description:**

The earlier field system at Claerwen, shown on the 1st and 2nd edition 1:10560 Ordnance Survey maps of 1891 and 1905, was defined by earth banks. These can still be seen on the ground in 2009 but the fields had altered in shape and size and were defined by post and wire fencing. J.J. Hall, Trysor, 3 December 2009

HER PRN: CPAT 53023**Relationships:**

Part of 503516

Photographs:

Visited on: Field Observation 11-Sep-2009 TR JJH

NPRN: 503518

GLANHIRIN, QUARRY I

QUARRY

NGR: SN8679972122 Grid reference taken at centre of site**Altitude:** 414**Period:** Modern? **Broadclass:** Industrial**Form:** Earthwork **Condition:** B**Site Status:**

Description: A modern quarry lying within a northeastern extension of the Glanhirin field system. The quarry is cut into a southeast-facing slope and measured 50m northeast to southwest by 16m. Short sections of terraced trackway, NPRN 503593, connected it at both ends to the modern Glanhirin access track but it was not clear if this was a former trackway cut by the quarry or if it was created to access the quarry. Vegetation cover in the quarry was grass and reeds. J.J. Hall, Trysor, 6 December 2009

HER PRN:**Relationships:**

Associated with 503593

Photographs:

ELNC2009_023 18/06/2009 Quarry, looking southwest.

Visited on: Field Observation 18-Jun-2009 TR JJH**NPRN: 503519**

NANT GARW, SUNKEN SHELTER

SUNKEN SHELTER

NGR: SN8577973000 Grid reference taken at centre of site**Altitude:** 390**Period:** Medieval?;Post Medieval? **Broadclass:** Monument <By Form>**Form:** Earthwork **Condition:** C**Site Status:**

Description: A linear hollow excavated at right angles into the northern slope of a bedrock ridge. It measures at least 5m north to south by 2.3m wide and up to 0.75m deep at its southern end. Although the feature is now turf-covered, tumbled stone could be felt in the base of it. It was thought that it was a sunken shelter. J.J. Hall, Trysor, 1 December 2009

HER PRN:**Relationships:****Photographs:**

ELNC2009_092 14/06/2009 Shelter, looking west.

ELNC2009_093 14/06/2009 Shelter, looking north.

Visited on: Field Observation 14-Jun-2009 TR JJH**NPRN: 503520**

AFON GWNGU, STRUCTURE

SHELTER?

NGR: SN8484272602 Grid reference taken at centre of site**Altitude:** 419**Period:** Medieval?;Post Medieval? **Broadclass:** Monument <By Form>**Form:** Earthwork **Condition:** C**Site Status:**

Description: A small hollow filled with stones measuring 1.5m by 1m. The feature was overgrown by grass and reeds in June 2009 so the exact nature of the feature could not be ascertained but it was thought it could be the remains of a small shelter. J.J. Hall, Trysor, 1 December 2009

HER PRN:**Relationships:****Photographs:**

ELNC2009_094 14/06/2009 Possible shelter, looking west.

Visited on: Field Observation 14-Jun-2009 TR JJH

NPRN: 503521

NANT BRYN YR IEIR, STRUCTURE

COTTAGE?

NGR: SN8465172535 Grid reference taken at centre of site

Altitude: 427

Period: Post Medieval **Broadclass:** Domestic

Form: Ruin **Condition:** D

Site Status:

Description: The remains of a rectilinear drystone structure on the northwestern bank of the Nant Bryn yr Ieir. It is not shown on the 1833 1" to 1 mile map, nor on the 1st and 2nd edition 1:10560 Ordnance Survey maps of 1891 and 1905. However, according to Winchester and Straughton, 2008, a cottage is mentioned as having been built in 1811 at Brynyair in the 1722-1817 Manor of Grange Cwmtoyddwr presentments book. This structure and NPRN 503522 may be the remains of this cottage and ancillary structures as no other settlement site were found at Bryn yr Ieir during Uplands Survey in 2009.

The original nature of this structure was not clear as the southern end had been eroded away by the stream. What remained was a length of well-built roughly coursed wall, 1m wide and 0.75m high. This ran east southeast to west northwest for just over 5m. At its eastern end a separate wall ran at right angles to it towards the stream. There was a gap of 0.70m between the two and the second wall was more ruinous. At the western end of the first wall was the rubble remains of another wall again running at right angles towards the stream. Further rubble lay around about.

Winchester, A and Straughton, E, 2008, Elan and Claerwen Valleys, Powys: Historical Briefing Paper

R/D/LEW/3/96 Manor of Grange Cwmtoyddwr presentments book 1722-1817

J.J. Hall, Trysor, 1 December 2009

HER PRN:

Relationships:

Associated with 503522

Associated with 503523

Photographs:

ELNC2009_005 14/06/2009 Remains of structure, looking north northeast.

ELNC2009_006 14/06/2009 Remains of structure, looking east southeast.

ELNC2009_007 14/06/2009 Remains of structure on the right of the photograph with NPRN 503522 on the left, looking northeast.

Visited on: Field Observation

14-Jun-2009

TR

JJH

NPRN: 503522

NANT BRYN YR IEIR, WALL

WALL

NGR: SN8462972540 Grid reference taken at centre of site**Altitude:** 429**Period:** Post Medieval?**Broadclass:** Monument <By Form>**Form:** Ruin**Condition:** D**Site Status:**

Description: A piece of right-angled, drystone walling on the northern edge of the Nant Bryn yr Ieir. The walling ran for 6.75m east southeast to west northwest turning to run for a further 4m towards the stream, which has eroded away any other elements. This structure and NPRN 503521 may be the remains of settlement site mentioned in the 1722-1817 Manor of Grange Cwmtoyddwr presentments book J.J. Hall, Trysor, 1 December 2009

HER PRN:**Relationships:**

Associated with 503521

Associated with 503523

Photographs:

ELNC2009_008 14/06/2009 Wall, looking east northeast.

ELNC2009_009 14/06/2009 Remains of wall on the left of the photograph with NPRN 503521 on the right, looking northeast.

Visited on: Field Observation

14-Jun-2009

TR

JJH

NPRN: 503523

NANT BRYN YR IEIR, BANK

BANK (EARTHWORK)

NGR: SN8467372541 Grid reference taken at centre of site**Altitude:** 426**Period:** Post Medieval**Broadclass:** Monument <By Form>**Form:** Earthwork**Condition:** C**Site Status:**

Description: An earthwork bank, 1.25m wide and up to 0.60m high on a flat terrace on the northwest side of the Nant Bryn yr Ieir. It was traced for approximately 13m northwest to southeast, but reeds obscured the rest of the area, so more of it may exist. It was probably connected with NPRNs 503521 and 503522 that lie 20m to the west which may be the remains of settlement site mentioned in the 1722-1817 Manor of Grange Cwmtoyddwr presentments book. J.J. Hall, Trysor, 1 December 2009

HER PRN:**Relationships:**

Associated with 503521

Associated with 503522

Photographs:**Visited on:** Field Observation

14-Jun-2009

TR

JJH

NPRN: 503524

NANT BLOEDDIAS, MARKER CAIRN

MARKER CAIRN

NGR: SN8474272146 Grid reference taken at centre of site **Altitude:** 448**Period:** Modern **Broadclass:** Unassigned**Form:** Other Structure **Condition:** B**Site Status:****Description:** A small, stone, marker cairn on the northwestern bank of the Nant Bloeddiast. The cairn was 0.8m by 1m and 0.5m high. J.J. Hall, Trysor, 1 December 2009**HER PRN:****Relationships:****Photographs:**

ELNC2009_010 14/06/2009 Marker cairn, looking south southwest.

Visited on: Field Observation 14-Jun-2009 TR JJH**NPRN:** 503525

BRYN MAWR, CAIRN II

RING CAIRN?

NGR: SN8558171747 Grid reference taken at centre of site **Altitude:** 501**Period:** Bronze Age? **Broadclass:** Religious Ritual and Funerary**Form:** Other Structure **Condition:** C**Site Status:****Description:** A turf-covered, stone spread on a gentle south-facing slope. Partially obscured by grass and reeds, it appeared to be an oval ring bank of stone, with some further stone in the centre. It measured approximately 4m north northwest to south southeast by 3m. J.J. Hall, Trysor, 2 December 2009**HER PRN:****Relationships:****Photographs:**ELNC2009_095 18/06/2009 Possible cairn, looking east.
ELNC2009_096 18/06/2009 Possible cairn, looking north northwest.**Visited on:** Field Observation 18-Jun-2009 TR JJH**NPRN:** 503526

BRYN MAWR, CAIRN I

CAIRN

NGR: SN8552171553 Grid reference taken at centre of site **Altitude:** 478**Period:** Bronze Age **Broadclass:** Religious Ritual and Funerary**Form:** Other Structure **Condition:** C**Site Status:****Description:** A low stone cairn on an area of low outcropping rock ridge. The northeast side of the cairn was built up against the outcropping rock, the southwestern edge was clearly defined. The cairn measured 6m northwest to southeast by at least 4m, and stood up to a height of 0.15m. J.J. Hall, Trysor, 2 December 2009**HER PRN:****Relationships:****Photographs:**

ELNC2009_097 18/06/2009 Cairn, looking southwest.

Visited on: Field Observation 18-Jun-2009 TR JJH

NPRN: 503527

CORMWG, SHEEP DIP

SHEEP DIP

NGR: SN8475670009 Grid reference taken at centre of site**Altitude:** 482**Period:** Modern**Broadclass:** Agriculture and Subsistence**Form:** Other Structure**Condition:** D**Site Status:****Description:**

A concrete, sunken sheep dip formerly within a corrugated iron shed, now collapsed. Measurements were not taken during field survey due to the precarious nature of the structure. Adjoining the sheep dip to the west was a sheep fold, NPRN 503503. The sheep dip was fed by an unnamed tributary of the Nant Cerrigyrehelyg and is similar to NPRN 261810 at Cae Blaenmethan. According to Erwyd Howells in his 2005 book "Good Men and True", p.10, the Cormwg sheep dip was built as a communal dipping place by the Birmingham Corporation in 1915 serving the farmsteads of Claerwen, Hengae, Abergwngu, Glanhirin, Lluest Aber Caethion, Aberglanhirin and Hirnant. J.J. Hall, Trysor, 3 December 2009

HER PRN:**Relationships:**

Associated with 503503

Photographs:

ELNC2009_070	14/10/2009	Sheep dip with fold NPRN 5030503 beyond, looking northwest.
--------------	------------	---

ELNC2009_071	14/10/2009	Sheep dip, looking north.
--------------	------------	---------------------------

ELNC2009_072	14/10/2009	Sheep dip, looking north.
--------------	------------	---------------------------

Visited on: Field Observation

14-Oct-2009

TR

JJH

NPRN: 503528

GLANHIRIN, TRACKWAY IV

TRACKWAY

NGR: SN8687671281 Grid reference taken at point along linear site**Altitude:** 397**Period:** Post Medieval**Broadclass:** Transport**Form:** Earthwork**Condition:** C**Site Status:****Description:**

This earthwork trackway is the former access to Glanhirin before trackway NPRN 502704 was built in the 20th century. The trackway ran from the farmstead at Glanhirin at SN8650371674, south to the Nant Hirin, which it is shown as fording on the 19th century maps, and then diagonally up the slope of Esgair Rhiwlan to SN8769671127 where it joined trackway NPRN 261236. It is now completely grassed-over and where it runs across the top of Esgair Rhiwlan it is indistinct. J.J. Hall, Trysor, 24 January 2010

HER PRN: CPAT 86256**Relationships:**

Associated with 503595

Photographs:

ELNC2009_103	13/10/2009	Former trackway, running diagonally up the slope, looking southeast.
--------------	------------	--

Visited on: Field Observation

14-Oct-2009

TR

JJH

NPRN: 503529

ESGAIR CYWION, ENCLOSURE I

EXPERIMENTAL PLOT

NGR: SN8822970360 Grid reference taken at centre of site **Altitude:** 454
Period: Modern **Broadclass:** Education
Form: Other Structure **Condition:** B

Site Status:

Description: A small, square enclosure defined by a post and wire fence with a wooden rail around the top. It measured 4m by 4m with no entrance into it. The southern side of the enclosure was beginning to collapse inwards. The general vegetation in the locality in July 2009 was purple moor grass. The Elan Trust informed Trysor that enclosures such as this were part of an ongoing study to assess vegetation changes when stock are totally removed. J.J. Hall, Trysor, 22 December 2009

HER PRN:**Relationships:**

Associated with 503530
 Associated with 503531
 Associated with 503538

Photographs:

Visited on: Field Observation 12-Jul-2009 TR JJH

NPRN: 503530

ESGAIR CYWION, ENCLOSURE II

EXPERIMENTAL PLOT

NGR: SN8829470356 Grid reference taken at centre of site **Altitude:** 450
Period: Modern **Broadclass:** Education
Form: Other Structure **Condition:** B

Site Status:

Description: A small, square enclosure defined by a post and wire fence with a wooden rail around the top. It measured 4m by 4m with no entrance into it. The general vegetation in the locality in July 2009 was purple moor grass. The Elan Trust informed Trysor that enclosures such as this were part of an ongoing study to assess vegetation changes when stock are totally removed. J.J. Hall, Trysor, 22 December 2009

HER PRN:**Relationships:**

Associated with 503529
 Associated with 503531
 Associated with 503538

Photographs:

Visited on: Field Observation 12-Jul-2009 TR JJH

NPRN: 503531

ESGAIR CYWION, ENCLOSURE IV

EXPERIMENTAL PLOT

NGR: SN8833770338 Grid reference taken at centre of site**Altitude:** 449**Period:** Modern **Broadclass:** Education**Form:** Other Structure **Condition:** A**Site Status:**

Description: A small, square enclosure defined by a post and wire fence with a wooden rail around the top. It measured 4m by 4m with no entrance into it. The southern side of the enclosure had collapsed inwards. The general vegetation in the locality in July 2009 was purple moor grass. The Elan Trust informed Trysor that enclosures such as this were part of an ongoing study to assess vegetation changes when stock are totally removed. J.J. Hall, Trysor, 22 December 2009

HER PRN:**Relationships:**

Associated with 503529

Associated with 503530

Associated with 503538

Photographs:**Visited on:** Field Observation 12-Jul-2009 TR JJH**NPRN: 503532**

GLANHIRIN, FARMHOUSE

FARMHOUSE

NGR: SN8650771663 Grid reference taken at centre of site**Altitude:** 404**Period:** Post Medieval?;Modern? **Broadclass:** Domestic**Form:** Building **Condition:** A**Site Status:**

Description: The farmhouse at Glanhirin is a stone-built two storeyed house with an additional, well-built lean-to. It is not clear whether it is the building shown on the 1833 1 inch to 1 mile Ordnance Survey or the Llansanffraid Cwmteuddwr parish tithe map of 1841, but it would appear to be of 19th century or early 20th century construction. J.J. Hall, Trysor, 23 December 2009

HER PRN:**Relationships:**

Part of 22670

Photographs:**Visited on:** Field Observation 14-Oct-2009 TR JJH**NPRN: 503533**

ESGAIR CRAWNLLWYN, PEAT CUTTING I

PEAT CUTTING

NGR: SN8800069600 Grid reference taken at centre of site**Altitude:** 472**Period:** Post Medieval **Broadclass:** Industrial**Form:** Earthwork **Condition:** C**Site Status:**

Description: A linear peat working measuring 200m northeast to southwest by 20m. Vegetation cover in the locality in July 2009 was grass. J.J. Hall, Trysor, 21 January 2010

HER PRN:**Relationships:****Photographs:****Visited on:** Field Observation 12-Jul-2009 TR JJH

NPRN: 503534

GLANHIRIN, QUARRY II

QUARRY

NGR: SN8620571553 Grid reference taken at centre of site **Altitude:** 451**Period:** Modern **Broadclass:** Industrial**Form:** Earthwork **Condition:** B**Site Status:****Description:** A linear quarry connected to trackway NPRN 503608 by a short track, 30m long. The quarry itself measured at least 40m northeast to southwest by 12m. It probably provided metalling for trackway NPRN 503568. J.J. Hall, Trysor, 2 December 2009**HER PRN:****Relationships:**

Associated with 503608

Photographs:

ELNC2009_011 19/06/2009 Quarry, looking northeast.

Visited on: Field Observation 19-Jun-2009 TR JJH**NPRN: 503535**

WAUN FFAETHNANT, RAIN GAUGE I

RAIN GAUGE?

NGR: SN8268971151 Grid reference taken at centre of site **Altitude:** 508**Period:** Modern **Broadclass:** Education**Form:** Other Structure **Condition:** D**Site Status:****Description:** Two upright, decaying, wooden posts 4m apart, with other posts lying on the ground. It seems likely that this is the remains of a square enclosure around a rain gauge, similar to NRPN 503535 approximately 220m to the north. The vegetation in the locality in June 2009 was purple moor grass. J.J. Hall, Trysor, 2 December 2009**HER PRN:****Relationships:****Photographs:**

ELNC2009_004 19/06/2009 Remains of rain gauge, looking south.

Visited on: Field Observation 19-Jun-2009 TR JJH**NPRN: 503537**

ESGAIR CRAWNLLWYN, PEAT CUTTING II

PEAT CUTTING

NGR: SN8712670238 Grid reference taken at centre of site **Altitude:** 479**Period:** Post Medieval **Broadclass:** Industrial**Form:** Earthwork **Condition:** C**Site Status:****Description:** A sub-rectilinear peat cutting measuring 25m southwest to northeast by 15m and up to 0.5m deep. The vegetation in the locality in July 2009 was purple moor grass. J.J. Hall, Trysor, 2 December 2009**HER PRN:****Relationships:****Photographs:****Visited on:** Field Observation 12-Jul-2009 TR JJH

NPRN: 503538

ESGAIR CYWION, ENCLOSURE III

EXPERIMENTAL PLOT

NGR: SN8819570382 Grid reference taken at centre of site **Altitude:** 455
Period: Modern **Broadclass:** Education
Form: Other Structure **Condition:** C

Site Status:

Description: A small, square enclosure defined by a post and wire fence with a wooden rail around the top. It measured 4m by 4m with no entrance into it. The southern side of the enclosure had collapsed inwards. The general vegetation in the locality in July 2009 was purple moor grass. The Elan Trust informed Trysor that enclosures such as this were part of an ongoing study to assess vegetation changes when stock are totally removed. J.J. Hall, Trysor, 2 December 2009

HER PRN:

Relationships:

Associated with 503529
 Associated with 503530
 Associated with 503531

Photographs:

Visited on: Field Observation 12-Jul-2009 TR JJH

NPRN: 503539

ESGAIR CYWION, FIRING RANGE

FIRING RANGE

NGR: SN8809870512 Grid reference taken at a central point within extensive site **Altitude:** 464
Period: Modern **Broadclass:** Defence
Form: Earthwork **Condition:** V

Site Status:

Description: Small earth mounds, between 2m and 4m in diameter and up to 0.75m high, are scattered across a large part of Esgair Crawnllwyn. They are to be found in an area at least 700m northwest to southeast by 200m. Also found in the area was a piece of shrapnel. It is thought that the mounds are the result of military firing activity in the early 20th century, similar to NPRN 502552 on Esgair Rhiwlan to the north. When visited in July 2009 vegetation in the locality was purple moor grass with shorter grass on the mounds. J.J. Hall, Trysor, 22 December 2009

HER PRN:

Relationships:

Associated with 502552

Photographs:

ELNC2009_098 12/07/2009 One of the earth mounds at approximately SN8809870512, looking west.

Visited on: Field Observation 12-Jul-2009 TR JJH

NPRN: 503543

ESGAIR CYWION, POST

SURVEY POINT

NGR: SN8282268124 Grid reference taken at centre of site **Altitude:** 499
Period: Modern **Broadclass:** Education
Form: Other Structure **Condition:** A
Site Status:
Description: A brass marker post consisting of a small horizontal, circular disc on a short pole. It is marked with "Nature Conservancy Council Survey Post B M". J.J. Hall, Trysor, 2 December 2009

HER PRN:**Relationships:****Photographs:**

ELNC2009_012 13/07/2009 Detail of Nature Conservancy Council Survey Post marker.

Visited on: Field Observation 13-Jul-2009 TR JJH**NPRN:** 503544

LLETHR FFOS TO, EARTHWORK

PLATFORM?

NGR: SN8278268690 Grid reference taken at centre of site **Altitude:** 482
Period: Medieval?;Post Medieval? **Broadclass:** Monument <By Form>
Form: Earthwork **Condition:** C
Site Status:
Description: A possible earthwork platform cut into the west-facing slope. It measures 10m north to south by 5m, and was covered with reeds and grass in 2009. Although it looked like a cut platform it is possible that it is natural slump, and to support this the area downslope to the west of it is now wet. J.J. Hall, Trysor, 2 December 2009

HER PRN:**Relationships:****Photographs:**

ELNC2009_099 13/07/2009 Possible platform, looking northwest.

Visited on: Field Observation 13-Jul-2009 TR JJH**NPRN:** 503545

CERRIGLLWYDION, ENCLOSURE II

EXPERIMENTAL PLOT

NGR: SN8352869088 Grid reference taken at centre of site **Altitude:** 534
Period: Modern **Broadclass:** Education
Form: Other Structure **Condition:** A
Site Status:
Description: A square enclosure defined by a post and wire fence. It measured 9m by 9m with no entrance into it. The general vegetation in the locality in July 2009 was purple moor grass. The Elan Trust informed Trysor that enclosures such as this were part of an ongoing study to assess vegetation changes when stock are totally removed. J.J. Hall, Trysor, 2 December 2009

HER PRN:**Relationships:****Photographs:**

ELNC2009_017 13/07/2009 Experimental plot, looking south.

Visited on: Field Observation 13-Jul-2009 TR JJH

NPRN: 503546

CERRIGLLWYDION, STONE PILE

CAIRN?

NGR: SN8359068924 Grid reference taken at centre of site**Altitude:** 518**Period:** Unknown**Broadclass:** Religious Ritual and Funerary**Form:** Earthwork**Condition:** C**Site Status:**

Description: A square, stone spread lying within the rocky outcrops to the west of Llyn Cerrigllwydion Uchaf. The feature measured 1.2m across with the centre of it relatively clear of stone. J.J. Hall, Trysor, 2 December 2009

HER PRN:**Relationships:****Photographs:**

ELNC2009_013 13/07/2009 Stone setting, looking

Visited on: Field Observation

13-Jul-2009

TR

JJH

NPRN: 503547

CERRIGLLWYDION, PEAT CUTTING

PEAT CUTTING

NGR: SN8421269170 Grid reference taken at centre of site**Altitude:** 526**Period:** Modern**Broadclass:** Industrial**Form:** Earthwork**Condition:** A**Site Status:**

Description: A small area used for cutting peat in the 20th century. J.J. Hall, Trysor, 2 December 2009

HER PRN:**Relationships:****Photographs:****Visited on:****NPRN:** 503548

CERRIGLLWYDION, ENCLOSURE I

EXPERIMENTAL PLOT

NGR: SN8390468844 Grid reference taken at centre of site**Altitude:** 540**Period:** Modern**Broadclass:** Education**Form:** Other Structure**Condition:** A**Site Status:**

Description: A square enclosure defined by a post and wire fence. It measured 7m by 7m with no entrance into it. The general vegetation in the locality in July 2009 was purple moor grass. The Elan Trust informed Trysor that enclosures such as this were part of an ongoing study to assess vegetation changes when stock are totally removed. J.J. Hall, Trysor, 2 December 2009

HER PRN:**Relationships:****Photographs:**

ELNC2009_016 14/07/2009 Experimental plot, looking south.

Visited on: Field Observation

14-Jul-2009

TR

JJH

NPRN: 503549

BLAEN RHESTR, SHELTER

SHELTER

NGR: SN8441869400 Grid reference taken at centre of site**Altitude:** 546**Period:** Post Medieval?;Modern? **Broadclass:** Monument <By Form>**Form:** Other Structure **Condition:** C**Site Status:****Description:** A small rough shelter created at the northeast end of a linear ridge. It measured 2m in diameter. J.J. Hall, Trysor, 2 December 2009**HER PRN:****Relationships:****Photographs:**

ELNC2009_015 14/07/2009 Shelter, looking southwest.

Visited on: Field Observation 14-Jul-2009 TR JJH**NPRN:** 503550

BLAEN RHESTR, MARKER CAIRN III

MARKER CAIRN

NGR: SN8442869405 Grid reference taken at centre of site**Altitude:** 547**Period:** Post Medieval?;Modern? **Broadclass:** Unassigned**Form:** Other Structure **Condition:** B**Site Status:****Description:** A marker cairn on top of a linear rock outcrop. The cairn measured approximately 1.2m in diameter and 1m high. J.J. Hall, Trysor, 2 December 2009**HER PRN:****Relationships:****Photographs:**

ELNC2009_014 14/07/2009 Marker cairn, looking northeast.

Visited on: Field Observation 14-Jul-2009 TR JJH**NPRN:** 503551

CLAERWEN, RAIN GAUGE I

RAIN GAUGE

NGR: SN8196067421 Grid reference taken at centre of site**Altitude:** 385**Period:** Modern **Broadclass:** Education**Form:** Earthwork **Condition:** C**Site Status:****Description:** A subsquare, grass-covered earthen ring bank on the flood plain on the eastern side of the Afon Claerwen. The bank was 1m wide and 0.3m high and created a circle 5m in diameter. Although a rain gauge is not marked at this point on any of the Ordnance Survey maps, it was thought that this was the remains of a rain gauge, similar to NPRN 502556. J.J. Hall, Trysor, 2 December 2009**HER PRN:****Relationships:****Photographs:**

ELNC2009_019 11/09/2009 Earthwork representing former location of rain gauge, looking northwest.

Visited on: Field Observation 11-Sep-2009 TR JJH

NPRN: 503552

AFON CLAERWEN, LONG HUT

LONG HUT

NGR: SN8234868594 Grid reference taken at centre of site**Altitude:** 429**Period:** Medieval?;Post Medieval? **Broadclass:** Domestic**Form:** Ruin **Condition:** D**Site Status:**

Description: A rough, rectangular, stone structure on the eastern side of the Afon Claerwen. It lay on a natural terrace and was cut into the slope at its eastern end. Overall it measured 6.25m east to west by 3.75m. The lateral walls were broad lines of stone 1m wide and at most 0.20m high. There was a possible internal subdivision with a slight step down to the west. Shelter NPRN 503553 lay 3m to the north of it. J.J. Hall, Trysor, 2 December 2009

HER PRN:**Relationships:**

Associated with 503553

Photographs:

ELNC2009_021 11/09/2009 Structure, looking west.

ELNC2009_022 11/09/2009 Structure, looking south.

Visited on: Field Observation 11-Sep-2009 TR JJH**NPRN:** 503553

AFON CLAERWEN, SHELTER

SHELTER

NGR: SN8234868600 Grid reference taken at centre of site**Altitude:** 429**Period:** Medieval?;Post Medieval? **Broadclass:** Monument <By Form>**Form:** Other Structure **Condition:** D**Site Status:**

Description: A rough shelter constructed of large slabs on the eastern bank of the Afon Claerwen. It used a large natural rock as the east northeast side. It measured 2.5m east southeast by west southwest by 3m, and the walls were only 0.15m high. A long hut, NPRN 503552, lay 3m to the south J.J. Hall, Trysor, 2 December 2009

HER PRN:**Relationships:**

Associated with 503552

Photographs:

ELNC2009_080 11/09/2009 Rough shelter, looking west southwest.

Visited on: Field Observation 11-Sep-2009 TR JJH**NPRN:** 503554

AFON CLAERWEN, ENCLOSURE II

EXPERIMENTAL PLOT

NGR: SN8235068667 Grid reference taken at centre of site**Altitude:** 434**Period:** Modern **Broadclass:** Education**Form:** Other Structure **Condition:** B**Site Status:**

Description: A square enclosure defined by a post and wire fence. It measured 10m by 10m with no entrance into it. The general vegetation in the locality in July 2009 was purple moor grass. The Elan Trust informed Trysor that enclosures such as this were part of an ongoing study to assess vegetation changes when stock are totally removed. J.J. Hall, Trysor, 2 December 2009

HER PRN:**Relationships:****Photographs:****Visited on:** Field Observation 11-Sep-2009 TR JJH

NPRN: 503555

AFON CLAERWEN, LONGHOUSE

LONGHOUSE

NGR: SN8229368863 Grid reference taken at centre of site**Altitude:** 442**Period:** Medieval?;Post Medieval? **Broadclass:** Domestic**Form:** Ruin **Condition:** D**Site Status:**

Description: A two-celled drystone structure on a level terrace on the eastern side of the Afon Claerwen. It was generally of a rough build but in places the walls had edge set stones. Overall it measured 13.2m east southeast to west northwest by 4m. The easternmost cell was the smaller of the two, being 4.5m long, and more rubble-filled. The external walls were 1m wide with the internal division being 0.70m wide. There was an entrance in the west southwest wall of the western cell. To the west of the structure was a small shelter NPRN 503592. J.J. Hall, Trysor, 2 December 2009

HER PRN:**Relationships:**

Associated with 503592

Photographs:

ELNC2009_082	11/09/2009	Long hut, looking northwest, with shelter NPRN 503592 just in front of the longhouse towards the left hand side of the photograph.
ELNC2009_083	11/09/2009	Long hut, looking south.
ELNC2009_084	11/09/2009	Long hut, looking east southeast.
ELNC2009_085	11/09/2009	Long hut, looking west northwest.

Visited on: Field Observation 11-Sep-2009 TR JJH

NPRN: 503556

AFON CLAERWEN, ENCLOSURE I

EXPERIMENTAL PLOT

NGR: SN8245369806 Grid reference taken at centre of site**Altitude:** 479**Period:** Modern **Broadclass:** Education**Form:** Other Structure **Condition:** A**Site Status:**

Description: A square enclosure defined by a post and wire fence. It measured 10m by 10m with no entrance into it. The general vegetation in the locality in September 2009 was purple moor grass. The Elan Trust informed Trysor that enclosures such as this were part of an ongoing study to assess vegetation changes when stock are totally removed. J.J. Hall, Trysor, 2 December 2009

HER PRN:**Relationships:****Photographs:**

ELNC2009_020	11/09/2009	Post and wire enclosure, looking east.
--------------	------------	--

Visited on: Field Observation 11-Sep-2009 TR JJH

NPRN: 503557

GROES BRYN-LLWYD, ENCLOSURE

EXPERIMENTAL PLOT

NGR: SN8224470247 Grid reference taken at centre of site **Altitude:** 498
Period: Modern **Broadclass:** Education
Form: Other Structure **Condition:** A

Site Status:

Description: A square enclosure defined by a post and wire fence. It measured 10m by 10m with no entrance into it. The general vegetation in the locality in September 2009 was heather and purple moor grass. The Elan Trust informed Trysor that enclosures such as this were part of an ongoing study to assess vegetation changes when stock are totally removed. J.J. Hall, Trysor, 2 December 2009

HER PRN:**Relationships:****Photographs:**

ELNC2009_087 11/09/2009 Enclosure, looking northeast.

Visited on: Field Observation 11-Sep-2009 TR JJH

NPRN: 503558

WAUN FIGYN, ENCLOSURE I

EXPERIMENTAL PLOT

NGR: SN8156670592 Grid reference taken at centre of site **Altitude:** 494
Period: Modern **Broadclass:** Education
Form: Other Structure **Condition:** A

Site Status:

Description: A square enclosure defined by a post and wire fence. It measured 10m by 10m with no entrance into it. The general vegetation in the locality in September 2009 was purple moor grass. The Elan Trust informed Trysor that enclosures such as this were part of an ongoing study to assess vegetation changes when stock are totally removed. J.J. Hall, Trysor, 2 December 2009

HER PRN:**Relationships:****Photographs:**

Visited on: Field Observation 11-Sep-2009 TR JJH

NPRN: 503559

WAUN FIGYN, ENCLOSURE II

EXPERIMENTAL PLOT

NGR: SN8168269931 Grid reference taken at centre of site **Altitude:** 488
Period: Modern **Broadclass:** Education
Form: Other Structure **Condition:** A

Site Status:

Description: A square enclosure defined by a post and wire fence. It measured 10m by 10m with no entrance into it. The general vegetation in the locality in September 2009 was purple moor grass. The Elan Trust informed Trysor that enclosures such as this were part of an ongoing study to assess vegetation changes when stock are totally removed. J.J. Hall, Trysor, 2 December 2009

HER PRN:**Relationships:****Photographs:**

ELNC2009_088 11/09/2009 Enclosure, looking east.

Visited on: Field Observation 11-Sep-2009 TR JJH

NPRN: 503560

NANT CORMWG, LONG HUT

LONG HUT

NGR: SN8577070386 Grid reference taken at centre of site**Altitude:** 430**Period:** Medieval?;Post Medieval? **Broadclass:** Domestic**Form:** Ruin **Condition:** D**Site Status:**

Description: A single-celled long hut on a small terrace on the northern side of the Nant Cormwg. The long hut was 6m east to west. The southern side of the long hut has been lost to erosion from the stream but the structure was at least 3.5m wide. The western end was seen as a stone scatter now 1.5m wide, the eastern end wall was 1m wide and the northern wall was 0.80m wide. The whole structure was grassed-over when visited in September 2009. J.J. Hall, Trysor, 2 December 2009

HER PRN:**Relationships:****Photographs:**

ELNC2009_057	30/09/2009	Long hut, looking north northeast.
ELNC2009_058	30/09/2009	Long hut, looking south southeast.
ELNC2009_059	30/09/2009	Long hut, looking south southeast.
ELNC2009_060	30/09/2009	Long hut, looking west.

Visited on: Field Observation 30-Sep-2009 TR JH

NPRN: 503561

DDWYNANT, ENCLOSURE

EXPERIMENTAL PLOT

NGR: SN8275867340 Grid reference taken at centre of site**Altitude:** 412**Period:** Modern **Broadclass:** Education**Form:** Other Structure **Condition:** C**Site Status:**

Description: A square enclosure defined by a post and wire fence. It measured 10m by 10m with no entrance into it. The general vegetation in the locality in October 2009 was purple moor grass. The Elan Trust informed Trysor that enclosures such as this were part of an ongoing study to assess vegetation changes when stock are totally removed. J.J. Hall, Trysor, 2 December 2009

HER PRN:**Relationships:****Photographs:**

Visited on: Field Observation 01-Oct-2009 TR JH

NPRN: 503562

ESGAIR CORMWG, TRACKWAY TRACKWAY

NGR: SN8582470821 Grid reference taken at point along linear site **Altitude:** 439**Period:** Post Medieval? **Broadclass:** Transport**Form:** Earthwork **Condition:** C**Site Status:****Description:** A trackway running northeast to southwest on Esgair Cormwg. The earthwork measured 2m wide. Vegetation cover in 2009 was grass and reeds. J.J. Hall, Trysor, 2 December 2009**HER PRN:****Relationships:** **Photographs:****Visited on:** Field Observation 13-Oct-2009 TR JJH**NPRN: 503563**

ESGAIR CORMWG, STONE PILE II STONE PILE

NGR: SN8508970291 Grid reference taken at centre of site **Altitude:** 487**Period:** Unknown **Broadclass:** Unassigned**Form:** Other Structure **Condition:** C**Site Status:****Description:** A rough stone pile or spread on the southeast facing flank of a localised ridge of conglomerate. The stone pile was 2m in diameter and less than 0.30m high. It may be just a natural collection of stone but it stood out from the surroundings and as there are other structures on this ridge may be the remains of a feature. J.J. Hall, Trysor, 2 December 2009**HER PRN:****Relationships:** **Photographs:**
ELNC2009_042 13/10/2009 Stone pile, looking west.**Visited on:** Field Observation 13-Oct-2009 TR JJH**NPRN: 503564**

ESGAIR CORMWG, CAIRN CAIRN

NGR: SN8508070299 Grid reference taken at centre of site **Altitude:** 470**Period:** Bronze Age? **Broadclass:** Religious Ritual and Funerary**Form:** Other Structure **Condition:** B**Site Status:****Description:** A small, stone cairn on the northeast end of a localised ridge of conglomerate. The cairn is 1m in diameter and 0.3m high. Although the cairn was small, it was structured with the outer stones set on edge in the ground. It was not visible from the wider landscape as a natural rock jutting up 1m to the north of it was what could be seen from a distance. J.J. Hall, Trysor, 2 December 2009**HER PRN:****Relationships:** **Photographs:**
ELNC2009_040 13/10/2009 Cairn, looking east.
ELNC2009_041 13/10/2009 Cairn, looking north.**Visited on:** Field Observation 13-Oct-2009 TR JJH

NPRN: 503565

ESGAIR CORMWG, STRUCTURE I

HUT CIRCLE?;LONG HUT?

NGR: SN8506370246 Grid reference taken at centre of site**Altitude:** 488**Period:** Prehistoric?;Medieval? **Broadclass:** Domestic**Form:** Other Structure **Condition:** D**Site Status:**

Description: A subcircular drystone structure on the southeast facing flank of a localised northeast to southwest ridge of conglomerate. It was constructed within an enhanced natural hollow. Externally it measured 7m north to south by 6m east to west, internally it was 4m in diameter. There was a gap in the rough walling on the eastern side of 1m. In the southwest quadrant of the structure was a raised area, 1.5m north to south by 1.75m east to west, standing up to 0.50m high. J.J. Hall, Trysor, 2 December 2009

HER PRN:**Relationships:****Photographs:**

ELNC2009_043	13/10/2009	Structure, looking southeast.
ELNC2009_044	13/10/2009	Structure, looking west.
ELNC2009_045	13/10/2009	Structure, looking west.
ELNC2009_046	13/10/2009	Structure, looking east.

Visited on: Field Observation 13-Oct-2009 TR JH

NPRN: 503566

ESGAIR CORMWG, STONE PILE I

STONE PILE

NGR: SN8505570258 Grid reference taken at centre of site**Altitude:** 493**Period:** Unknown **Broadclass:** Unassigned**Form:** Other Structure **Condition:** C**Site Status:**

Description: A small stone pile midway along the top of a localised northeast to southwest ridge of conglomerate. The pile was 0.50m in diameter with a central hole. J.J. Hall, Trysor, 2 December 2009

HER PRN:**Relationships:****Photographs:**

ELNC2009_047	13/10/2009	Stone pile, looking northeast.
--------------	------------	--------------------------------

Visited on: Field Observation 13-Oct-2009 TR JH

NPRN: 503567

ESGAIR CORMWG, STRUCTURE II PLATFORM

NGR: SN8507370335 Grid reference taken at centre of site **Altitude:** 466

Period: Unknown **Broadclass:** Monument <By Form>

Form: Other Structure **Condition:** D

Site Status:

Description: A small, rough shelter within outcropping rock at the base of the steep, north-facing slope of a localised, southwest to northeast, ridge of conglomerate. It measured 2.5m northwest to southeast by 2m and was revetted into the slope up to 1m deep. J.J. Hall, Trysor, 2 December 2009

HER PRN:

Relationships:

Associated with 503569

Photographs:

ELNC2009_053 13/10/2009 Structure, looking west.

ELNC2009_054 13/10/2009 Structure, looking west southwest.

Visited on: Field Observation 13-Oct-2009 TR JJH

NPRN: 503568

ESGAIR CORMWG, SHELTER I SHELTER

NGR: SN8506970339 Grid reference taken at centre of site **Altitude:** 463

Period: Unknown **Broadclass:** Monument <By Form>

Form: Other Structure **Condition:** C

Site Status:

Description: A small shelter within the outcropping rock at the base of a steep, north-facing steep slope of a localised rock ridge. The shelter measured approximately 2.5m northwest to southeast by 2m. The southeast end was up to 1m deep, with two rough stone walls enclosing it. J.J. Hall, Trysor, 2 December 2009

HER PRN:

Relationships:

Photographs:

ELNC2009_055 13/10/2009 Shelter, looking southeast.

Visited on: Field Observation 13-Oct-2009 TR JJH

NPRN: 503569

ESGAIR CORMWGW, STRUCTURE III

PLATFORM

NGR: SN8507770329 Grid reference taken at centre of site**Altitude:** 467**Period:** Unknown **Broadclass:** Monument <By Form>**Form:** Other Structure **Condition:** C**Site Status:**

Description: A rough platform created within the outcropping rock at the base of the steep, north-facing slope of a localised southwest to northeast ridge of conglomerate. The platform area was approximately 4m in diameter. The level area had a revetted edge on its northern side. The gently curving revetment was drystone-walled, 0.75m thick and up to 0.90m high. J.J. Hall, Trysor, 2 December 2009

HER PRN:**Relationships:**

Associated with 503567

Photographs:

ELNC2009_048	13/10/2009	Structure, looking south southeast.
ELNC2009_049	13/10/2009	Structure, looking southeast.
ELNC2009_050	13/10/2009	Structure, looking east southeast.
ELNC2009_051	13/10/2009	Detail of revetted walling, looking southeast.
ELNC2009_052	13/10/2009	Structure, looking east southeast.

Visited on: Field Observation 13-Oct-2009 TR JH

NPRN: 503570

ESGAIR CORMWGW, SHELTER II

SHELTER?

NGR: SN8505970346 Grid reference taken at centre of site**Altitude:** 460**Period:** Unknown **Broadclass:** Monument <By Form>**Form:** Other Structure **Condition:** D**Site Status:**

Description: An area of 3m south southeast to north northwest by 2.5m within outcropping rock at the base of the steep, north-facing slope of a localised, southwest to northeast, ridge of conglomerate. It was thought that it could be a rough shelter associated with structures to the south but it could be natural. J.J. Hall, Trysor, 2 December 2009

HER PRN:**Relationships:****Photographs:**

ELNC2009_056	13/10/2009	Shelter, looking north.
--------------	------------	-------------------------

Visited on: Field Observation 13-Oct-2009 TR JH

NPRN: 503571

ESGAIR PENTANAU, STONE SHELTER

SHOOTING STAND?

NGR: SN8459670229 Grid reference taken at centre of site**Altitude:** 503**Period:** Modern? **Broadclass:** Recreational**Form:** Other Structure **Condition:** B**Site Status:**

Description: A small, sub-rectilinear, drystone structure built within outcropping rock on a linear low ridge to the northeast of the lake at Cerrigllwydion Isaf. It measured 3m northeast - southwest by 2m externally, 2m by 0.75m internally, and was open to the northeast. It was thought that it was possibly a shooting stand. J.J. Hall, Trysor, 2 December 2009

HER PRN:**Relationships:****Photographs:**

ELNC2009_029 13/10/2009 Structure, looking north.

Visited on: Field Observation 13-Oct-2009 TR JJH**NPRN:** 503572

CERRIGLLWYDION, SHELTER

SHELTER

NGR: SN8452369970 Grid reference taken at centre of site**Altitude:** 493**Period:** Post Medieval **Broadclass:** Monument <By Form>**Form:** Other Structure **Condition:** C**Site Status:**

Description: A very roughly built, drystone structure built on natural boulders on the northern side of leat NPRN 261660. The structure was V shaped with the point towards the west, the east side was open. It measures 2m by 1.2m and the walls stood up to 0.30m high. J.J. Hall, Trysor, 2 December 2009

HER PRN:**Relationships:****Photographs:**

ELNC2009_030 13/10/2009 Shelter, looking northwest.

Visited on: Field Observation 13-Oct-2009 TR JJH

NPRN: 503573

NANT HIRIN, LONG HUT

LONG HUT

NGR: SN8516070801 Grid reference taken at centre of site**Altitude:** 415**Period:** Medieval?;Post Medieval? **Broadclass:** Domestic**Form:** Ruin **Condition:** D**Site Status:**

Description: A rectangular, drystone structure on the northern side of the Nant Hirin. It measured 9m southwest to northeast by 5.25m externally, 7m by 3.25m internally. The wall bases were substantial, up to 1m wide but remaining to no more than 0.30m high. There was no clear evidence for an internal division or entrance but the whole feature was turf-covered in October 2009 with only some stone protruding through. J.J. Hall, Trysor, 2 December 2009

HER PRN:**Relationships:****Photographs:**

ELNC2009_036	13/10/2009	Long hut, looking north.
ELNC2009_037	13/10/2009	Long hut, looking southwest.
ELNC2009_038	13/10/2009	Long hut, looking northwest.
ELNC2009_039	13/10/2009	Long hut, looking northeast.

Visited on: Field Observation 13-Oct-2009 TR JJH

NPRN: 503574

GLANHIRIN, BANK

BANK (EARTHWORK)

NGR: SN8662171365 Grid reference taken at point along linear site**Altitude:** 382**Period:** Post Medieval **Broadclass:** Monument <By Form>**Form:** Earthwork **Condition:** C**Site Status:**

Description: An earthwork bank, 1.5m wide and 0.40m high, running east northeast to west southwest just outside the present-day enclosed field system at Glanhirin. Although the bank is not shown on the 1st and 2nd 1:10560 edition Ordnance Survey maps of 1891 and 1905, it appears to have been associated with the footpath and trackway shown on these maps. The bank was traced from SN8662371366 to SN8659671358 where it would have reached the former trackway, NPRN 503528. Between SN8662171365 to SN8661771364, a gap through which footpath NPRN 503595 would have run. J.J. Hall, Trysor, 2 December 2009

HER PRN:**Relationships:****Photographs:**

Associated with	503595	ELNC2009_061	14/10/2009	The eastern part of the bank on which the figure is standing with the gap for footpath NPRN 503595 on the right hand side, looking south.
		ELNC2009_062	14/10/2009	Western part of the bank, looking west southwest

Visited on: Field Observation 14-Oct-2009 TR JJH

NPRN: 503575

NANT HIRIN, SHEEP WASH

SHEEP WASH

NGR: SN8623471159 Grid reference taken at centre of site **Altitude:** 384
Period: Post Medieval **Broadclass:** Agriculture and Subsistence
Form: Other Structure **Condition:** C

Site Status:

Description: This structure consists of a doglegged revetment and bank leading down to a pool in the Nant Hirin. It is shown on the 1st edition 1:10560 Ordnance Survey map of 1891 but not labelled and is probably shown on the 1833 1" to 1 mile map as well. The northern part of the structure starts with a stone-lined revetment cut into the natural slope. This revetment was up to 1m high and ran north northwest to south southeast for 10m, then turned to the southwest for another 7.5m. At this point the revetment butted onto a grass-covered stone bank, 2m wide and 0.75m high which ran for 12m down to the pool in the stream. J.J. Hall, Trysor, 2 December 2009

HER PRN:

Relationships:

Photographs:

ELNC2009_064	14/10/2009	Sheep wash, looking northwest.
ELNC2009_065	14/10/2009	Part of the sheep wash, looking east southeast.
ELNC2009_066	14/10/2009	Southern end of sheep wash including the pool in the stream, looking west northwest.

Visited on: Field Observation 14-Oct-2009 TR JJH

NPRN: 503576

ESGAIR CORMWG, MARKER CAIRN

MARKER CAIRN

NGR: SN8512270111 Grid reference taken at centre of site **Altitude:** 496
Period: Modern? **Broadclass:** Unassigned
Form: Other Structure **Condition:** C

Site Status:

Description: A small marker cairn composed of quartz blocks, within former leat NPRN 261660. The cairn was 1m in diameter and 0.5m high. J.J. Hall, Trysor, 2 December 2009

HER PRN:

Relationships:

Photographs:

ELNC2009_067	14/10/2009	Marker cairn, looking northwest.
--------------	------------	----------------------------------

Visited on: Field Observation 14-Oct-2009 TR JJH

NPRN: 503577LLYN CERRIGLLWYDION ISAF, BOAT
SHED

BOAT HOUSE

NGR: SN8435169828 Grid reference taken at centre of site **Altitude:** 500**Period:** Modern **Broadclass:** Transport**Form:** Other Structure **Condition:** A**Site Status:****Description:** A small, boat shed on dry land on the southern side of Llyn Cerrigllwydion Isaf. The boat shed was made of tin sheet and had room for a single small boat. J.J. Hall, Trysor, 2 December 2009**HER PRN:****Relationships:****Photographs:**

ELNC2009_073 14/10/2009 Boat shed, looking northwest.

Visited on: Field Observation 14-Oct-2009 TR JHH**NPRN:** 503578

CEFN FFOS YR EWIG, MARKER CAIRN

MARKER CAIRN

NGR: SN8354569804 Grid reference taken at centre of site **Altitude:** 537**Period:** Post Medieval?;Modern? **Broadclass:** Unassigned**Form:** Other Structure **Condition:** B**Site Status:****Description:** A stone marker cairn, rough but well-constructed, on an isolated low rock outcrop. The cairn was 1m in diameter and 1m high. J.J. Hall, Trysor, 2 December 2009**HER PRN:****Relationships:****Photographs:**

ELNC2009_074 14/10/2009 Marker cairn, looking northeast.

Visited on: Field Observation 14-Oct-2009 TR JHH**NPRN:** 503579

BANC STEFFAN, MARKER CAIRN

MARKER CAIRN

NGR: SN8337670045 Grid reference taken at centre of site **Altitude:** 546**Period:** Post Medieval?;Modern? **Broadclass:** Unassigned**Form:** Other Structure **Condition:** B**Site Status:****Description:** A small, grass-covered, marker cairn on a low ridge. The cairn is 1m in diameter and 0.20m high. In the centre is an upright stone and on the northwest side of the cairn is a stone scratched with "Glyndwr 2000". J.J. Hall, Trysor, 2 December 2009**HER PRN:****Relationships:****Photographs:**

ELNC2009_075 14/10/2009 Marker cairn, looking southeast.

Visited on: Field Observation 14-Oct-2009 TR JHH

NPRN: 503580

BLAEN RHESTR, STRUCTURE

SHELTER

NGR: SN8418369386 Grid reference taken at centre of site**Altitude:** 525**Period:** Post Medieval?;Modern? **Broadclass:** Monument <By Form>**Form:** Other Structure **Condition:** B**Site Status:****Description:** A drystone, unroofed structure, built at the base of slope on the southeastern side of a rocky ridge. The structure was subsquare and open to the northeast. It was roughly 3.75m square and in October 2009, the walls stood up to 1m high. J.J. Hall, Trysor, 2 December 2009**HER PRN:****Relationships:****Photographs:**

ELNC2009_076 14/10/2009 Drystone structure, looking southwest.

ELNC2009_077 14/10/2009 Drystone structure, looking northeast.

Visited on: Field Observation 14-Oct-2009 TR JJH**NPRN:** 503581

BLAEN RHESTR, MARKER CAIRN II

MARKER CAIRN

NGR: SN8421069427 Grid reference taken at centre of site**Altitude:** 540**Period:** Post Medieval?;Modern? **Broadclass:** Unassigned**Form:** Other Structure **Condition:** B**Site Status:****Description:** A small marker cairn, 1m in diameter and 0.75m high, on the top of a rocky ridge. J.J. Hall, Trysor, 2 December 2009**HER PRN:****Relationships:****Photographs:**

ELNC2009_078 14/10/2009 Marker cairn, looking southwest.

Visited on: Field Observation 14-Oct-2009 TR JJH**NPRN:** 503582

BLAEN RHESTR, MARKER CAIRN I

MARKER CAIRN

NGR: SN8423869440 Grid reference taken at centre of site**Altitude:** 541**Period:** Modern? **Broadclass:** Unassigned**Form:** Other Structure **Condition:** B**Site Status:****Description:** A small rough marker cairn on the top of a rocky ridge. The cairn measured 0.75m in diameter and was no more than 0.30m high. J.J. Hall, Trysor, 2 December 2009**HER PRN:****Relationships:****Photographs:**

ELNC2009_079 14/10/2009 Marker cairn, looking east southeast.

Visited on: Field Observation 14-Oct-2009 TR JJH

NPRN: 503583

BLAEN RHESTR, STONE PILE

MARKER CAIRN

NGR: SN8466469628 Grid reference taken at centre of site **Altitude:** 530**Period:** Modern? **Broadclass:** Unassigned**Form:** Other Structure **Condition:** B**Site Status:****Description:** A very small, stone pile or cairn, placed on a small rocky ridge. The stone pile measured roughly 0.50m in diameter and 0.25m high. J.J. Hall, Trysor, 2 December 2009**HER PRN:****Relationships:****Photographs:**

ELNC2009_081 14/10/2009 Small stone pile, looking northeast.

Visited on: Field Observation 14-Oct-2009 TR JJH**NPRN: 503584**

LLETHR FFOS TO, PEAT WORKINGS

PEAT WORKINGS

NGR: SN8300668717 Grid reference taken at a central point within extensive site **Altitude:** 510**Period:** Post Medieval **Broadclass:** Industrial**Form:** Earthwork **Condition:** C**Site Status:****Description:** An area of peat workings, including three separate cuttings within an area circa 175m x 70m in extent. J.J. Hall, Trysor, 21 January 2010**HER PRN:****Relationships:****Photographs:****Visited on:** Field Observation 14-Oct-2009 TR JJH**NPRN: 503585**

DDWYNANT, TRACKWAY

TRACKWAY

NGR: SN8268167058 Grid reference taken at point along linear site **Altitude:** 398**Period:** Post Medieval **Broadclass:** Transport**Form:** Earthwork **Condition:** C**Site Status:****Description:** A length of denuded trackway, running for approximately 195m southwest to northeast from the road, NPRN 504565, to Claerwen farm up onto the hill pasture. Presumably a former access point used by the farm to its hill pasture. J.J. Hall, Trysor, 21 January 2010**HER PRN:****Relationships:****Photographs:****Visited on:** Field Observation 01-Oct-2009 TR JJH

NPRN: 503586

CERRIGLLWYDION, SHED

SHED

NGR: SN8419269199 Grid reference taken at centre of site**Altitude:** 524**Period:** Modern **Broadclass:** Unassigned**Form:** Building **Condition:** A**Site Status:**

Description: This corrugated iron shed is only shown on modern Ordnance Survey mapping. According to a local informant the adjacent hut, NPRN 503506, was built at the beginning of the 20th century for local fishermen. Both buildings sit on a level area cut into the north northwest slope and revetted by a rough stone wall. The shed measures roughly 5m by 5m and is painted green. The shed was still in use in 2009. J.J. Hall, Trysor, 29 May 2009

HER PRN:**Relationships:**

Associated with 503506

Photographs:

ELNC2009_028 14/07/2009 Shed, looking southwest, with hut NPRN 503506 beyond.

Visited on: Field Observation 14-Jul-2009 TR JJH**NPRN: 503587**

DDWYNANT, PEAT WORKINGS

PEAT WORKINGS

NGR: SN8265867309 Grid reference taken at a central point within extensive site**Altitude:** 403**Period:** Post Medieval **Broadclass:** Industrial**Form:** Earthwork **Condition:** C**Site Status:**

Description: A large area of peat cutting, measuring circa 280m northeast to southwest by 140m. It is situated on a broad flat terrace to the west of the Ddwynant stream. Vegetation in the locality in 2009 was purple moor grass. J.J. Hall, Trysor, 21 January 2010

HER PRN:**Relationships:****Photographs:****Visited on:** Field Observation 01-Oct-2009 TR JJH**NPRN: 503588**

CLAERWEN, TRACKWAY II

TRACKWAY

NGR: SN8234467167 Grid reference taken at point along linear site**Altitude:** 390**Period:** Post Medieval **Broadclass:** Transport**Form:** Earthwork **Condition:** C**Site Status:**

Description: A trackway shown on the 1st edition Ordnance Survey 1:10560 map of 1891. It ran from Claerwen farm, NPRN 503516, for 350m eastwards, onto the adjacent hill pasture. It survives as a grass-covered linear earthwork, rock-cut in places, and up to 2m wide. J.J. Hall, Trysor, 22 January 2010

HER PRN:**Relationships:**

Associated with 503516

Photographs:**Visited on:** Field Observation 13-Jul-2009 TR JJH

NPRN: 503589

CLAERWEN, TRACKWAY I

TRACKWAY

NGR: SN8231367309 Grid reference taken at point along linear site **Altitude:** 417
Period: Post Medieval **Broadclass:** Transport
Form: Earthwork **Condition:** C

Site Status:

Description: A disused trackway which ran from Claerwen farm, NPRN 503516, onto adjacent hill pasture to the northeast. It survives as a grass-covered, linear earthwork which can be traced on the ground for over 400m. J.J. Hall, Trysor, 22 January 2010

HER PRN:**Relationships:**

Associated with 503516

Photographs:

Visited on: Field Observation 13-Jul-2009 TR JJH

NPRN: 503590

CLAERWEN, BANK

BANK (EARTHWORK)

NGR: SN8206867412 Grid reference taken at centre of site **Altitude:** 395
Period: Post Medieval **Broadclass:** Monument <By Form>
Form: Earthwork **Condition:** C

Site Status:

Description: A short length survives of a substantial earth bank, running east-west, apparently part of an field enclosure pre-dating the present layout associated with Claerwen farm. J.J. Hall, Trysor, 22 January 2010

HER PRN:**Relationships:****Photographs:**

Visited on: Field Observation 13-Jul-2009 TR JJH

NPRN: 503591

CLAERWEN, ENCLOSURE

EXPERIMENTAL PLOT

NGR: SN8248967808 Grid reference taken at centre of site **Altitude:** 464
Period: Modern **Broadclass:** Education
Form: Earthwork **Condition:** C

Site Status:

Description: A square post and wire fenced enclosure erected in the 20th century. The Elan Trust informed Trysor that enclosures such as this were part of an ongoing study to assess vegetation changes when stock are totally removed. J.J. Hall, Trysor, 22 January 2010

HER PRN:**Relationships:****Photographs:**

Visited on: Field Observation 13-Jul-2009 TR JJH

NPRN: 503592

AFON CLAERWEN, STRUCTURE SHELTER

NGR: SN8229768864 Grid reference taken at centre of site **Altitude:** 442
Period: Medieval?;Post Medieval? **Broadclass:** Monument <By Form>
Form: Other Structure **Condition:** D

Site Status:

Description: A grass-covered, rough shelter on a level terrace on the eastern side of the Afon Claerwen, just to the east of a longhouse, NPRN 503555. It measured 2m by 2m and less than 0.15m high and was probably open to the southeast. J.J. Hall, Trysor, 30 January 2010

HER PRN:

Relationships: Associated with 503555 **Photographs:** ELNC2009_086 11/09/2009 Shelter, looking southeast.
Visited on: Field Observation 11-Sep-2009 TR JJH

NPRN: 503593

GLANHIRIN, TRACKWAY V TRACKWAY

NGR: SN8679472058 Grid reference taken at point along linear site **Altitude:** 411
Period: Modern **Broadclass:** Transport
Form: Earthwork **Condition:** C

Site Status:

Description: A short, grass-covered trackway associated with quarry NPRN 503518 on Glanhirin farm. J.J. Hall, Trysor, 22 January 2010

HER PRN:

Relationships: Associated with 503518 **Photographs:**
Visited on: Field Observation 18-Jun-2009 TR JJH

NPRN: 503594

LLYN CERRIGLLWYDION ISAF, DAM II DAM

NGR: SN8451170206 Grid reference taken at centre of site **Altitude:** 495
Period: Post Medieval **Broadclass:** Water Supply and Drainage
Form: Other Structure **Condition:** B

Site Status:

Description: A drystone dam placed across the point where the Ffrwd Wen stream exits Llyn Cerrigllwydion Isaf. It consists of stone piled up to a height of 0.30m above the ground surface. It measures at least 15m east northeast to west southwest by at least 1.5m wide, but was partially obscured by vegetation. Water trickles through it to the stream. It was presumably built to raise, or maintain, the water level of the lake so that sufficient water was available for leat NPRN 260661 running from dam NPRN 503507. J.J. Hall, Trysor, 23 January 2010

HER PRN:

Relationships: Associated with 503507 **Photographs:**
Visited on: Field Observation 13-Oct-2009 TR JJH

NPRN: 503595

GLANHIRIN, FOOTPATH

FOOTPATH

NGR: SN8662871346 Grid reference taken at point along linear site **Altitude:** 372
Period: Post Medieval **Broadclass:** Transport
Form: Earthwork **Condition:** V

Site Status:

Description: A short piece of footpath shown on 1st and 2nd edition 1:10560 Ordnance Survey maps of 1891 and 1905. It acted as a shortcut from track NPRN503528 at SN8661171373 down to a footbridge, NPRN 503596 at SN8666071327, crossing the Nant Hirin and then on to join the track again just beyond the bridge. In places the footpath could still be traced, notably where it passed through bank NPRN 503595. J.J. Hall, Trysor, 24 January 2010

HER PRN:**Relationships:**

Associated with 503574
 Associated with 503528
 Associated with 503596

Photographs:

ELNC2009_063 14/10/2009 Holloway along which footpath ran, with bank NPRN 503574 on the left hand side of the photograph, looking south.

Visited on: Field Observation 14-Oct-2009 TR JJH

NPRN: 503596

GLANHIRIN, FOOTBRIDGE

FOOTBRIDGE

NGR: SN8666171324 Grid reference taken at centre of site **Altitude:** 376
Period: Post Medieval **Broadclass:** Transport
Form: Documents **Condition:** E

Site Status:

Description: A former footbridge carrying footpath NPRN 503595 over the Nant Hirin. Although the footbridge is shown on the 1st and 2nd edition 1:10560 Ordnance Survey maps of 1891 and 1905, no trace of it was seen during a field visit in October 2009. J.J. Hall, Trysor, 24 January 2010

HER PRN:**Relationships:**

Associated with 503595

Photographs:

Visited on: Field Observation 14-Oct-2009 TR JJH

NPRN: 503597

GLANHIRIN, SHED I

AGRICULTURAL BUILDING

NGR: SN8651071700 Grid reference taken at centre of site **Altitude:** 408**Period:** Modern **Broadclass:** Agriculture and Subsistence**Form:** Building **Condition:** A**Site Status:****Description:** A large agricultural shed on the north side of the farmyard at Glanhirin, NPRN 22670. It is a steel-framed structure clad with tin sheet and measures approximately 38m northeast to southwest by 14m. It was still in use in 2009. J.J. Hall, Trysor, 31 January 2010**HER PRN:****Relationships:** **Photographs:**

Part of 22670

Visited on: Field Observation 13-Oct-2009 TR JJH**NPRN:** 503598

GLANHIRIN, SHED II

AGRICULTURAL BUILDING

NGR: SN8649271673 Grid reference taken at centre of site **Altitude:** 408**Period:** Post Medieval **Broadclass:** Agriculture and Subsistence**Form:** Building **Condition:** A**Site Status:****Description:** An agricultural building on the northwestern side of the farmyard at Glanhirin, NPRN 22670. It measures approximately 15m north northeast to south southwest by 6.5m. It was still in use in 2009. J.J. Hall, Trysor, 31 January 2010**HER PRN:****Relationships:** **Photographs:**

Part of 22670

Visited on: Field Observation 13-Oct-2009 TR JJH**NPRN:** 503599

GLANHIRIN, SHED III

AGRICULTURAL BUILDING

NGR: SN8649271632 Grid reference taken at centre of site **Altitude:** 403**Period:** Modern **Broadclass:** Agriculture and Subsistence**Form:** Building **Condition:** A**Site Status:****Description:** A large agricultural shed on the west side of the farmyard at Glanhirin, NPRN 22670. It is a steel-framed structure clad with tin sheet and measures approximately 20m northeast to southwest by 21m. J.J. Hall, Trysor, 31 January 2010**HER PRN:****Relationships:** **Photographs:**

Part of 22670

Visited on: Field Observation 13-Oct-2009 TR JJH

NPRN: 503600

GLANHIRIN, FARM BUILDING

AGRICULTURAL BUILDING

NGR: SN8649971651 Grid reference taken at centre of site **Altitude:** 404**Period:** Post Medieval **Broadclass:** Agriculture and Subsistence**Form:** Building **Condition:** A**Site Status:****Description:** A stone-built agricultural building adjoining the western gable of farmhouse, NPRN 503532, at Glanhirin and measuring approximately 15m northeast to southwest by 6m. It was still in use in 2009. J.J. Hall, Trysor, 31 January 2010**HER PRN:****Relationships:**

Part of 22670

Photographs:**Visited on:** Field Observation 13-Oct-2009 TR JJH**NPRN:** 503601

ESGAIR CORMWG, WALLING

WALL?

NGR: SN8504970234 Grid reference taken at centre of site **Altitude:** 490**Period:** Medieval?;Post Medieval? **Broadclass:** Monument <By Form>**Form:** Other Structure **Condition:** D**Site Status:****Description:** A length of possible walling on the southeast side of localised, northeast to southwest, rocky outcrop. The walling was 0.50m wide and ran for at least 5m east to west. There was other jumbled stone around which may be the remains of a structure. The vegetation cover was reeds in 2009. J.J. Hall, Trysor, 6 February 2010**HER PRN:****Relationships:****Photographs:**

ELNC2009_100 13/10/2009 Wall, looking southeast.

Visited on: Field Observation 13-Oct-2009 TR JJH**NPRN:** 503602

CLAERWEN, FARMHOUSE I

FARMHOUSE

NGR: SN8210867357 Grid reference taken at centre of site **Altitude:** 399**Period:** Post Medieval **Broadclass:** Domestic**Form:** Ruin **Condition:** U**Site Status:****Description:** The 19th century farmhouse at Claerwen is shown to the southeast of the present farmhouse, NPRN 30561 on the 1st and 2nd editions of the 1:10560 Ordnance Survey maps dating to 1891 and 1905 respectively. It was aligned east northeast to west southwest, more or less at right angles to the present house. The site was not visited during Uplands Survey in 2009 but the RCAHMW said that, in 1988, the ruined farmhouse lay between the present house and the farm buildings. J.J. Hall, Trysor, 6 February 2010**HER PRN:****Relationships:**

Part of 503516

Part of 503516

Photographs:**Visited on:** Field Observation 13-Jul-2009 TR JJH

NPRN: 503603

CLAERWEN, SHED

SHED

NGR: SN8209767347 Grid reference taken at centre of site **Altitude:** 399**Period:** Modern **Broadclass:** Monument <By Form>**Form:** Building **Condition:** A**Site Status:****Description:** A small tin-clad shed close to the location of the former farmhouse, NPRN 503602, at Claerwen. It was still in use in 2009. J.J. Hall, Trysor, 6 February 2010**HER PRN:****Relationships:**

Part of 503516

Photographs:**Visited on:** Field Observation 13-Jul-2009 TR JJH**NPRN:** 503604

CLAERWEN, SHED

SHED

NGR: SN8211267349 Grid reference taken at centre of site **Altitude:** 400**Period:** Modern **Broadclass:** Monument <By Form>**Form:** Building **Condition:** U**Site Status:****Description:** A small shed, shown on modern Ordnance Survey maps close to the location of the former farmhouse, NPRN 503602, at Claerwen. The building was not seen during Uplands Survey in 2009. J.J. Hall, Trysor, 6 February 2010**HER PRN:****Relationships:**

Part of 503604

Photographs:**Visited on:** Field Observation 13-Jul-2009 TR JJH**NPRN:** 503605

CLAERWEN, AGRICULTURAL BUILDING I

AGRICULTURAL BUILDING

NGR: SN8210267326 Grid reference taken at centre of site **Altitude:** 396**Period:** Modern **Broadclass:** Agriculture and Subsistence**Form:** Building **Condition:** A**Site Status:****Description:** A farm building at Claerwen, NPRN 503516. It is tin-clad with a slate roof and measures approximately 13m north northwest to south southeast by 6m. The inside of the building was not seen during Uplands Survey in 2009 and it is not certain which building it corresponds to in the RCAHM NMR site file description of 1988, see NPRN 30561. J.J. Hall, Trysor, 6 February 2010**HER PRN:****Relationships:**

Part of 503516

Photographs:**Visited on:** Field Observation 13-Jul-2009 TR JJH

NPRN: 503606

CLAERWEN, AGRICULTURAL BUILDING

AGRICULTURAL BUILDING

III

NGR: SN8210667304 Grid reference taken at centre of site**Altitude:** 395**Period:** Post Medieval**Broadclass:** Agriculture and Subsistence**Form:** Building**Condition:** A**Site Status:**

Description: A farm building at Claerwen, NPRN 503516. It is stone-built with a slate roof and measures approximately 21m north northwest to south southeast by 6m. The inside of the building was not seen during Uplands Survey in 2009 and it is not certain which building it corresponds to in the RCAHM NMR site file description of 1988, see NPRN 30561. J.J. Hall, Trysor, 6 February 2010

HER PRN:**Relationships:****Photographs:**

Part of 503516

Visited on: Field Observation 13-Jul-2009 TR JJH

NPRN: 503607

CLAERWEN, AGRICULTURAL BUILDING II

AGRICULTURAL BUILDING

NGR: SN8212167305 Grid reference taken at centre of site**Altitude:** 396**Period:** Modern**Broadclass:** Agriculture and Subsistence**Form:** Building**Condition:** A**Site Status:**

Description: A farm building at Claerwen, NPRN 503516. It is tin-clad, steel-framed structure and measures approximately 27m north northwest to south southeast by 14.5m. The inside of the building was not seen during Uplands Survey in 2009 and it is not certain which building it corresponds to in the RCAHMW NMR site file description of 1988, see NPRN 30561. J.J. Hall, Trysor, 6 February 2010

HER PRN:**Relationships:****Photographs:**

Visited on: Field Observation 13-Jul-2009 TR JJH

NPRN: 503608

GLANHIRIN, TRACKWAY III

TRACKWAY

NGR: SN8607071500 Grid reference taken at point along linear site **Altitude:** 440
Period: Modern **Broadclass:** Transport
Form: Earthwork **Condition:** A

Site Status:

Description: A substantial modern trackway from the farmyard at Glanhirin, SN8645071610, westwards to SN8561071540 where it ended in a turning circle, also used as a feeding area. The trackway was still in use in 2009. J.J. Hall, Trysor, 6 February 2010

HER PRN:**Relationships:**

Associated with 503534

Photographs:

ELNC2009_106 18/06/2009 Turning circle and feeding area at the end of the track, looking southeast.

Visited on: Field Observation 18-Jun-2009 TR JJH

NPRN: 503609

GLANHIRIN, TRACKWAY II

TRACKWAY

NGR: SN8619071360 Grid reference taken at point along linear site **Altitude:** 397
Period: Modern **Broadclass:** Transport
Form: Earthwork **Condition:** A

Site Status:

Description: A substantial modern trackway from the trackway, NPRN 503608, at SN8626071520 south southwestwards to SN8612071140 where it fords the Nant Hirin, and then continues up the slope to SN8596070920. This end of the trackway is substantially rock cut. J.J. Hall, Trysor, 6 February 2010

HER PRN:**Relationships:****Photographs:**

ELNC2009_104 13/10/2009 Modern trackway, looking south southwest.
 ELNC2009_105 13/10/2009 Modern trackway, looking south.

Visited on: Field Observation 13-Oct-2009 TR JJH

NPRN: 503610

CLAERWEN, BRIDGE

BRIDGE

NGR: SN8255567037 Grid reference taken at centre of site **Altitude:** 380
Period: Modern **Broadclass:** Transport
Form: Other Structure **Condition:** A

Site Status:

Description: A mid 20th century flat bridge carrying the track, NPRN 504565, along the northern side of the Claerwen reservoir, over the Ddwynant. J.J. Hall, Trysor, 6 February 2010

HER PRN:**Relationships:**

Associated with 504565

Photographs:

Visited on: Field Observation 01-Oct-2009 TR JJH

NPRN: 503611

NANT Y FIGYN, FOOTBRIDGE

FOOTBRIDGE

NGR: SN8195669323 Grid reference taken at centre of site **Altitude:** 457**Period:** Modern **Broadclass:** Transport**Form:** Other Structure **Condition:** A**Site Status:****Description:** A wooden bridge, across the Nant y Figyn, constructed of railway sleepers. J.J. Hall, Trysor, 6 February 2010**HER PRN:****Relationships:****Photographs:**

ELNC2009_101 11/09/2009 Footbridge, looking north.

Visited on: Field Observation 11-Sep-2009 TR JJH**NPRN:** 503612

AFON CLAERWEN, STONE PILE

STONE PILE

NGR: SN8231368838 Grid reference taken at centre of site **Altitude:** 440**Period:** Unknown **Broadclass:** Unassigned**Form:** Other Structure **Condition:** C**Site Status:****Description:** A grass-covered, stone pile on a river terrace on the eastern side of the Afon Claerwen. It measures 1m in diameter and less than 0.15m high. J.J. Hall, Trysor, 6 February 2010**HER PRN:****Relationships:****Photographs:**

ELNC2009_102 11/09/2009 Stone pile, looking southeast.

Visited on: Field Observation 11-Sep-2009 TR JJH**NPRN:** 503613

ESGAIR GWAR Y TY, ENCLOSURE

EXPERIMENTAL PLOT?

NGR: SN8229267529 Grid reference taken at centre of site **Altitude:** 441**Period:** Modern **Broadclass:** Education**Form:** Other Structure **Condition:** B**Site Status:****Description:** An area of wooden posts arranged in rectangles, with wiring or fencing. There purpose was unclear but thought that they may be connected to other experimental plots in the area, monitoring vegetation changes. J.J. Hall, Trysor, 15 February 2010**HER PRN:****Relationships:****Photographs:**

ELNC2009_135 13/07/2009 Some of the wooden posts, looking northeast.

Visited on: Field Observation 13-Jul-2009 TR JJH

NPRN: 503614

ESGAIR GWAR Y TY, QUARRY

QUARRY

NGR: SN8222667268 Grid reference taken at centre of site**Altitude:** 410**Period:** Post Medieval **Broadclass:** Industrial**Form:** Earthwork **Condition:** C**Site Status:**

Description: A narrow, shallow, linear quarry running down the south-facing slope on the end of Esgair y Ty. The working can be traced on the ground for a distance of approximately 55m north northeast to south southwest. It was less than 2m wide and 0.5m and was grass-covered in July 2009. J.J. Hall, Trysor, 15 February 2010

HER PRN:**Relationships:****Photographs:**

ELNC2009_136 13/07/2009 Upper part of quarried line, looking south.

Visited on: Field Observation 13-Jul-2009 TR JJH**NPRN:** 503615

LLETHR FFOS TO, TRACKWAY

TRACKWAY

NGR: SN8292069240 Grid reference taken at point along linear site**Altitude:** 507**Period:** Post Medieval? **Broadclass:** Transport**Form:** Earthwork **Condition:** C**Site Status:**

Description: A length of disused trackway which ascends Llethr Ffos To. It is up to 4m wide and runs for over 100m. Its lower section runs northeast for some 30m, before turning sharply to run south-southwest up the slope. It peters out once it reaches the top of the slope. R.P. Sambrook, Trysor, 20 February 2010

HER PRN:**Relationships:****Photographs:****Visited on:** Field Observation 13-Jul-2009 TR JJH**NPRN:** 504565

CLAERWEN, TRACKWAY III

ROAD

NGR: SN8586265298 Grid reference taken at point along linear site**Altitude:** 420**Period:** Modern **Broadclass:** Transport**Form:** Other Structure **Condition:** A**Site Status:**

Description: The mid 20th century track or road along the northern margin of the Claerwen reservoir, this section running from Claerwen farmstead in the west to the Claerwen reservoir dam in the east, a distance of approximately 10km. The well-constructed track was made when the reservoir was created in 1946-1952. The tracks surface is loose stone. It is carried over tributary streams to the former Claerwen river by flat, stone bridges. J.J. Hall, Trysor, 8 December 2009

HER PRN:**Relationships:****Photographs:**

Associated with 503610

Visited on:

