

Uplands Initiative Elenydd (South)

Archaeological Survey (Part Two)



For: The Royal Commission on the Ancient
and Historical Monuments of Wales

December 2009



Uplands Initiative Elenydd (South)

Archaeological Survey (Part Two)

By

Jenny Hall MifA & Paul Sambrook MifA
Trysor

Trysor Project No. 2009/157

**For: The Royal Commission on the Ancient
and Historical Monuments of Wales**

Royal Commission Ref. No. RCS 1/2/143

December 2009



Cover photograph: Looking south down the Dyfnant valley towards the Claerwen reservoir. The Dyfnant long hut (NPRN 504568) can be seen on the left side of the terrace in the middle ground.

ELENYDD (SOUTH)

RHIF YR ADRODDIAD - REPORT NUMBER: Trysor 2009/157

DYDDIAD 15fed Rhagfyr 2009

DATE

15th December 2009

Paratowyd yr adroddiad hwn gan bartneriad Trysor. Mae wedi ei gael yn gywir ac yn derbyn ein sêl bendith.

This report was prepared by the Trysor partners. It has been checked and received our approval.

JENNY HALL MifA

J Hall

PAUL SAMBROOK MifA

R.P. Sambrook

DYDDIAD / DATE

15/12/2009

Croesawn unrhyw sylwadau ar gynnwys neu strwythur yr adroddiad hwn.

We welcome any comments on the content or structure of this report.

Introduction

This is the second part of a two part report.

Part One includes a synthesis of the results of fieldwork carried out by Trysor in the Elenydd (South) study area in 2009.

Part Two includes location maps and the site gazetteer based on the findings of the fieldwork.

The layout of the report is self-explanatory; the site location maps (9 figures in total) precede the printout of the Site Gazetteer on page 11.

The location maps use the 2nd Edition Ordnance Survey maps of 1903-5 as background data as supplied by the RCAHMW for the use of the project

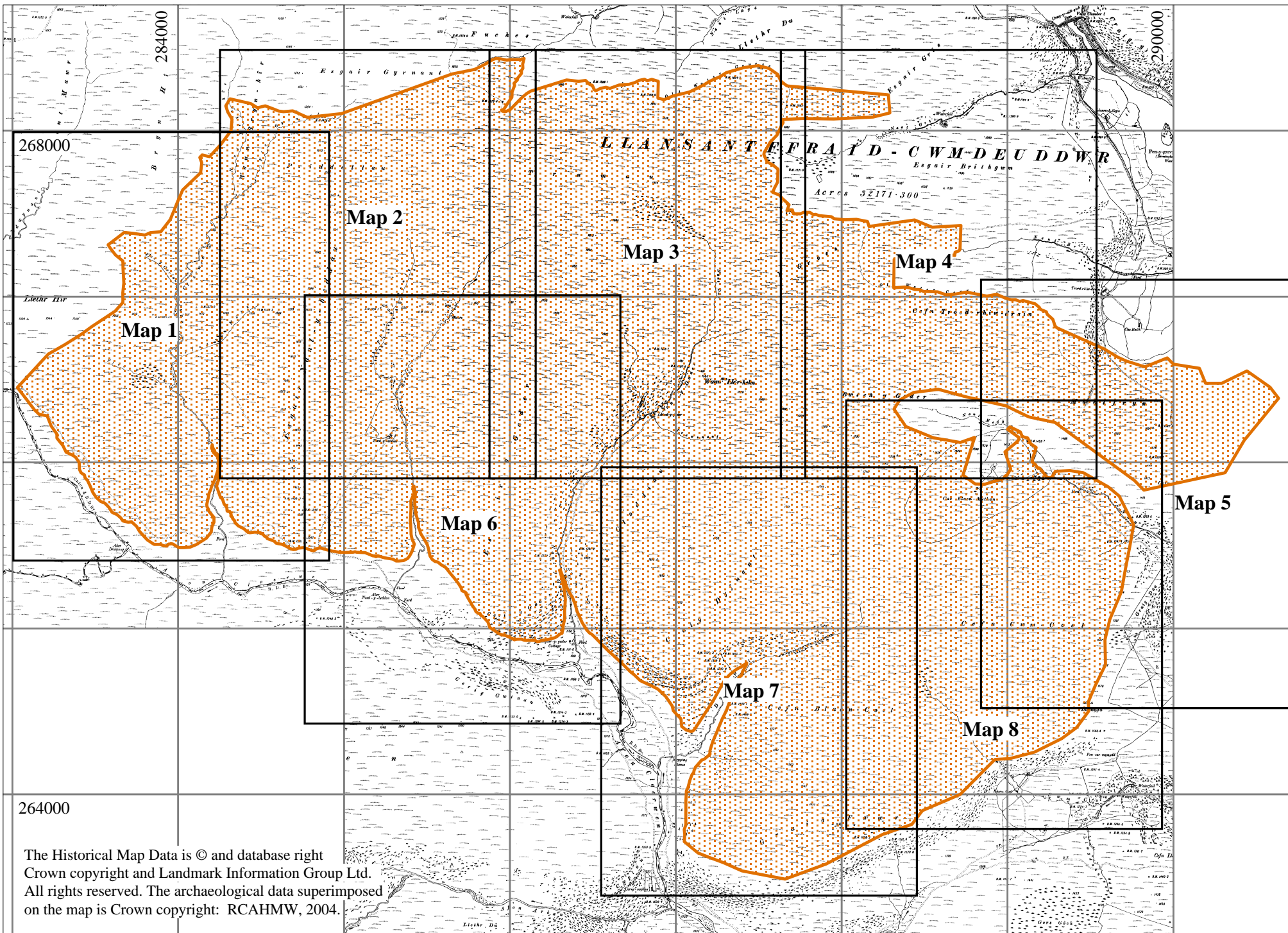
The Historical Map Data is © and database right Crown copyright and Landmark Information Group Ltd. All rights reserved. The archaeological data superimposed on the map is Crown copyright: RCAHMW, 2004.

The site gazetteer itself is a copy of the information in the project database submitted to the RCAHMW in digital format.

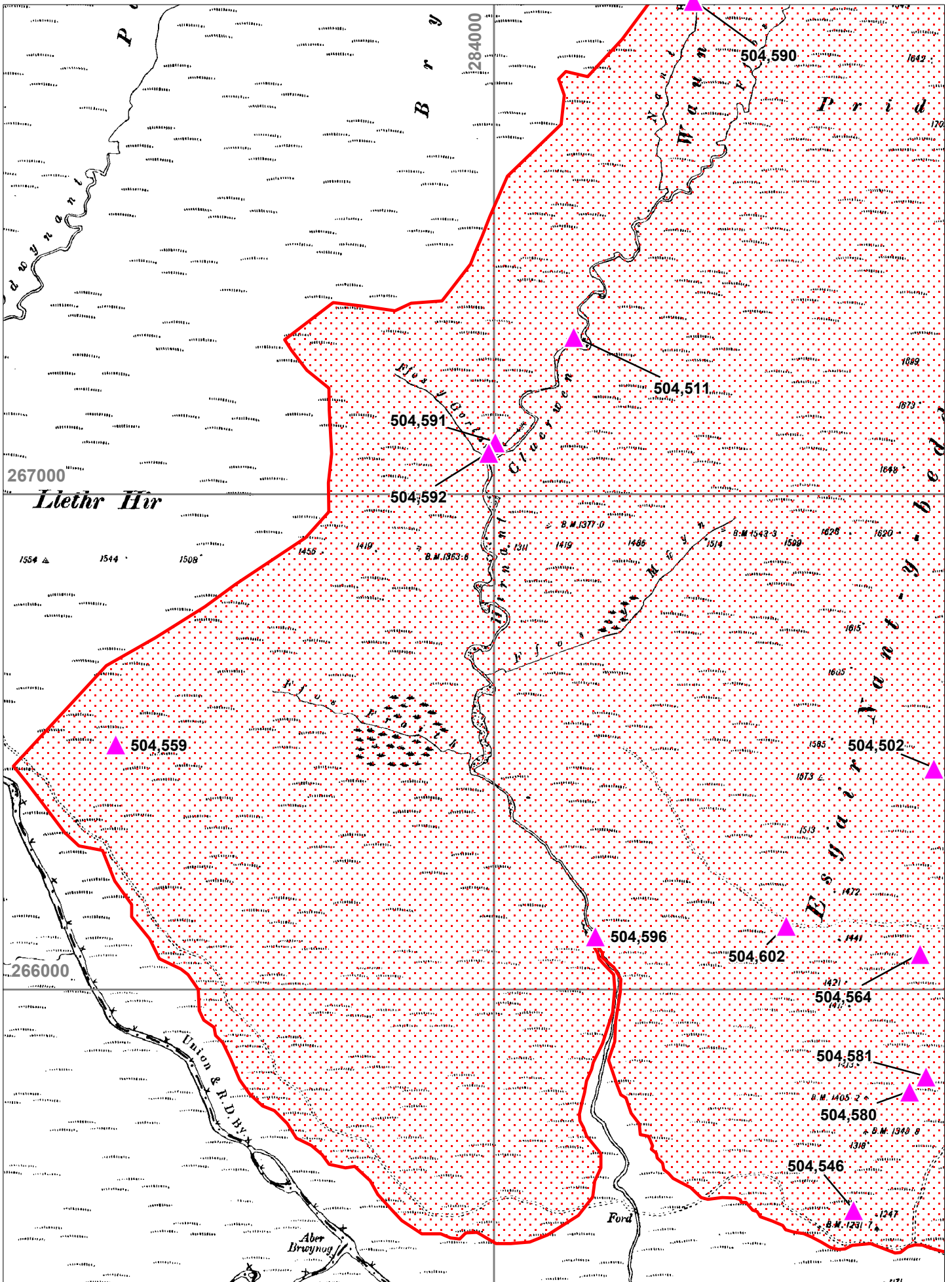
Jenny Hall & Paul Sambrook

Trysor

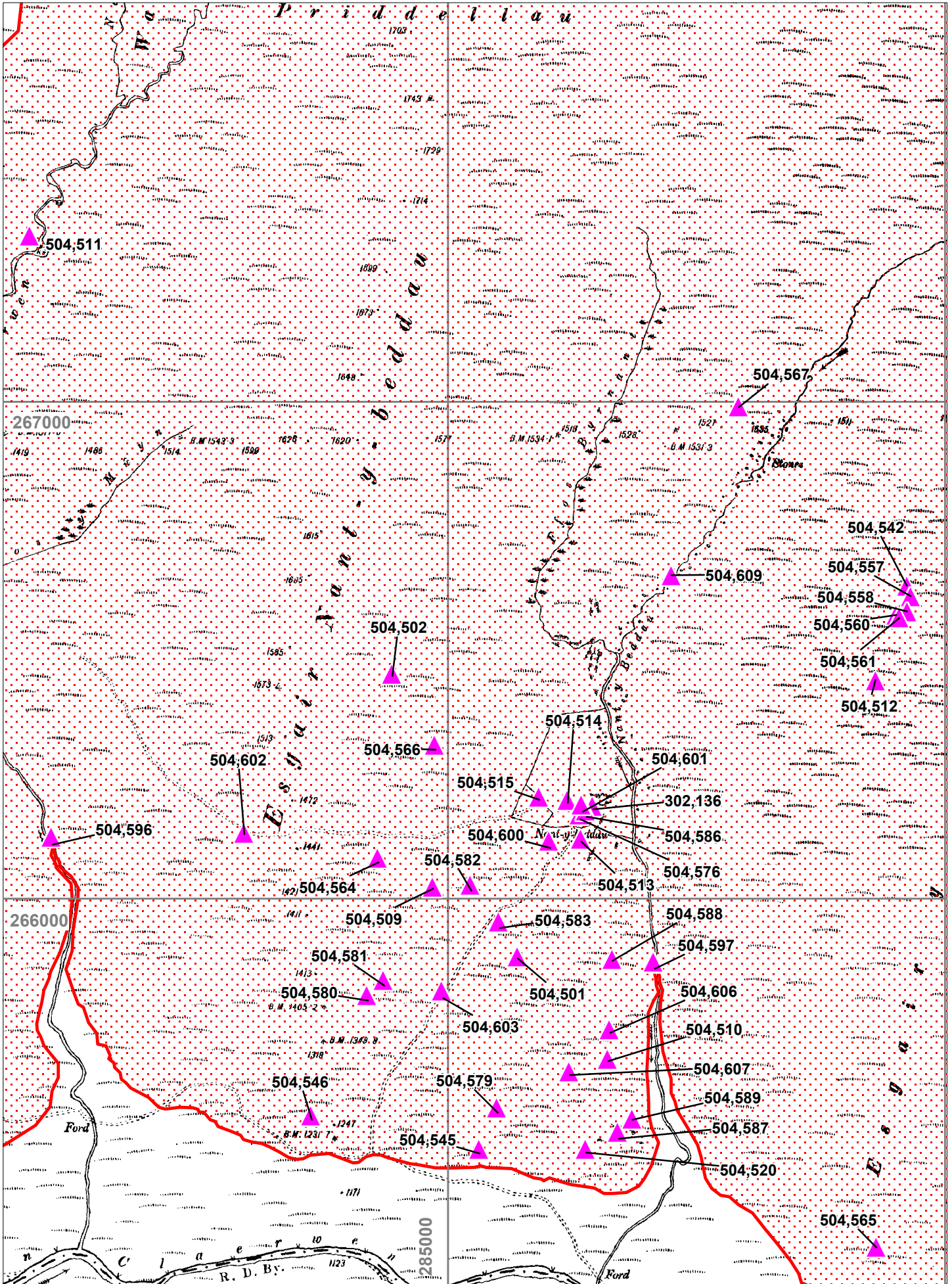
December 2009



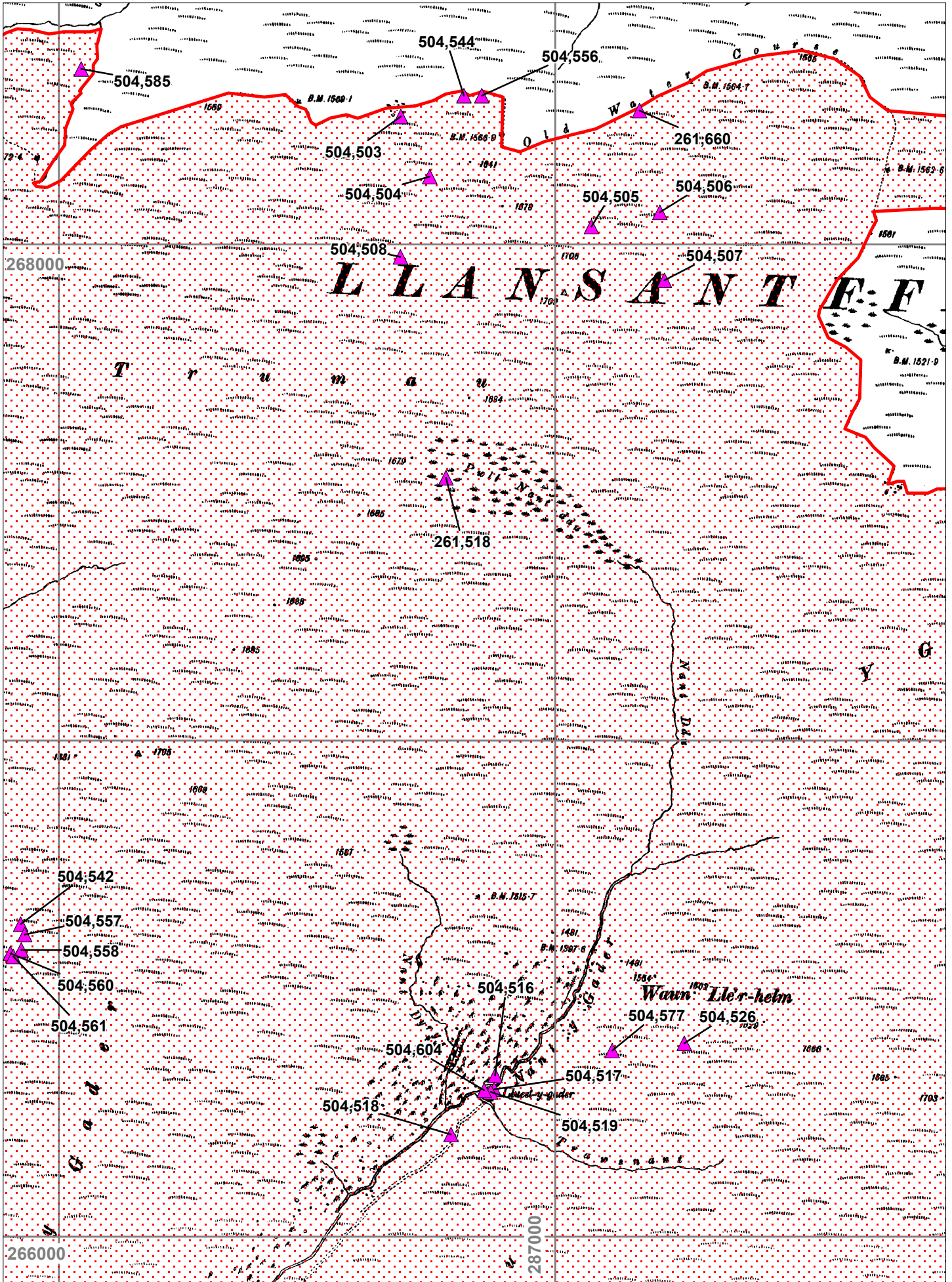
The Historical Map Data is © and database right
 Crown copyright and Landmark Information Group Ltd.
 All rights reserved. The archaeological data superimposed
 on the map is Crown copyright: RCAHMW, 2004.



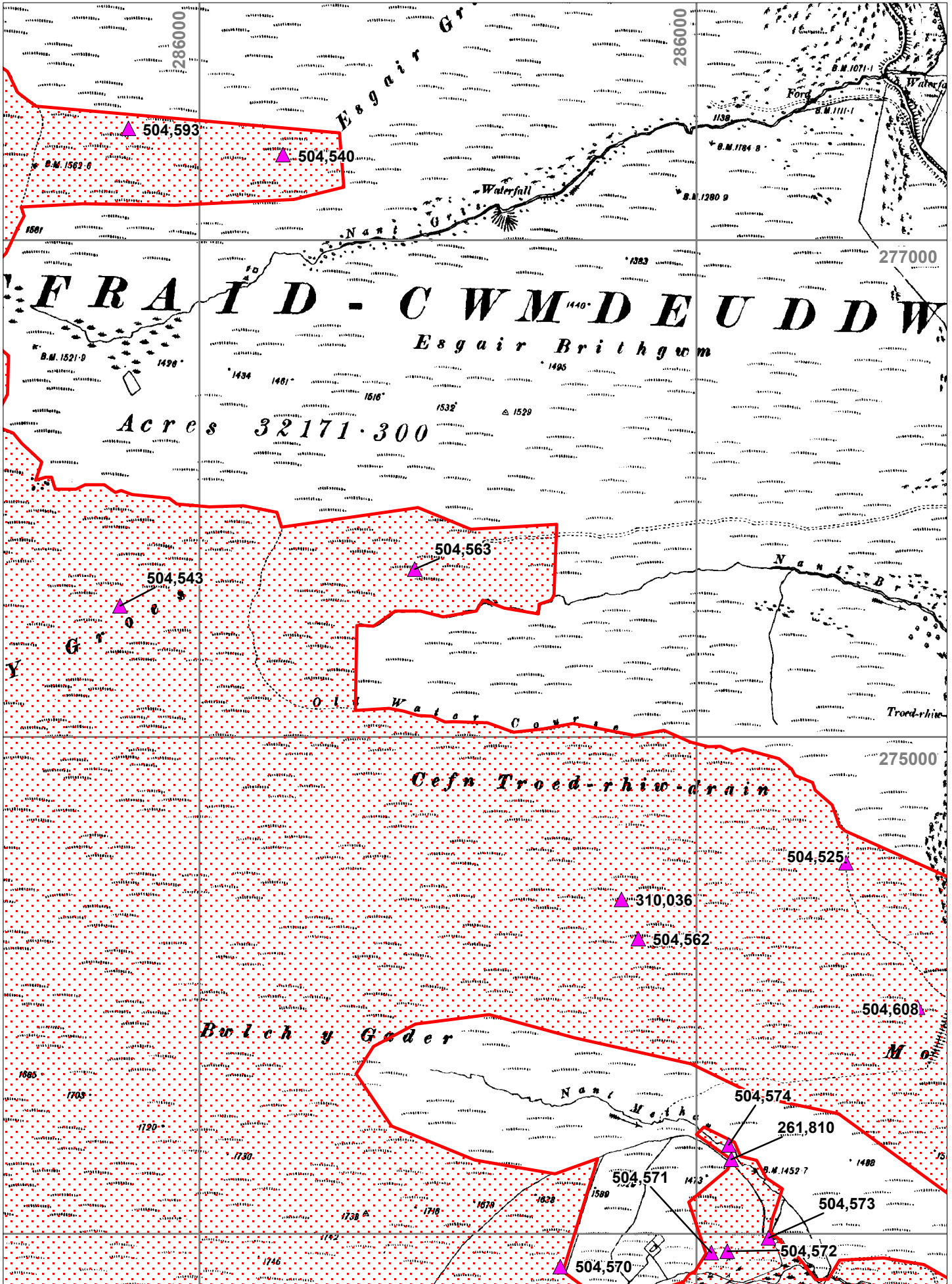
The Historical Map Data is © and database right Crown copyright and Landmark Information Group Ltd. All rights reserved. The archaeological data superimposed on the map is Crown copyright: RCAHMW, 2004.



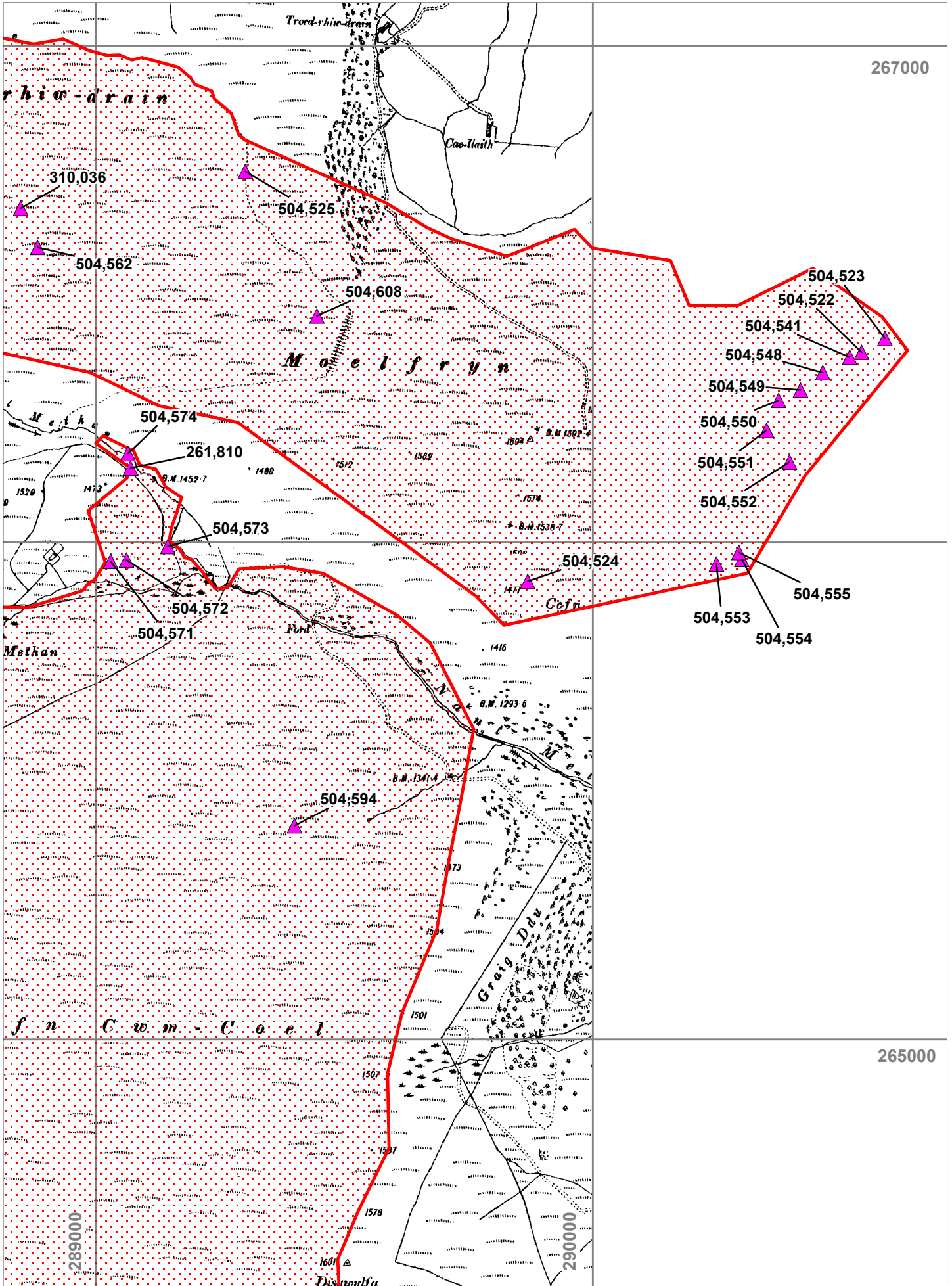
The Historical Map Data is © and database right Crown copyright and Landmark Information Group Ltd.



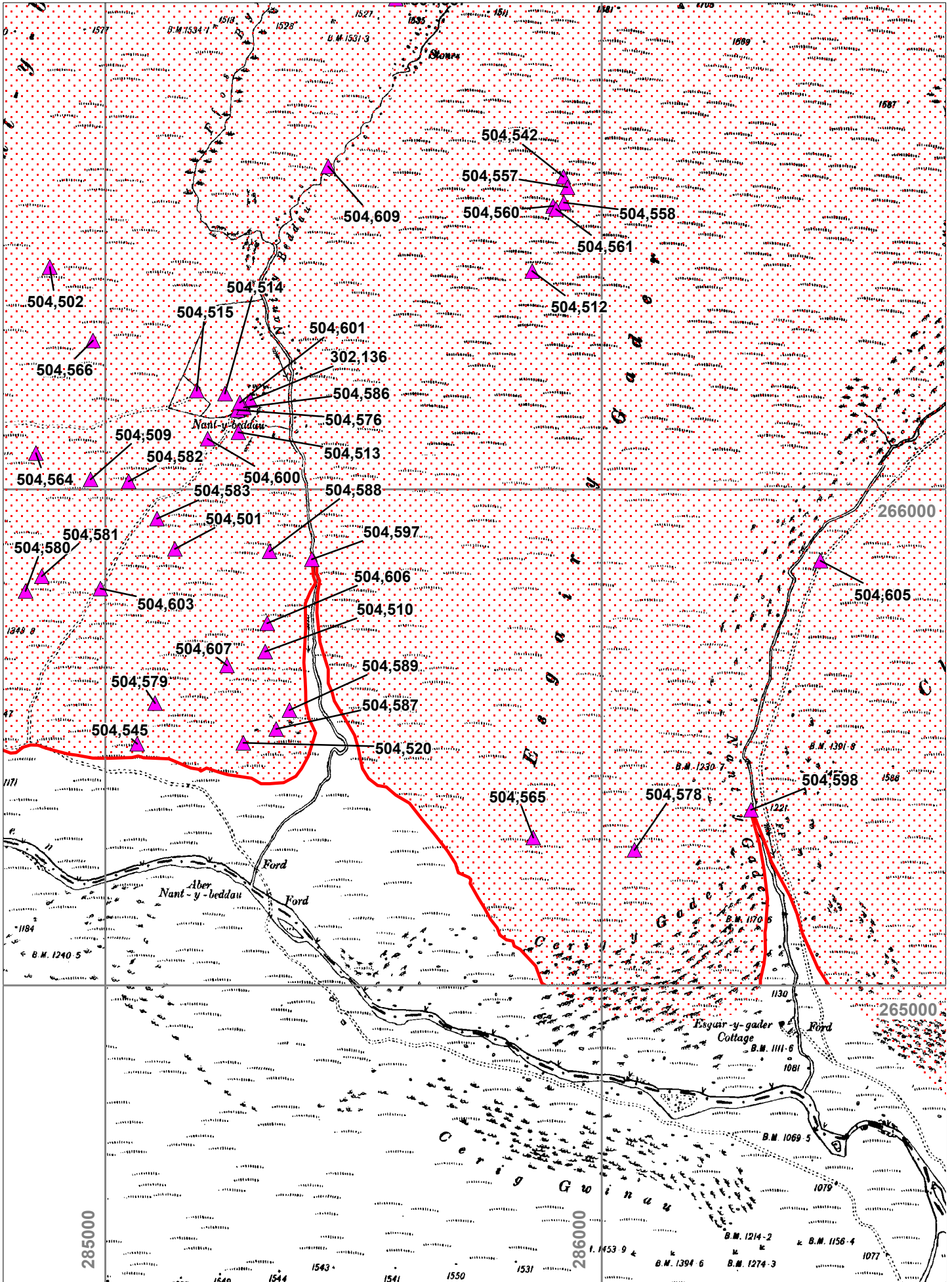
The Historical Map Data is © and database right Crown copyright and Landmark Information Group Ltd.



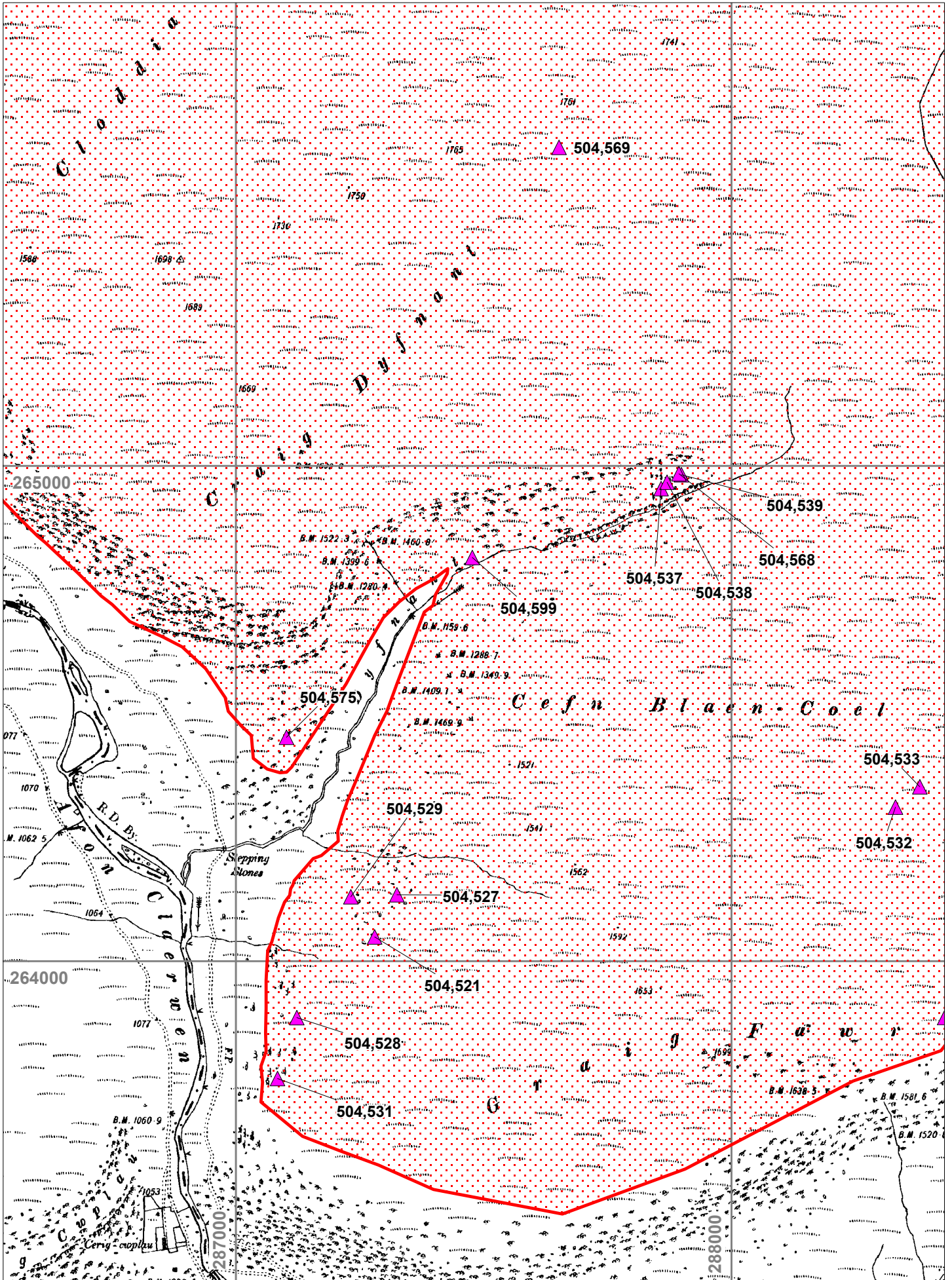
The Historical Map Data is © and database right Crown copyright and Landmark Information Group Ltd.



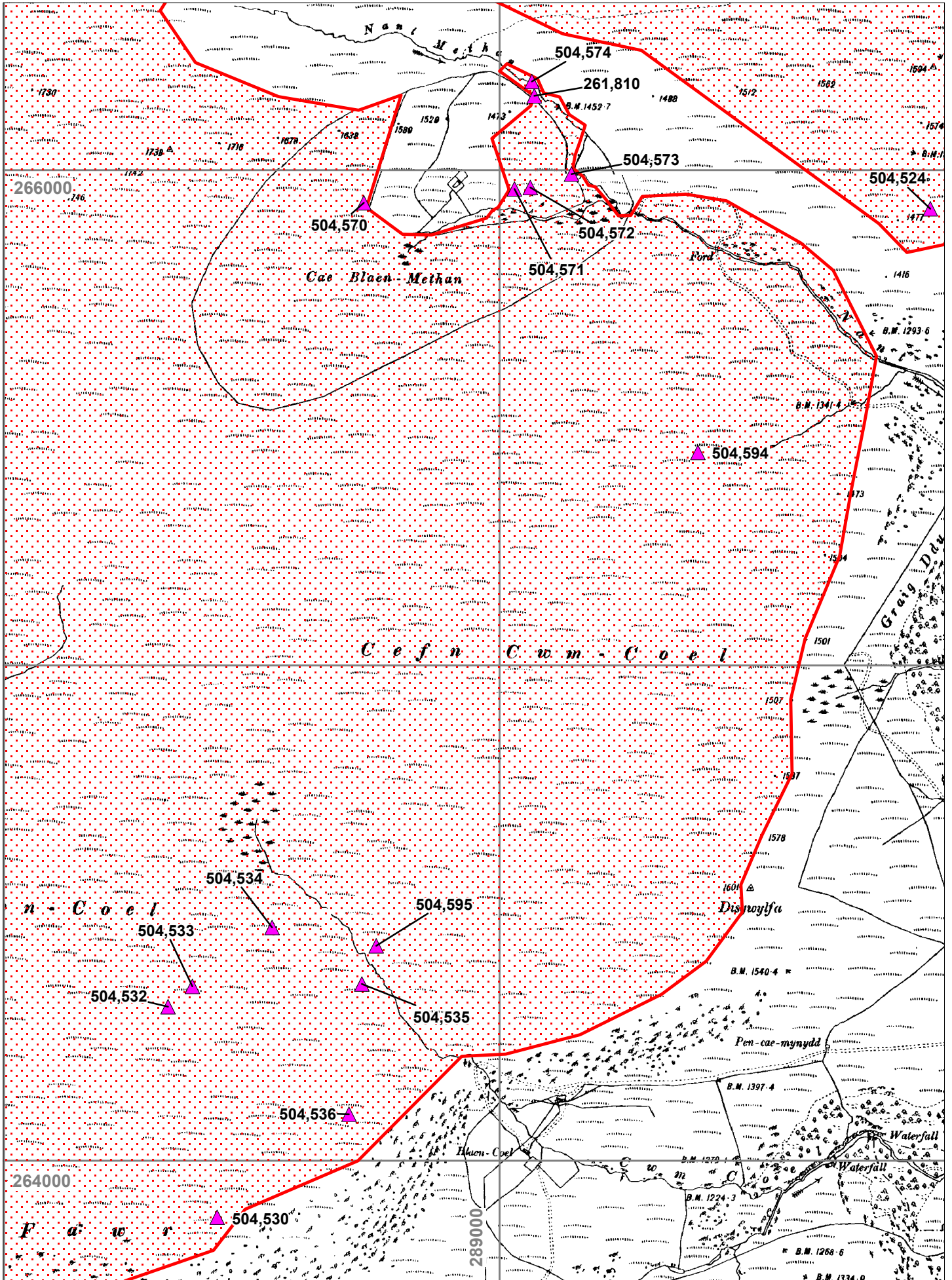
The Historical Map Data is © and database right Crown copyright and Landmark Information Group Ltd.



The Historical Map Data is © and database right Crown copyright and Landmark Information Group Ltd.



The Historical Map Data is © and database right Crown copyright and Landmark Information Group Ltd.



The Historical Map Data is © and database right Crown copyright and Landmark Information Group Ltd.

Site Gazetteer

NPRN: 261518

PWLL NANT DDU ENVIRONMENTAL
SITE

ENVIRONMENTAL SITE

NGR: SN86786753 Grid reference taken at centre of site **Altitude:** 509
Period: General **Broadclass:** Unassigned
Form: Landform **Condition:** U
Site Status:
Description: Pollen sampling site (Caseldine, A 1990, 134). (RSJ 2000)

SMR PRN: CPAT 58791

Relationships:

Photographs:

Visited on:

NPRN: 261660

LLETHR DU WATERCOURSE

LEAT

NGR: SN87176827 Grid reference taken at point along linear site **Altitude:** 480
Period: Post Medieval **Broadclass:** Water Supply and Drainage
Form: Earthwork **Condition:** V
Site Status:
Description: Line of old water course. E / W orientation, along Llethr Du slope. Varies from 1 - 2 m in width. Bank 0.3m-0.5m high. Ditch on S side. Related to Cwm Elan Lead Mine(RSJ 2000).

SMR PRN: CPAT 56181

Relationships:

Photographs:

Associated with 504544
Associated with 504556

Visited on:

NPRN: 261810

CAE BLAENMETHAN, SHED

SHEEP DIP

NGR: SN89076615 Grid reference taken at centre of site **Altitude:** 448

Period: Modern **Broadclass:** Agriculture and Subsistence

Form: Building **Condition:** B

Site Status:

Description: Site of corrugated tin shed, still in use as storage as well as accompanying sheep fold area. Approx. 8m x 4m in extent. Likely 20th century structure (RSJ 2000)

Fields Amended: Land_Use, Short text, Condition, Type changed AGRICULTURAL BUILDING, Period changed from Post Medieval, Site name changed from CAE BLAEN METHIN SHED

The shed houses a sunken, concrete sheep dip that was fed from water diverted from the Nant Methan via a small sluice or water control NPRN 504574. The sheep dip appears to be no longer used although the building is intact. J.J. Hall, Trysor, 12 December 2009

SMR PRN:

Relationships:

Photographs:

Visited on:

NPRN: 302136

NANTYBEDDAU, FARMHOUSE

FARMHOUSE

NGR: SN8529266180 Grid reference taken at centre of site **Altitude:** 415

Period: Post Medieval **Broadclass:** Domestic

Form: Building **Condition:** A

Site Status:

Description: An isolated sheep farm with a late-19th-century farmhouse of central-entry type with adjacent ruined range.

Fields amended: NGR from SN85276615, Condition, Land_Use, UPD_On changed from 11/10/2005, Updater from RC_, Altitude, Short text

The farmhouse at Nantybeddau is still occupied. J.J. Hall, Trysor, 6 December 2009

SMR PRN:

Relationships:

Photographs:

Visited on: Field Observation 27-Sep-2009 TR JJH

NPRN: 310036

CEFN TROEDRHIW-DRAIN CIST

CIST

NGR: SN8884966673 Grid reference taken at centre of site **Altitude:** 497**Period:** Bronze Age **Broadclass:** Religious Ritual and Funerary**Form:** Other Structure **Condition:** C**Site Status:** SAM**Description:** Burial cist, probably dating from the Bronze Age. Stone built subrectangular cist measuring about 0.9m by 0.75m, cist described as lying open. Source: Cadw Schedule description January 2004. 2004.01.03/RCAHMW/SLE

Fields amended: NGR from SN888666, altitude, form1, condition, Land_use, PRN, Trust

The cist is as described above, lying on the baulk between two peat cuttings. It was overgrown with purple moor grass and reeds when visited in September 2009 and hard to find. The cist is defined by upright slabs, the two parallel shorter ones aligned east-west inserted between the longer ones aligned north-south. J.J. Hall, Trysor, 1 December 2009

SMR PRN: CPAT 5177**Relationships:****Photographs:**

ELNS2009_033	10/09/2009	Cist, looking south.
ELNS2009_035	10/09/2009	Cist, looking south.
ELNS2009_031	10/09/2009	Cist, looking east.
ELNS2009_034	10/09/2009	Detail of cist.
ELNS2009_030	10/09/2009	Cist, looking north.
ELNS2009_032	10/09/2009	Cist, looking west.

Visited on: Field Observation 10-Sep-2009 TR JJH**NPRN:** 504501

NANTYBEDDAU, PEAT CUTTING AREA II

PEAT WORKINGS

NGR: SN8514065880 Grid reference taken at a central point within extensive site **Altitude:** 432**Period:** Post Medieval **Broadclass:** Industrial**Form:** Earthwork **Condition:** C**Site Status:****Description:** An area of peat cuttings covering an area of at least 115m northeast to southwest by 60m. When visited in September 2009 the area was used for rough grazing and the vegetation cover was grass and reeds. J.J. Hall, Trysor, 8 December 2009**SMR PRN:****Relationships:****Photographs:****Visited on:** Field Observation 28-May-2009 TR JJH

NPRN: 504502

NANTYBEDDAU, PEAT CUTTING AREA III PEAT WORKINGS

NGR: SN8488866448 Grid reference taken at a central point within extensive site **Altitude:** 466

Period: Post Medieval **Broadclass:** Industrial

Form: Earthwork **Condition:** C

Site Status:

Description: A linear peat cutting, at least 185m northeast to southwest by 10m. When visited in September 2009 the area was used for rough grazing and the vegetation cover was purple moor grass. J.J. Hall, Trysor, 8 December 2009

SMR PRN:

Relationships:

Photographs:

Visited on:

NPRN: 504503

TRUMAU, QUARRY QUARRY

NGR: SN8668968258 Grid reference taken at centre of site **Altitude:** 484

Period: Post Medieval? **Broadclass:** Industrial

Form: Earthwork **Condition:** C

Site Status:

Description: A small quarry into a natural outcrop. J.J. Hall, Trysor, 24 November 2009

SMR PRN:

Relationships:

Photographs:

Visited on:

NPRN: 504504

TRUMAU, PEAT CUTTING II PEAT CUTTING

NGR: SN8674768137 Grid reference taken at centre of site **Altitude:** 509

Period: Post Medieval? **Broadclass:** Industrial

Form: Earthwork **Condition:** C

Site Status:

Description: A peat cutting, approximately 100m north northeast to south southwest by 20m wide and up to 0.60m deep. When visited in June 2009 the area was used for rough grazing and the vegetation cover was grass. J.J. Hall, Trysor, 30 May 2009

SMR PRN:

Relationships:

Photographs:

Visited on: Field Observation 28-May-2009 TR JJH

NPRN: 504505

TRUMAU, PEAT CUTTING IV

PEAT CUTTING

NGR: SN8707368036 Grid reference taken at centre of site **Altitude:** 516
Period: Post Medieval? **Broadclass:** Industrial
Form: Earthwork **Condition:** B

Site Status:

Description: A peat cutting, approximately 175m north northeast to south southwest by 20m wide and up to 0.60m deep. When visited in June 2009 the area was used for rough grazing and the vegetation cover was grass. J.J. Hall, Trysor, 30 May 2009

SMR PRN:

Relationships: **Photographs:**
 ELNS2009_001 28/05/2009 Peat cutting , looking northeast.

Visited on: Field Observation 28-May-2009 TR JJH

NPRN: 504506

TRUMAU, PEAT CUTTING III

PEAT CUTTING

NGR: SN8721168065 Grid reference taken at centre of site **Altitude:** 511
Period: Post Medieval? **Broadclass:** Industrial
Form: Earthwork **Condition:** B

Site Status:

Description: A peat cutting, approximately 150m north northeast to south southwest by 20m wide with additional areas to the west, and up to 0.80m deep. When visited in June 2009 the area was used for rough grazing and the vegetation cover was grass. J.J. Hall, Trysor, 30 May 2009

SMR PRN:

Relationships: **Photographs:**

Visited on: Field Observation 28-May-2009 TR JJH

NPRN: 504507

TRUMAU, PEAT CUTTING I

PEAT CUTTING

NGR: SN8722067928 Grid reference taken at centre of site **Altitude:** 514
Period: Post Medieval? **Broadclass:** Industrial
Form: Earthwork **Condition:** B

Site Status:

Description: A peat cutting, approximately 140m east northeast to west southwest by 8m wide and up to 1m deep. When visited in June 2009 the area was used for rough grazing and the vegetation cover was grass. J.J. Hall, Trysor, 30 May 2009

SMR PRN:

Relationships: **Photographs:**
 ELNS2009_002 28/05/2009 Peat cutting , looking east.

Visited on: Field Observation 28-May-2009 TR JJH

NPRN: 504508

TRUMAU, PEAT CUTTING V

PEAT CUTTING

NGR: SN8668867975 Grid reference taken at centre of site

Altitude: 523

Period: Post Medieval?

Broadclass: Industrial

Form: Earthwork

Condition: B

Site Status:

Description: A peat cutting, approximately 60m northeast to southwest by 8m wide and up to 0.50m deep. When visited in June 2009 the area was used for rough grazing and the vegetation cover was grass. J.J. Hall, Trysor, 30 May 2009

SMR PRN:

Relationships:

Photographs:

Visited on: Field Observation

28-May-2009

TR

JJH

NPRN: 504509

NANTYBEDDAU, PEAT CUTTING AREA I

PEAT WORKINGS

NGR: SN8497066020 Grid reference taken at a central point within extensive site

Altitude: 441

Period: Post Medieval

Broadclass: Industrial

Form: Earthwork

Condition: C

Site Status:

Description: An area of peat cuttings covering an area of at least 170m northeast to southwest by 43m. When visited in September 2009 the area was used for rough grazing and the vegetation cover was grass. J.J. Hall, Trysor, 8 December 2009

SMR PRN:

Relationships:

Photographs:

Visited on:

NPRN: 504510

NANTYBEDDAU, QUARRY IV

QUARRY

NGR: SN8532265673 Grid reference taken at centre of site

Altitude: 399

Period: Post Medieval

Broadclass: Industrial

Form: Earthwork

Condition: C

Site Status:

Description: J.J. Hall, Trysor, 8 December 2009

SMR PRN:

Relationships:

Photographs:

Visited on:

NPRN: 504511

HIRNANT CLAERWEN, STRUCTURE LONG HUT

NGR: SN8416167319 Grid reference taken at centre of site **Altitude:** 411

Period: Medieval?;Post Medieval? **Broadclass:** Domestic

Form: Ruin **Condition:** D

Site Status:

Description: This feature is named as a sheep fold shown on 1st and 2nd edition Ordnance Survey maps but when visited during Uplands Survey in September 2009 the structure was seen to be a long hut measuring 11m northeast to southwest by 5m. The walls were up to 1m wide and 0.5m high. It was divided into two cells, the one at the northeastern end was slightly larger measuring 5.5m northeast to southwest by 3.5m internally. The southwestern one was 3m northeast to southwest by 3.5m internally. No entrances were visible. Vegetation cover was grass and reeds. J.J. Hall, Trysor, 30 May 2009

SMR PRN: CPAT 53026

Relationships:

Photographs:

ELNS2009_060 29/09/2009 Long hut, looking northeast.

ELNS2009_061 29/09/2009 Long hut, looking east.

Visited on: Field Observation 29-Sep-2009 TR JJH

NPRN: 504512

ESGAIR Y GADAIR, RAIN GAUGE RAIN GAUGE

NGR: SN8586266450 Grid reference taken at centre of site **Altitude:** 507

Period: Modern **Broadclass:** Education

Form: Other Structure **Condition:** C

Site Status:

Description: A rain gauge shown on modern Ordnance Survey maps, when visited in July 2009 it was seen as a square enclosure defined by wooden posts and wire strands. It measured 6m by 6m with no entrance into it. The general vegetation in the locality was purple moor grass. J.J. Hall, Trysor, 30 May 2009

SMR PRN:

Relationships:

Photographs:

ELNS2009_007 15/07/2009 Rain gauge enclosure, looking south southeast.

Visited on:

NPRN: 504513

NANTYBEDDAU, FARMSTEAD

FARMSTEAD

NGR: SN8526866115 Grid reference taken at a central point within extensive site **Altitude:** 420
Period: Post Medieval **Broadclass:** Agriculture and Subsistence
Form: Complex **Condition:** V

Site Status:

Description: An upland farmstead in a tributary valley, Nantybeddau, on the northern side of the Claerwen valley. It is shown on the 1831 1" to 1 mile Ordnance Survey map. Nantybeddau is shown on the 1841 parish tith map, when it consisted of a house, Cae Bach and Cae Mawr. It was part of the Lewis Lloyd estate and occupied by Noah Edwards. J.J. Hall, Trysor, 30 May 2009

SMR PRN: CPAT 67857

Relationships:

Consists of 504514

Photographs:

Visited on: Field Observation 27-Sep-2009 TR JJH

NPRN: 504514

NANTYBEDDAU, FIELD SYSTEM

FIELD SYSTEM

NGR: SN8524166193 Grid reference taken at a central point within extensive site **Altitude:** 422
Period: Post Medieval **Broadclass:** Agriculture and Subsistence
Form: Complex **Condition:** V

Site Status:

Description: A small field system, part of upland farmstead, NPRN 504513. The field system on the tith map of 1841 consisted of only two parcels, a very small field called Cae Bach and a larger one called Cae Mawr. On the 1st edition map of 1891 the field system is shown as one polygonal parcel, on the second edition the polygon was essentially the same but had an internal subdivision at its western corner incorporating building NPRN 504515. The field system measured 245m north-south by 240m. In 2009 the field system was larger with an additional areas of similar size to the south and west of the earlier field system. The newer parcels were defined by post and wire fencing, but the original parcel was defined by an earthwork bank. J.J. Hall, Trysor, 30 May 2009

SMR PRN:

Relationships:

Part of 504513

Photographs:

Visited on: Field Observation 27-Sep-2009 TR JJH

NPRN: 504515

NANTYBEDDAU, BUILDING

BUILDING

NGR: SN8518466199 Grid reference taken at centre of site **Altitude:** 432
Period: Post Medieval **Broadclass:** Unassigned
Form: Ruin **Condition:** C

Site Status:

Description: A building depicted on 1st and 2nd editions of the 1:10560 Ordnance Survey maps of 1891 and 1905. It is shown with in the field system, NPRN 504514, at Nantybeddau with trackway NPRN 504602, running directly to it. The building is now a ruin, with walls no higher than 0.50m, standing within a fenced paddock at Nantybeddau. It measures approximately 7m northeast to southwest by 4m. J.J. Hall, Trysor, 30 May 2009

SMR PRN: CPAT 67859

Relationships:

Photographs:

Visited on: Field Observation 27-Sep-2009 TR JJH

NPRN: 504516

LLUEST Y GADAIR, STRUCTURE

BUILDING

NGR: SN8687966325 Grid reference taken at centre of site **Altitude:** 411
Period: Post Medieval **Broadclass:** Unassigned
Form: Ruin **Condition:** C

Site Status:

Description: A small drystone structure measuring 4.25m west northwest to east southeast by 3.5m and the walls stood up to 1.2m high in September 2009. Building seen on Google Earth and modern Ordnance Survey mapping. When visited in September 2009 the area was used for rough grazing and the vegetation cover was grass and nettles. J.J. Hall, Trysor, 30 May 2009

SMR PRN:

Relationships:

Photographs:

ELNS2009_036 10/09/2009 Building, looking southwest.
 ELNS2009_037 10/09/2009 Building, looking south southeast, with NPRN 504517 in the background.

Visited on: Field Observation 10-Sep-2009 TR JJH

NPRN: 504517

LLUEST Y GADAIR, BUILDING HOUSE

NGR: SN8687766297 Grid reference taken at centre of site **Altitude:** 408

Period: Post Medieval **Broadclass:** Domestic

Form: Ruin **Condition:** C

Site Status:

Description: Building on 1st and 2nd edition Ordnance Survey mapping. J.J. Hall, Trysor, 30 May 2009

SMR PRN:

Relationships:

Photographs:

ELNS2009_042	10/09/2009	Detail of roof slate.
ELNS2009_040	10/09/2009	House, looking west northwest.
ELNS2009_039	10/09/2009	House, looking west, with building NPRN in the background.
ELNS2009_043	10/09/2009	House, looking south southwest.
ELNS2009_041	10/09/2009	Detail of southeast corner of house showing mortar, looking west.

Visited on:

NPRN: 504518

LLUEST Y GADAIR, WELL WELL

NGR: SN8679066206 Grid reference taken at centre of site **Altitude:** 413

Period: Post Medieval? **Broadclass:** Water Supply and Drainage

Form: Documents **Condition:** U

Site Status:

Description: A well shown on 1st edition 1:10560 Ordnance Survey map of 1891 but no longer shown on the 2nd edition of 1905. When visited during Upland Survey in 2009 no well or spring was found but the area was overgrown with purple moor grass which made identification of smaller features difficult. J.J. Hall, Trysor, 30 May 2009

SMR PRN: CPAT 68847

Relationships:

Photographs:

Visited on:

NPRN: 504519

LLUEST Y GADAI, FIELD SYSTEM

FIELD SYSTEM

NGR: SN8687066292 Grid reference taken at a central point within extensive site **Altitude:** 415
Period: Post Medieval **Broadclass:** Agriculture and Subsistence
Form: Complex **Condition:** D

Site Status:

Description: A field system shown on the 1st and 2nd edition Ordnance Survey maps of 1891 and 1905. It measures 31m east to west by 26m north to south and consists of three small fields with building NPRN 504517 to its northeast. When visited during Uplands Survey in 2009, the field system was no longer apparent and the area was overgrown. J.J. Hall, Trysor, 30 May 2009

SMR PRN:

Relationships:

Photographs:

Visited on: Field Observation 10-Sep-2009 TR JJH

NPRN: 504520

NANTYBEDDAU, QUARRY II

QUARRY

NGR: SN8527865489 Grid reference taken at centre of site **Altitude:** 380
Period: Modern **Broadclass:** Industrial
Form: Earthwork **Condition:** A

Site Status:

Description: A modern quarry on the north side of the 20th century Clærwen road, NPRN 504545. It measured approximately 50m east to west by 50m, and appeared to still be used for road metalling. J.J. Hall, Trysor, 30 May 2009

SMR PRN:

Relationships:

Photographs:

Visited on: Field Observation 26-Sep-2009 TR JJH

NPRN: 504521

GRAIG FAWR, DAM

DAM

NGR: SN8728064049 Grid reference taken at centre of site **Altitude:** 424**Period:** Modern **Broadclass:** Water Supply and Drainage**Form:** Other Structure **Condition:** B**Site Status:**

Description: A concrete dam across a minor mountain stream, creating a small pool. The dam is intact and the pool appears to be under management, having relatively had a plastic/fabric liner laid at its bottom. The dam is c.12m long north-south, and up to 2m high. An overflow outlet is located just to the south of centre of the dam and on its western side, to the south of the stream, is a manhole covering a small concrete tank. The purpose of the dam is unknown. J.J. Hall, Trysor, 6 September 2009.

SMR PRN:**Relationships:****Photographs:**

ELNS2009_011 06/09/2009 Small dam, looking west.

ELNS2009_010 06/09/2009 Small dam, looking northeast.

Visited on: Field Observation 06-Sep-2009 TR JJH**NPRN:** 504522

MOELFRYN, ENCLOSURE II

EXPERIMENTAL PLOT

NGR: SN9054166383 Grid reference taken at centre of site **Altitude:** 450**Period:** Modern **Broadclass:** Education**Form:** Other Structure **Condition:** A**Site Status:**

Description: A small, square enclosure defined by a post and wire fence with a wooden rail around the top. It measured 4m by 4m with no entrance into it. The general vegetation in the locality was grassland. J.J. Hall, Trysor, 1 December 2009

SMR PRN:**Relationships:****Photographs:****Visited on:** Field Observation 16-Jul-2009 TR JJH**NPRN:** 504523

MOELFRYN, ENCLOSURE III

EXPERIMENTAL PLOT

NGR: SN9058866411 Grid reference taken at centre of site **Altitude:** 456**Period:** Modern **Broadclass:** Education**Form:** Other Structure **Condition:** A**Site Status:**

Description: A small, square enclosure defined by a post and wire fence with a wooden rail around the top. It measured 4m by 4m with no entrance into it. The general vegetation in the locality was grassland. J.J. Hall, Trysor, 1 December 2009

SMR PRN:**Relationships:****Photographs:****Visited on:** Field Observation 16-Jul-2009 TR JJH

NPRN: 504524
MOELFRYN, STONE SPREAD

STONE SPREAD

MOELFRYN, STONE SPREAD

NGR: SN8986965922 Grid reference taken at centre of site **Altitude:** 461
Period: Post Medieval?;Modern? **Broadclass:** Unassigned
Form: Earthwork **Condition:** C

Site Status:

Description: A very rough collection of quartz blocks covering an area 3m by 2m and 0.15m high. It may be a scattered marker cairn, possibly natural. When visited in July 2009 the area was used for rough grazing and the vegetation cover was grass. J.J. Hall, Trysor, 24 November 2009

SMR PRN:

Relationships: **Photographs:**
ELNS2009_004 16/07/2009 Stone spread, looking south.

Visited on:

NPRN: 504525
CEFN TROEDRHIW DRAIN, STONE PILE MARKER CAIRN?

NGR: SN8930166747 Grid reference taken at centre of site **Altitude:** 480
Period: Modern? **Broadclass:** Unassigned
Form: Earthwork **Condition:** B

Site Status:

Description: A low marker cairn, 1m in diameter and 0.15m high. When visited in July 2009 the area was used for rough grazing and the vegetation cover was grass. J.J. Hall, Trysor, 24 November 2009

SMR PRN:

Relationships: **Photographs:**
ELNS2009_005 16/07/2009 Marker cairn, looking southwest, line of leat NPRN 261660 in background.

Visited on:

NPRN: 504526

WAUN LLE'R HELM, PEAT CUTTING

PEAT WORKINGS

AREA

NGR: SN8726066390 Grid reference taken at a central point within extensive site

Altitude: 494

Period: Post Medieval

Broadclass: Industrial

Form: Earthwork

Condition: C

Site Status:

Description: J.J. Hall, Trysor, 8 December 2009

SMR PRN:

Relationships:

Photographs:

Visited on:

NPRN: 504527

GRAIG FAWR, CULTIVATION RIDGES

CULTIVATION MARKS

NGR: SN8732564134 Grid reference taken at a central point within extensive site

Altitude: 431

Period: Medieval?;Post Medieval? **Broadclass:** Agriculture and Subsistence

Form: Earthwork

Condition: C

Site Status:

Description: An area of former cultivation, now overgrown with purple moor grass and invisible on the ground but clearly visible on modern aerial photographs. The area is at most 140m north-south by 200m east-west. When visited in September 2009 the area was used for rough grazing and the vegetation cover was grass or purple moor grass. J.J.Hall, Trysor, 6 September 2009.

SMR PRN:

Relationships:

Photographs:

Visited on: Field Observation

06-Sep-2009

TR

JJH

NPRN: 504528

GRAIG FAWR, TRACKWAY I

TRACKWAY

NGR: SN8712363886 Grid reference taken at point along linear site**Altitude:** 396**Period:** Post Medieval**Broadclass:** Transport**Form:** Earthwork**Condition:** C**Site Status:**

Description: An old trackway, now apparently disused, which climbs a steep slope overlooking the Claerwen valley. It is possible that its lower section is drowned by the Claerwen reservoir, but it can be traced to the east of the reservoir for c.350m, firstly running southeastwards, before turning to the northeast and running up the steep valley slope onto more level ground in the vicinity of an area of cultivation (NPRN 504527). It peters out at its northern end. J.J. Hall, Trysor, 6 September 2009.

SMR PRN:**Relationships:****Photographs:****Visited on:** Field Observation 06-Sep-2009

TR

JJH

NPRN: 504529

GRAIG FAWR, TRACKWAY II

TRACKWAY

NGR: SN8723264130 Grid reference taken at point along linear site**Altitude:** 409**Period:** Post Medieval**Broadclass:** Transport**Form:** Earthwork**Condition:** C**Site Status:**

Description: An old trackway which climbs a steep slope overlooking the Claerwen valley. It can be traced for c.150m running northeastwards up the valley side to the east of the Claerwen reservoir, leading onto a flatter area which has been cultivated in the past (NPRN 504527). J.J. Hall, Trysor, 6 September 2009.

SMR PRN:**Relationships:****Photographs:****Visited on:** Field Observation 06-Sep-2009

TR

JJH

NPRN: 504530

GRAIG FAWR, PEAT CUTTING

PEAT CUTTING

NGR: SN8843063886 Grid reference taken at centre of site**Altitude:** 500**Period:** Post Medieval**Broadclass:** Industrial**Form:** Earthwork**Condition:** C**Site Status:**

Description: An irregular, linear peat cutting in a small raised bog. Approximately 0.18ha of peat has been cut. When visited in September 2009 the area was used for rough grazing and the vegetation cover was purple moor grass. J.J. Hall, Trysor, 6 September 2009.

SMR PRN:**Relationships:****Photographs:****Visited on:** Field Observation 06-Sep-2009

TR

JJH

NPRN: 504531

GRAIG FAWR, TRACKWAY III

TRACKWAY

NGR: SN8708463763 Grid reference taken at point along linear site

Altitude: 384

Period: Modern? **Broadclass:** Transport

Form: Earthwork **Condition:** C

Site Status:

Description: An old trackway which runs up a steep slope just to the east of the Claerwen reservoir. It runs northwards for c.90m and then returns south-southeastwards for c.90m. It appears to have been cut into the slope and may be associated with the construction phase of the nearby Claerwen dam. Just to the south of its southern end is an area where fragments of concrete on the hillslope suggest that activity related to the dam. J.J. Hall, Trysor, 6 September 2009.

SMR PRN:

Relationships:

Photographs:

Visited on: Field Observation 06-Sep-2009 TR JJH

NPRN: 504532

CEFN BLAEN COEL, LONG HUT

LONG HUT

NGR: SN8833164311 Grid reference taken at centre of site

Altitude: 491

Period: Medieval?;Post Medieval? **Broadclass:** Domestic

Form: Earthwork **Condition:** C

Site Status:

Description: A rectilinear long hut, reduced to its wall bases, which are less than 0.25m high and c.1m wide. The wall bases are composed of grassed over banks with stone slabs protruding through the grass or still exposed. Presumably a clom structure stood on this foundation. The structure measures 8m southwest-northeast x 4m and appears to sit on a platform terraced into the slope. Presumably this long hut is associated with nearby sunken shelter NPRN 504533. When visited in September 2009 the area was used for rough grazing and the vegetation cover was grass. J.J. Hall, Trysor, 7 September 2009.

SMR PRN:

Relationships:

Associated with 504533

Photographs:

ELNS2009_013 07/09/2009 Long hut, looking south southwest.
ELNS2009_012 07/09/2009 Long hut, looking east

Visited on: Field Observation 07-Sep-2009 TR JJH

NPRN: 504533

CEFN BLAEN COEL, SUNKEN SHELTER SUNKEN SHELTER

NGR: SN8838064352 Grid reference taken at centre of site **Altitude:** 490

Period: Medieval?;Post Medieval? **Broadclass:** Unassigned

Form: Earthwork **Condition:** C

Site Status:

Description: A well-preserved sunken shelter, now a reed-filled hollow measuring 7m east-southeast to west-southwest x 2m wide and up to 1m deep. Low, broad banks lie to either side of the hollow, parallel to its long axis, measuring 1.5m wide and less than 0.5m high. Evidence of stone revetting is exposed along the internal, lateral sides of the hollow. Presumably this sunken shelter is associated with nearby long hut NPRN 504532. J.J. Hall, Trysor, 7 September 2009.

SMR PRN:

Relationships:

Associated with 504532

Photographs:

ELNS2009_014 07/09/2009 Sunken shelter, looking east.

Visited on: Field Observation 07-Sep-2009 TR JJH

NPRN: 504534

CEFN BLAEN COEL, ENCLOSURE ENCLOSURE

NGR: SN8854164471 Grid reference taken at centre of site **Altitude:** 478

Period: Medieval?;Post Medieval? **Broadclass:** Monument <By Form>

Form: Earthwork **Condition:** C

Site Status:

Description: A probable enclosure, which is estimated to be a little over 0.2ha in area, defined on two sides (north and southwest) by substantial earth banks and ditches, with a weaker bank just visible at its western side. The eastern side of this enclosure, which is either polygonal or trapezoidal in shape, is difficult to define as it is obscured in an area of thick vegetation (purple-moor grass). The southwestern bank is substantial, being 3.5m wide x 0.5m high, whilst the northern bank measures 3m x 0.25m high. Each have a ditch cut along their inner sides, making the purpose of this enclosure difficult to explain. A disturbed area to the west of the centre of the enclosure may be the site of a platform or other feature, but surface evidence was inconclusive. J.J. Hall, Trysor, 6 September 2009.

SMR PRN:

Relationships:

Photographs:

ELNS2009_015 07/09/2009 Enclosure, looking west

ELNS2009_016 07/09/2009 Southernmost bank of enclosure, looking northwest.

Visited on: Field Observation 07-Sep-2009 TR JJH

NPRN: 504535

BLAEN COEL, PEAT CUTTING AREA I

PEAT WORKINGS

NGR: SN8872264357 Grid reference taken at a central point within extensive site **Altitude:** 460**Period:** Post Medieval **Broadclass:** Industrial**Form:** Earthwork **Condition:** C**Site Status:****Description:** A series of peat cuttings within an area approximately 400m east-northeast to west-southwest by 200m, on either side of Nant Cwm Coel. When visited in September 2009 the area was used for rough grazing and the vegetation cover was dense purple moor grass. J.J. Hall, Trysor, 6 September 2009.**SMR PRN:****Relationships:****Photographs:****Visited on:** Field Observation 07-Sep-2009 TR JJH**NPRN:** 504536

CEFN BLAEN COEL, TRACKWAY

TRACKWAY

NGR: SN8869664094 Grid reference taken at point along linear site **Altitude:** 474**Period:** Post Medieval? **Broadclass:** Transport**Form:** Earthwork **Condition:** V**Site Status:****Description:** An old trackway, now rarely used, which runs from a ford above Blaen Coel, westwards across Cefn Blaen Coel, possibly crossing the hill and descending into the Claerwen valley. Intermittent sections can be seen in the field, some well-preserved as an earthwork track, c.2m wide, cut into the hillslope. It is difficult to follow on the ground however, but can be traced reasonably well on modern aerial photographs. J.J. Hall, Trysor, 7 September 2009.**SMR PRN:****Relationships:****Photographs:****Visited on:** Field Observation 07-Sep-2009 TR JJH**NPRN:** 504537

DYFNANT, PLATFORM

PLATFORM

NGR: SN8785864954 Grid reference taken at centre of site **Altitude:** 449**Period:** Medieval?;Post Medieval? **Broadclass:** Monument <By Form>**Form:** Earthwork **Condition:** C**Site Status:****Description:** An earthwork platform on the west side of a stream. Overall the platform measured 8m east to west by 4m. It was cut into the east-facing slope up to 0.5m. When visited in September 2009 the area was used for rough grazing and the vegetation cover was grass. J.J. Hall, Trysor, 24 November 2009**SMR PRN:****Relationships:****Photographs:****Visited on:** Field Observation 09-Sep-2009 TR JJH

NPRN: 504538

DYFNANT, EARTHWORK

SUNKEN SHELTER?

NGR: SN8787064967 Grid reference taken at centre of site**Altitude:** 451**Period:** Medieval?;Post Medieval? **Broadclass:** Unassigned**Form:** Earthwork **Condition:** C**Site Status:****Description:** A linear hollow with a slight bank on one side. It measured 6m north northeast to south southwest by 3.5m. When visited in September 2009 the area was used for rough grazing and the vegetation cover was grass. J.J. Hall, Trysor, 24 November 2009**SMR PRN:****Relationships:****Photographs:**

ELNS2009_017 09/09/2009 Linear hollow, looking west.

Visited on: Field Observation 09-Sep-2009 TR JJH**NPRN:** 504539

DYFNANT, STONE SPREAD

STONE SPREAD

NGR: SN8789964982 Grid reference taken at centre of site**Altitude:** 455**Period:** Medieval?;Post Medieval? **Broadclass:** Unassigned**Form:** Earthwork **Condition:** C**Site Status:****Description:** A rough base or level area created from flat stone slabs about 1m away from the south southeast corner of the long hut NPRN 504568. Overall it measures 2m northeast to southwest by 1.5m. When visited in September 2009 the area was used for rough grazing and the vegetation cover was grass. J.J. Hall, Trysor, 24 November 2009**SMR PRN:****Relationships:****Photographs:**

ELNS2009_018 09/09/2009 Stone spread, looking northeast.

Visited on: Field Observation 09-Sep-2009 TR JJH**NPRN:** 504540

ESGAIR GRIS, CAIRN

CAIRN?

NGR: SN8816868172 Grid reference taken at centre of site**Altitude:** 438**Period:** Bronze Age? **Broadclass:** Religious Ritual and Funerary**Form:** Earthwork **Condition:** C**Site Status:****Description:** A small stone cairn, partially grass-covered. It measures 2m in diameter but only 0.10m high. When visited in July 2009 the area was used for rough grazing. J.J. Hall, Trysor, 24 November 2009**SMR PRN:****Relationships:****Photographs:**

ELNS2009_006 15/07/2009 Grass-covered stone cairn, looking east

Visited on:

NPRN: 504541

MOELFRYN, ENCLOSURE IV

EXPERIMENTAL PLOT

NGR: SN9051766373 Grid reference taken at centre of site **Altitude:** 460
Period: Modern **Broadclass:** Education
Form: Other Structure **Condition:** A

Site Status:

Description: A small, square enclosure defined by a post and wire fence with a wooden rail around the top. It measured 4m by 4m with no entrance into it. The general vegetation in the locality was grassland. J.J. Hall, Trysor, 1 December 2009

SMR PRN:

Relationships:

Photographs:

Visited on: Field Observation 16-Jul-2009 TR JJH

NPRN: 504542

ESGAIR Y GADAIR, ENCLOSURE III

EXPERIMENTAL PLOT

NGR: SN8592366630 Grid reference taken at centre of site **Altitude:** 512
Period: Modern **Broadclass:** Education
Form: Other Structure **Condition:** A

Site Status:

Description: A small, square enclosure defined by a post and wire fence with a wooden rail around the top. It measured 4m by 4m with no entrance into it. The general vegetation in the locality was purple moor grass. J.J. Hall, Trysor, 1 December 2009

SMR PRN:

Relationships:

Photographs:

Visited on: Field Observation 15-Jul-2009 TR JJH

NPRN: 504543

Y GROES, PEAT CUTTING AREA

PEAT WORKINGS

NGR: SN8784067264 Grid reference taken at a central point within extensive site **Altitude:** 490
Period: Post Medieval **Broadclass:** Industrial
Form: Earthwork **Condition:** C

Site Status:

Description: J.J. Hall, Trysor, 8 December 2009

SMR PRN:

Relationships:

Photographs:

Visited on:

NPRN: 504544

LLETHR DU, FOOTBRIDGE II

FOOTBRIDGE

NGR: SN8681668300 Grid reference taken at centre of site **Altitude:** 482
Period: Post Medieval **Broadclass:** Transport
Form: Other Structure **Condition:** C

Site Status:

Description: A small, collapsed, stone footbridge over leat NPRN 261660. Two stone slabs lay within the leat. When visited in July 2009 the area was used for rough grazing and the vegetation cover was grass. J.J. Hall, Trysor, 24 November 2009

SMR PRN:**Relationships:**

Associated with 261660

Photographs:

ELNS2009_008 15/07/2009 Small footbridge over leat, looking east northeast, now collapsed.

Visited on: Field Observation 15-Jul-2009 TR JJH

NPRN: 504545

NANTYBEDDAU, TRACKWAY III

TRACKWAY

NGR: SN8506465487 Grid reference taken at point along linear site **Altitude:** 380
Period: Post Medieval? **Broadclass:** Transport
Form: Earthwork **Condition:** C

Site Status:

Description: A short length of former trackway could be traced running east to west for 70m below the modern Claerwen road. It was grass-covered and seen as an earthwork terraced into the slope. It was 2m wide. It does not correspond with trackways shown on any edition of the Ordnance Survey maps. J.J. Hall, Trysor, 24 November 2009

SMR PRN:**Relationships:****Photographs:**

ELNS2009_068 01/10/2009 Trackway, looking northeast.

Visited on: Field Observation 01-Oct-2009 TR JJH

NPRN: 504546

ESGAIR NANTYBEDDAU, STRUCTURE

LONG HUT?;RING CAIRN?

NGR: SN8472665555 Grid reference taken at centre of site**Altitude:** 386**Period:** Unknown **Broadclass:** Domestic**Form:** Earthwork **Condition:** D**Site Status:**

Description: A grass-covered stone feature on the south-facing slope of Esgair Nantybeddau. The extent of the feature was up to 7m east to west by 3m. It was terraced into the slope on the northern side. Some of the stone was visible through the grass but more stone lay below the turf cover. It was not clear what the feature represented. Initially it was thought to be a cairn that had become spread but after more consideration and further probing of the ground surface it was thought that it may be the remains of a long hut. J.J. Hall, Trysor, 24 November 2009

SMR PRN:**Relationships:****Photographs:**

ELNS2009_071 01/10/2009 Stone feature, looking southeast.

ELNS2009_072 01/10/2009 Stone feature, looking northeast.

Visited on: Field Observation 01-Oct-2009 TR JJH**NPRN:** 504547

NANT BRYN HIR, RAIN GAUGE

RAIN GAUGE

NGR: SN8432368139 Grid reference taken at centre of site**Altitude:** 449**Period:** Modern **Broadclass:** Education**Form:** Other Structure **Condition:** C**Site Status:**

Description: A square post and wire fenced enclosure measuring 3m by 3m with a rain gauge funnel placed centrally within it. The wire fence was still in place but the posts were starting to decay and the feature was becoming overgrown. J.J. Hall, Trysor, 24 November 2009

SMR PRN:**Relationships:****Photographs:**

ELNS2009_070 01/10/2009 Detail of rain gauge funnel.

ELNS2009_069 01/10/2009 Rain gauge enclosure, looking north

Visited on: Field Observation 01-Oct-2009 TR JJH

NPRN: 504548

MOELFRYN, ENCLOSURE VI

EXPERIMENTAL PLOT

NGR: SN9046366342 Grid reference taken at centre of site **Altitude:** 461
Period: Modern **Broadclass:** Education
Form: Other Structure **Condition:** A

Site Status:

Description: A small, square enclosure defined by a post and wire fence with a wooden rail around the top. It measured 4m by 4m with no entrance into it. The general vegetation in the locality was grassland. J.J. Hall, Trysor, 1 December 2009

SMR PRN:

Relationships: **Photographs:**

Visited on: Field Observation 16-Jul-2009 TR JJH

NPRN: 504549

MOELFRYN, ENCLOSURE X

EXPERIMENTAL PLOT

NGR: SN9041866307 Grid reference taken at centre of site **Altitude:** 462
Period: Modern **Broadclass:** Education
Form: Other Structure **Condition:** A

Site Status:

Description: A small, square enclosure defined by a post and wire fence with a wooden rail around the top. It measured 4m by 4m with no entrance into it. The general vegetation in the locality was grassland. J.J. Hall, Trysor, 1 December 2009

SMR PRN:

Relationships: **Photographs:**

Visited on: Field Observation 16-Jul-2009 TR JJH

NPRN: 504550

MOELFRYN, ENCLOSURE I

EXPERIMENTAL PLOT

NGR: SN9037466286 Grid reference taken at centre of site **Altitude:** 463
Period: Modern **Broadclass:** Education
Form: Other Structure **Condition:** A

Site Status:

Description: A small, square enclosure defined by a post and wire fence with a wooden rail around the top. It measured 4m by 4m with no entrance into it. The general vegetation in the locality was grassland. J.J. Hall, Trysor, 1 December 2009

SMR PRN:

Relationships: **Photographs:**

Visited on: Field Observation 16-Jul-2009 TR JJH

NPRN: 504551

MOELFRYN, ENCLOSURE V

EXPERIMENTAL PLOT

NGR: SN9035066226 Grid reference taken at centre of site **Altitude:** 462
Period: Modern **Broadclass:** Education
Form: Other Structure **Condition:** A

Site Status:

Description: A small, square enclosure defined by a post and wire fence with a wooden rail around the top. It measured 4m by 4m with no entrance into it. The general vegetation in the locality was grassland. J.J. Hall, Trysor, 1 December 2009

SMR PRN:

Relationships: **Photographs:**

Visited on: Field Observation 16-Jul-2009 TR JJH

NPRN: 504552

MOELFRYN, ENCLOSURE VIX

EXPERIMENTAL PLOT

NGR: SN9039666162 Grid reference taken at centre of site **Altitude:** 455
Period: Modern **Broadclass:** Education
Form: Other Structure **Condition:** A

Site Status:

Description: A small, square enclosure defined by a post and wire fence with a wooden rail around the top. It measured 4m by 4m with no entrance into it. The general vegetation in the locality was grassland with heather and bilberry within the plot J.J. Hall, Trysor, 1 December 2009

SMR PRN:

Relationships: **Photographs:**

Visited on: Field Observation 16-Jul-2009 TR JJH

NPRN: 504553

MOELFRYN, ENCLOSURE XI

EXPERIMENTAL PLOT

NGR: SN9024965957 Grid reference taken at centre of site **Altitude:** 449
Period: Modern **Broadclass:** Education
Form: Other Structure **Condition:** A

Site Status:

Description: A small, square enclosure defined by a post and wire fence with a wooden rail around the top. It measured 4m by 4m with no entrance into it. The general vegetation in the locality was grassland. J.J. Hall, Trysor, 1 December 2009

SMR PRN:

Relationships: **Photographs:**

Visited on: Field Observation 16-Jul-2009 TR JJH

NPRN: 504554

MOELFRYN, ENCLOSURE VIII

EXPERIMENTAL PLOT

NGR: SN9030065966 Grid reference taken at centre of site **Altitude:** 448
Period: Modern **Broadclass:** Education
Form: Other Structure **Condition:** A

Site Status:

Description: A small, square enclosure defined by a post and wire fence with a wooden rail around the top. It measured 4m by 4m with no entrance into it. The general vegetation in the locality was grassland. J.J. Hall, Trysor, 1 December 2009

SMR PRN:**Relationships:****Photographs:**

Visited on: Field Observation 16-Jul-2009 TR JJH

NPRN: 504555

MOELFRYN, ENCLOSURE VII

EXPERIMENTAL PLOT

NGR: SN9029465980 Grid reference taken at centre of site **Altitude:** 448
Period: Modern **Broadclass:** Education
Form: Other Structure **Condition:** A

Site Status:

Description: A small, square enclosure defined by a post and wire fence with a wooden rail around the top. It measured 4m by 4m with no entrance into it. The general vegetation in the locality was grassland. J.J. Hall, Trysor, 1 December 2009

SMR PRN:**Relationships:****Photographs:**

Visited on: Field Observation 16-Jul-2009 TR JJH

NPRN: 504556

LLETHR DU, FOOTBRIDGE I

FOOTBRIDGE

NGR: SN8685268300 Grid reference taken at centre of site **Altitude:** 482
Period: Post Medieval **Broadclass:** Transport
Form: Other Structure **Condition:** C

Site Status:

Description: A small, collapsed, stone footbridge over leat NPRN 261660. A stone slab lay within the leat with stone revetting on the sides of the leat. When visited in July 2009 the area was used for rough grazing and the vegetation cover was grass. J.J. Hall, Trysor, 24 November 2009

SMR PRN:**Relationships:****Photographs:**

Associated with 261660 ELNS2009_009 15/07/2009 Small footbridge over leat, looking northeast, now collapsed.

Visited on: Field Observation 15-Jul-2009 TR JJH

NPRN: 504557

ESGAIR Y GADAIR, ENCLOSURE V

EXPERIMENTAL PLOT

NGR: SN8593166609 Grid reference taken at centre of site **Altitude:** 511

Period: Modern **Broadclass:** Education

Form: Other Structure **Condition:** A

Site Status:

Description: A small, square enclosure defined by a post and wire fence with a wooden rail around the top. It measured 4m by 4m with no entrance into it. The general vegetation in the locality was purple moor grass. J.J. Hall, Trysor, 1 December 2009

SMR PRN:

Relationships:

Photographs:

Visited on: Field Observation 15-Jul-2009 TR JJH

NPRN: 504558

ESGAIR Y GADAIR, ENCLOSURE II

EXPERIMENTAL PLOT

NGR: SN8592466578 Grid reference taken at centre of site **Altitude:** 511

Period: Modern **Broadclass:** Education

Form: Other Structure **Condition:** A

Site Status:

Description: A small, square enclosure defined by a post and wire fence with a wooden rail around the top. It measured 4m by 4m with no entrance into it. The general vegetation in the locality was purple moor grass. J.J. Hall, Trysor, 1 December 2009

SMR PRN:

Relationships:

Photographs:

Visited on: Field Observation 15-Jul-2009 TR JJH

NPRN: 504559

LLETHR HIR, HOLLOW

QUARRY?

NGR: SN8323766495 Grid reference taken at centre of site **Altitude:** 427

Period: Unknown **Broadclass:** Industrial

Form: Earthwork **Condition:** C

Site Status:

Description: A small, grass-covered hollow, measuring 3m in diameter and 0.50m deep with some stone around the edges. J.J. Hall, Trysor, 24 November 2009

SMR PRN:

Relationships:

Photographs:

ELNS2009_067 11/10/2009 Hollow, looking northeast.

Visited on: Field Observation 11-Oct-2009 TR JJH

NPRN: 504560

ESGAIR Y GADAIR, ENCLOSURE IV

EXPERIMENTAL PLOT

NGR: SN8590266571 Grid reference taken at centre of site **Altitude:** 511
Period: Modern **Broadclass:** Education
Form: Other Structure **Condition:** A

Site Status:

Description: A small, square enclosure defined by a post and wire fence with a wooden rail around the top. It measured 4m by 4m with no entrance into it. The general vegetation in the locality was purple moor grass. J.J. Hall, Trysor, 1 December 2009

SMR PRN:

Relationships: **Photographs:**

Visited on: Field Observation 15-Jul-2009 TR JJH

NPRN: 504561

ESGAIR Y GADAIR, ENCLOSURE I

EXPERIMENTAL PLOT

NGR: SN8590866565 Grid reference taken at centre of site **Altitude:** 511
Period: Modern **Broadclass:** Education
Form: Other Structure **Condition:** A

Site Status:

Description: A small, square enclosure defined by a post and wire fence with a wooden rail around the top. It measured 4m by 4m with no entrance into it. The general vegetation in the locality was purple moor grass. J.J. Hall, Trysor, 1 December 2009

SMR PRN:

Relationships: **Photographs:**

Visited on: Field Observation 15-Jul-2009 TR JJH

NPRN: 504562

CEFN TROEDRHIW DRAIN, PEAT CUTTING AREA

PEAT WORKINGS

NGR: SN8888366594 Grid reference taken at a central point within extensive site **Altitude:** 487
Period: Post Medieval **Broadclass:** Industrial
Form: Earthwork **Condition:** C

Site Status:

Description: An extensive area of peat workings covering an area at least 350m northeast-southwest by 220m. Vegetation across the area in September 2009 was purple moor grass with a few scattered clumps of reeds. J.J. Hall, Trysor, 6 December 2009

SMR PRN:

Relationships: **Photographs:**

Visited on: Field Observation 10-Sep-2009 TR JJH

NPRN: 504563

ESGAIR BRITHGWM, PEAT WORKINGS PEAT WORKINGS

NGR: SN8843367338 Grid reference taken at a central point within extensive site **Altitude:** 458

Period: Post Medieval **Broadclass:** Industrial

Form: Earthwork **Condition:** C

Site Status:

Description: An area of possible peat workings, covering an area of 425m east to west by 100m. The peat cuttings can be seen more clearly on aerial photographs than on the ground as when visited in 2009 they were obscured by purple moor grass. J.J. Hall, Trysor, 8 December 2009

SMR PRN:

Relationships: **Photographs:**

Visited on:

NPRN: 504564

ESGAIR NANTYBEDDAU, PEAT CUTTING PEAT CUTTING

NGR: SN8486066073 Grid reference taken at centre of site **Altitude:** 450

Period: Post Medieval **Broadclass:** Industrial

Form: Earthwork **Condition:** C

Site Status:

Description: A narrow peat cutting, approximately 45m northeast to southwest by 2m. J.J. Hall, Trysor, 8 December 2009

SMR PRN:

Relationships: **Photographs:**

Visited on: Field Observation 27-Sep-2009 TR JJH

NPRN: 504565

CLAERWEN, TRACK ROAD

NGR: SN8586265298 Grid reference taken at point along linear site **Altitude:** 420

Period: Modern **Broadclass:** Transport

Form: Other Structure **Condition:** A

Site Status:

Description: J.J. Hall, Trysor, 8 December 2009

SMR PRN:

Relationships: **Photographs:**

Visited on:

NPRN: 504566

NANTYBEDDAU, PEAT WORKING

PEAT WORKINGS

NGR: SN8497566300 Grid reference taken at a central point within extensive site **Altitude:** 456

Period: Post Medieval **Broadclass:** Industrial

Form: Earthwork **Condition:** C

Site Status:

Description: An area of peat cutting 50m by 50m, now within a wire fenced enclosure at Nantybeddau. When visited in September 2009 the area was used for rough grazing and the vegetation cover was purple moor grass. J.J. Hall, Trysor, 8 December 2009

SMR PRN:

Relationships:

Photographs:

Visited on: Field Observation 27-Sep-2009 TR JJH

NPRN: 504567

NANT Y BEDDAU, EARTHWORK

EARTHWORK

NGR: SN8558566989 Grid reference taken at centre of site **Altitude:** 464

Period: Unknown **Broadclass:** Monument <By Form>

Form: Earthwork **Condition:** C

Site Status:

Description: A linear earthwork feature that crosses one of the braided streams of the upper parts of the Nant y Beddau. Overall the feature measures approximately 85m northeast to southwest. To the southwest of the stream it is cut into the slope and appears to be a trackway, to the northeast of the stream it looks more like an earthwork bank. Its purpose and function are unknown. J.J. Hall, Trysor, 8 December 2009

SMR PRN:

Relationships:

Photographs:

Visited on: Field Observation 29-Sep-2009 TR JJH

NPRN: 504568
DYFNANT, LONG HUT

LONG HUT

NGR: SN8789464984 Grid reference taken at centre of site **Altitude:** 455
Period: Medieval?;Post Medieval? **Broadclass:** Domestic
Form: Ruin **Condition:** D

Site Status:

Description: The remains of a drystone, rectangular structure on a gently sloping natural terrace in the upper reaches of a steep stream valley. The structure measured 8m west southwest to east northeast by 4.5m externally. The grass-covered wall bases were spread up to 1m wide but only 0.2m high. Some stone was visible through the turf. Internally the structure was divided into two with edge set stones marking the dividing wall line. The west southwest cell was slightly larger being 3.5m by 2.5m, the east northeast cell was 2.5m by 2.5m. J.J. Hall, Trysor, 24 November 2009

SMR PRN:**Relationships:****Photographs:**

ELNS2009_021	09/09/2009	Long hut, looking west southwest.
ELNS2009_020	09/09/2009	Long hut, looking south southeast.
ELNS2009_019	09/09/2009	Long hut, looking east northeast.

Visited on: Field Observation 09-Sep-2009 TR JJH

NPRN: 504569
CRAIG DYFNANT, MARKER CAIRN

MARKER CAIRN

NGR: SN8765265643 Grid reference taken at centre of site **Altitude:** 544
Period: Modern? **Broadclass:** Unassigned
Form: Earthwork **Condition:** A

Site Status:

Description: A small marker cairn, with one stone upright surrounded by the others. The cairn was 1m by 0.80m and 0.50m high. When visited in July 2009 the area was used for rough grazing. The ground surface was peat and the vegetation cover was grass. J.J. Hall, Trysor, 24 November 2009

SMR PRN:**Relationships:****Photographs:**

ELNS2009_022	09/09/2009	Marker cairn, looking south southwest.
--------------	------------	--

Visited on: Field Observation 09-Sep-2009 TR JJH

NPRN: 504570

CAE BLAENMETHAN, QUARRIED AREA QUARRY?:TRIAL MINE?

NGR: SN8872665934 Grid reference taken at point along linear site **Altitude:** 494
Period: Post Medieval? **Broadclass:** Industrial
Form: Earthwork **Condition:** C

Site Status:

Description: A line of quarry pits on a southeast facing slope within the large outer enclosure at Cae Blaenmethan. The pits run intermittently for 160m south southwest to north northeast from SN8872665934 to SN8863265807 with grassed-over spoil banks downslope to the southeast. The feature varies in width from 5m to 10m. It is probably quarrying for stone to build the buildings and field boundaries at Cae Blaenmethan but maybe connected with ore prospecting. When visited in September 2009 the area was used for rough grazing and the vegetation cover was grass with reeds in the quarry hollows. J.J. Hall, Trysor, 24 November 2009

SMR PRN:**Relationships:****Photographs:**

ELNS2009_023 09/09/2009 Linear quarry, looking south southwest.

Visited on: Field Observation 09-Sep-2009 TR JJH

NPRN: 504571

CAE BLAENMETHAN, SHELTER SHELTER

NGR: SN8903065962 Grid reference taken at centre of site **Altitude:** 452
Period: Post Medieval? **Broadclass:** Monument <By Form>
Form: Earthwork **Condition:** C

Site Status:

Description: A D shaped earthwork feature built against an outcrop. The feature measured 7, northeast-southwest by 3m with a 1.5m wide bank. When visited in July 2009 the area was used for rough grazing and the vegetation cover was grass and reeds. J.J. Hall, Trysor, 24 November 2009

SMR PRN:**Relationships:****Photographs:**

ELNS2009_024 09/09/2009 Earthwork feature, looking southwest.

Visited on: Field Observation 09-Sep-2009 TR JJH

NPRN: 504572

CAE BLAENMETHAN, QUARRY

QUARRY

NGR: SN8906265965 Grid reference taken at centre of site**Altitude:** 452**Period:** Post Medieval **Broadclass:** Industrial**Form:** Earthwork **Condition:** C**Site Status:****Description:** J.J. Hall, Trysor, 24 November 2009**SMR PRN:****Relationships:****Photographs:**

ELNS2009_025 09/09/2009 Quarry, looking south.

Visited on: Field Observation 09-Sep-2009 TR JJH**NPRN:** 504573

CAE BLAENMETHAN, SHEEP FOLD

SHEEP FOLD

NGR: SN8914565992 Grid reference taken at centre of site**Altitude:** 439**Period:** Post Medieval? **Broadclass:** Agriculture and Subsistence**Form:** Other Structure **Condition:** B**Site Status:****Description:** A drystone built structure, in places still existing to full height. J.J. Hall, Trysor, 24 November 2009**SMR PRN:****Relationships:****Photographs:**

ELNS2009_027 09/09/2009 Drystone fold, looking north northwest.

ELNS2009_026 09/09/2009 Drystone fold, looking south southeast.

Visited on: Field Observation 09-Sep-2009 TR JJH**NPRN:** 504574

CAE BLAENMETHAN, WATER CONTROL

SLUICE

NGR: SN8906566179 Grid reference taken at centre of site**Altitude:** 451**Period:** Modern **Broadclass:** Water Supply and Drainage**Form:** Other Structure **Condition:** C**Site Status:****Description:** A concrete sluice or water control point connected with the covered sheep wash, NPRN 261810. J.J. Hall, Trysor, 24 November 2009**SMR PRN:****Relationships:****Photographs:**

ELNS2009_028 09/09/2009 Sluice for sheep dip NPRN 261810, in the background, looking south southeast.

Visited on: Field Observation 09-Sep-2009 TR JJH

NPRN: 504575

CAE BLAENMETHAN, MARKER CAIRN MARKER CAIRN

NGR: SN8710264452 Grid reference taken at centre of site **Altitude:** 390

Period: Modern **Broadclass:** Unassigned

Form: Earthwork **Condition:** C

Site Status:

Description: A low marker cairn built on top of the remains of the outer boundary wall at Cae Blaenmethan. The cairn measures 1m in diameter and up to 0.30m high. J.J. Hall, Trysor, 24 November 2009

SMR PRN:

Relationships:

Photographs:

ELNS2009_029 09/09/2009 Marker cairn, looking south.

Visited on:

NPRN: 504576

NANTYBEDDAU, FARM BUILDING III FARM BUILDING

NGR: SN8526666160 Grid reference taken at centre of site **Altitude:** 411

Period: Post Medieval?;Modern? **Broadclass:** Agriculture and Subsistence

Form: Building **Condition:** A

Site Status:

Description: A farm building, measuring 13m north northwest to south southeast by 5m. J.J. Hall, Trysor, 8 December 2009

SMR PRN:

Relationships:

Photographs:

Visited on:

NPRN: 504577

WAUN LLE'R HELM, STONE PILE MARKER CAIRN

NGR: SN8711566375 Grid reference taken at centre of site **Altitude:** 472

Period: Modern **Broadclass:** Unassigned

Form: Earthwork **Condition:** C

Site Status:

Description: A small cairn composed of seven quartz blocks. It measures 0.75m by 0.50m and 0.20m high. J.J. Hall, Trysor, 24 November 2009

SMR PRN:

Relationships:

Photographs:

ELNS2009_038 10/09/2009 Small marker cairn, looking north.

Visited on: Field Observation 10-Sep-2009 TR JJH

NPRN: 504578

CERRIG Y GADAI, RING CAIRN

RING CAIRN

NGR: SN8606665273 Grid reference taken at centre of site **Altitude:** 432**Period:** Bronze Age **Broadclass:** Religious Ritual and Funerary**Form:** Earthwork **Condition:** C**Site Status:****Description:** When visited in September 2009 the area was used for rough grazing and the vegetation cover was grass and thistles. J.J. Hall, Trysor, 24 November 2009**SMR PRN:****Relationships:****Photographs:**

ELNS2009_049	10/09/2009	Detail of western side of ring cairn, looking west southwest.
ELNS2009_048	29/09/2009	Ring cairn, looking west southwest.
ELNS2009_047	10/09/2009	Ring cairn, looking northeast.
ELNS2009_046	10/09/2009	Ring cairn, looking south.
ELNS2009_045	10/09/2009	Ring cairn, looking north northwest.
ELNS2009_044	10/09/2009	Ring cairn, looking south southeast.

Visited on: Field Observation 10-Sep-2009 TR JJH**NPRN:** 504579

NANTYBEDDAU, STONE SPREAD

CAIRN?

NGR: SN8510065569 Grid reference taken at centre of site **Altitude:** 405**Period:** Bronze Age? **Broadclass:** Religious Ritual and Funerary**Form:** Earthwork **Condition:** C**Site Status:****Description:** A possible stone cairn on a south-facing slope above the Claerwen valley. The feature is largely grass-covered with four or five stones visible but more stones can be detected beneath the turf by prodding. It was approximately 1m in diameter and 0.10m high J.J. Hall, Trysor, 24 November 2009**SMR PRN:****Relationships:****Photographs:**

ELNS2009_052	27/09/2009	Possible cairn, looking north.
--------------	------------	--------------------------------

Visited on: Field Observation 27-Sep-2009 TR JJH

NPRN: 504580

ESGAIR NANTYBEDDAU, QUARRY QUARRY

NGR: SN8483965795 Grid reference taken at centre of site **Altitude:** 437

Period: Post Medieval? **Broadclass:** Industrial

Form: Earthwork **Condition:** C

Site Status:

Description: A grassed-over linear quarry with a spoil bank on its southern side. The quarry measures 10 east to west by 2m and up to 0.5m deep. J.J. Hall, Trysor, 24 November 2009

SMR PRN:

Relationships: **Photographs:**

Visited on: Field Observation 27-Sep-2009 TR JJH

NPRN: 504581

ESGAIR NANTYBEDDAU, QUARRIED QUARRY?;TRIAL MINE?
AREA

NGR: SN8487265825 Grid reference taken at centre of site **Altitude:** 442

Period: Post Medieval? **Broadclass:** Industrial

Form: Earthwork **Condition:** C

Site Status:

Description: A linear V shaped trench measuring 20 southwest to northeast by 2m and 0.50 deep. A spoil bank ran along its southeastern side. The whole of the feature was grass-covered when recorded in September 2009. It may have been a quarry or possibly a trial working prospecting for metal ores. J.J. Hall, Trysor, 24 November 2009

SMR PRN:

Relationships: **Photographs:**
ELNS2009_053 27/09/2009 Quarry or trial working, looking southwest.

Visited on: Field Observation 27-Sep-2009 TR JJH

NPRN: 504582

NANTYBEDDAU, DOMESTIC TELEVISION AERIAL DOMESTIC TELEVISION AERIAL

NGR: SN8504766016 Grid reference taken at centre of site **Altitude:** 455**Period:** Modern **Broadclass:** Domestic**Form:** Other Structure **Condition:** D**Site Status:****Description:** The former siting of a domestic television aerial for the farmhouse at Nantybeddau. A post and wire fenced, square enclosure, now collapsed, protected a metal post in the centre on which the aerial would have been. The aerial was no longer present although wiring was visible. The enclosure was 2.5m by 2.5m and a slight earthwork bank had formed at the base of the fence. When visited in September 2009 the area was used for rough grazing and the vegetation cover was grass. J.J. Hall, Trysor, 24 November 2009**SMR PRN:****Relationships:****Photographs:**

ELNS2009_054 27/09/2209 Former domestic television aerial, looking southeast.

Visited on: Field Observation 27-Sep-2009 TR JJH**NPRN:** 504583

NANTYBEDDAU, MOUND REFUSE DISPOSAL SITE

NGR: SN8510465941 Grid reference taken at centre of site **Altitude:** 443**Period:** Modern **Broadclass:** Industrial**Form:** Earthwork **Condition:** C**Site Status:****Description:** An irregular mound of grass-covered stone rubble with 20th century waste materials to the east of it. The mound is 5m northeast to southwest by 3.5m. It is thought that it all relates to waste material from Nantybeddau during the 20th century. J.J. Hall, Trysor, 24 November 2009**SMR PRN:****Relationships:****Photographs:**

ELNS2009_050 27/09/2009 Grass-covered mound of stone rubble, looking northeast.

Visited on: Field Observation 27-Sep-2009 TR JJH**NPRN:** 504584

NANT BRYN HIR, TRACKWAY TRACKWAY

NGR: SN8433168031 Grid reference taken at point along linear site **Altitude:** 452**Period:** Post Medieval? **Broadclass:** Transport**Form:** Earthwork **Condition:** C**Site Status:****Description:** A section of earthwork trackway, now grass-covered, that could be traced running for 130m northeast to southwest to the south of Nant Bryn Hir. Its date and purpose were unclear. J.J. Hall, Trysor, 8 December 2009**SMR PRN:****Relationships:****Photographs:**

ELNS2009_073 29/09/2009 Trackway, looking northwest.

Visited on: Field Observation 29-Sep-2009 TR JJH

NPRN: 504585

FUCHES, BANK

BANK (EARTHWORK)?

NGR: SN8604568354 Grid reference taken at point along linear site **Altitude:** 439
Period: Post Medieval? **Broadclass:** Monument <By Form>
Form: Earthwork **Condition:** C

Site Status:

Description: An earthwork bank running for approximately 115m east to west from a minor stream, upslope to a another stream or wet area. When visited in July 2009 the area was used for rough grazing and the vegetation cover was dense bracken. J.J. Hall, Trysor, 8 December 2009

SMR PRN:

Relationships:

Photographs:

Visited on: Field Observation 15-Jul-2009 TR JJH

NPRN: 504586

NANTYBEDDAU, FARM BUILDING II

FARM BUILDING

NGR: SN8527966165 Grid reference taken at centre of site **Altitude:** 413
Period: Post Medieval?;Modern? **Broadclass:** Agriculture and Subsistence
Form: Building **Condition:** A

Site Status:

Description: A farm building measuring 9m east northeast to west southwest by 7m. J.J. Hall, Trysor, 8 December 2009

SMR PRN:

Relationships:

Photographs:

Visited on:

NPRN: 504587

NANT Y BEDDAU, LONGHOUSE

LONGHOUSE

NGR: SN8534465517 Grid reference taken at centre of site

Altitude: 383

Period: Medieval?;Post Medieval? **Broadclass:** Domestic

Form: Ruin **Condition:** D

Site Status:

Description: A longhouse on a southeast-facing slope, formerly above Nant y Beddau stream but now close to the edge of the Claerwen reservoir. It was defined by grassed-over banks up to 0.25m high in which some stone was visible and externally measured 9.5m east southeast to west northwest by 4.5m. At the west northwest end it was terraced into the slope and the floor dipped to the east southeast. An internal stone division was detected below the turf, dividing the building into two roughly equal cells with a drop of 0.25m between the two. J.J. Hall, Trysor, 24 November 2009

SMR PRN:

Relationships:

Photographs:

ELNS2009_055 29/09/2009 Longhouse, looking northeast.

ELNS2009_056 29/09/2009 Longhouse, looking east southeast.

ELNS2009_057 29/09/2009 Longhouse, looking southeast.

Visited on: Field Observation 27-Sep-2009 TR JJH

NPRN: 504588

NANTYBEDDAU, QUARRY III

QUARRY

NGR: SN8533165875 Grid reference taken at centre of site

Altitude: 401

Period: Modern **Broadclass:** Industrial

Form: Earthwork **Condition:** C

Site Status:

Description: A quarry on the west side of the mid 20th century trackway to Nantybeddau, NPRN J.J. Hall, Trysor, 24 November 2009

SMR PRN:

Relationships:

Photographs:

ELNS2009_051 27/09/2009 Quarry, looking west.

Visited on: Field Observation 27-Sep-2009 TR JJH

NPRN: 504589

NANT Y BEDDAU, SHELTER

SUNKEN SHELTER

NGR: SN853716555 Grid reference taken at centre of site **Altitude:** 382**Period:** Medieval?;Post Medieval? **Broadclass:** Unassigned**Form:** Earthwork **Condition:** C**Site Status:****Description:** A horseshoe shaped hollow on the southeast facing slope formerly above Nant y Beddau stream but now close to the edge of the Claerwen reservoir created in the mid 20th century. The western end and southern side were terraced into the slope, and the northern side was defined by a cast up bank. The eastern end was open. J.J. Hall, Trysor, 24 November 2009**SMR PRN:****Relationships:****Photographs:**

ELNS2009_058	29/09/2009	Sunken shelter, looking southeast.
ELNS2009_059	29/09/2009	Sunken shelter, looking southeast.

Visited on: Field Observation 29-Sep-2009 TR JJH**NPRN:** 504590

NANT BRYN HIR, STONE PILE

STONE PILE

NGR: SN8440367997 Grid reference taken at centre of site **Altitude:** 440**Period:** Unknown **Broadclass:** Unassigned**Form:** Earthwork **Condition:** C**Site Status:****Description:** A circular arrangement of stones measuring 1m in diameter with a gap in the centre approximately 0.20m across. It lies on a river terrace on the southern side of the Nant Bryn Hir. J.J. Hall, Trysor, 24 November 2009**SMR PRN:****Relationships:****Photographs:**

ELNS2009_062	29/09/2009	Stone pile, looking north.
ELNS2009_063	29/09/2009	Stone pile, looking east.

Visited on: Field Observation 29-Sep-2009 TR JJH**NPRN:** 504591

HIRNANT CLAERWEN, SHELTER II

SUNKEN SHELTER

NGR: SN8400367106 Grid reference taken at centre of site **Altitude:** 404**Period:** Medieval?;Post Medieval? **Broadclass:** Unassigned**Form:** Earthwork **Condition:** C**Site Status:****Description:** A sunken shelter J.J. Hall, Trysor, 24 November 2009**SMR PRN:****Relationships:****Photographs:**

ELNS2009_064	29/09/2009	Shelter, looking east southeast.
--------------	------------	----------------------------------

Visited on: Field Observation 29-Sep-2009 TR JJH

NPRN: 504592
HIRNANT CLAERWEN, SHELTER I SUNKEN SHELTER
NGR: SN8399067085 Grid reference taken at centre of site **Altitude:** 404
Period: Medieval?;Post Medieval? **Broadclass:** Unassigned
Form: Earthwork **Condition:** C
Site Status:
Description: J.J. Hall, Trysor, 24 November 2009

SMR PRN:

Relationships: **Photographs:**
 ELNS2009_066 29/09/2009 Shelter, looking south.
 ELNS2009_065 29/09/2009 Shelter, looking southeast.
Visited on: Field Observation 29-Sep-2009 TR JJH

NPRN: 504593
ESGAIR GRIS, PEAT CUTTING PEAT CUTTING
NGR: SN8785768225 Grid reference taken at centre of site **Altitude:** 459
Period: Post Medieval **Broadclass:** Industrial
Form: Earthwork **Condition:** C
Site Status:
Description: Linear peat cutting, 70m east to west by 5m. J.J. Hall, Trysor, 8 December 2009

SMR PRN:

Relationships: **Photographs:**
Visited on: Field Observation 15-Jul-2009 TR JJH

NPRN: 504594
CEFN CWM COEL, PEAT CUTTING AREA PEAT WORKINGS
NGR: SN8940065430 Grid reference taken at a central point within extensive site **Altitude:** 460
Period: Post Medieval **Broadclass:** Industrial
Form: Earthwork **Condition:** C
Site Status:
Description: An extensive area of peat workings covering an area at least 600m east-west by 500m. When visited in September 2009 the area was used for rough grazing and the vegetation cover was grass or purple moor grass. J.J. Hall, Trysor, 8 December 2009

SMR PRN:

Relationships: **Photographs:**
Visited on: Field Observation 07-Sep-2009 TR JJH

NPRN: 504595

BLAEN COEL, PEAT CUTTING AREA II PEAT WORKINGS

NGR: SN8875164434 Grid reference taken at a central point within extensive site **Altitude:** 460

Period: Post Medieval **Broadclass:** Industrial

Form: Earthwork **Condition:** C

Site Status:

Description: An area of linear peat cuttings covering an area approximately 50m by 50m. When visited in September 2009 the area was used for rough grazing and the vegetation cover was purple moor grass. J.J. Hall, Trysor, 8 December 2009

SMR PRN:

Relationships: **Photographs:**

Visited on: Field Observation 07-Sep-2009 TR JJH

NPRN: 504596

CLAERWEN TRACK, BRIDGE II BRIDGE

NGR: SN8420566109 Grid reference taken at centre of site **Altitude:** 385

Period: Modern **Broadclass:** Transport

Form: Other Structure **Condition:** A

Site Status:

Description: A mid 20th century bridge carrying the track, NPRN 504565, along the northern side of the Claerwen reservoir, NPRN 504565, over the Hirnant Claerwen. J.J. Hall, Trysor, 8 December 2009

SMR PRN:

Relationships: **Photographs:**

Visited on:

NPRN: 504597

CLAERWEN TRACK, BRIDGE IV BRIDGE

NGR: SN8541665859 Grid reference taken at centre of site **Altitude:** 391

Period: Modern **Broadclass:** Transport

Form: Other Structure **Condition:** A

Site Status:

Description: A mid 20th century flat bridge carrying the track, NPRN 504565, along the northern side of the Claerwen reservoir over the Nant y Beddau. J.J. Hall, Trysor, 8 December 2009

SMR PRN:

Relationships: **Photographs:**

Visited on:

NPRN: 504598

CLAERWEN TRACK, BRIDGE III BRIDGE

NGR: SN8630165354 Grid reference taken at centre of site **Altitude:** 395
Period: Modern **Broadclass:** Transport
Form: Other Structure **Condition:** A

Site Status:

Description: A mid 20th century bridge carrying the track, NPRN 504565, along the northern side of the Claerwen reservoir, NPRN 504565, over the Nant y Gadair. J.J. Hall, Trysor, 8 December 2009

SMR PRN:

Relationships: **Photographs:**

Visited on:

NPRN: 504599

CLAERWEN TRACK, BRIDGE I BRIDGE

NGR: SN8747764815 Grid reference taken at centre of site **Altitude:** 398
Period: Modern **Broadclass:** Transport
Form: Other Structure **Condition:** A

Site Status:

Description: A mid 20th century, bridge carrying the track, NPRN 504565, along the northern side of the Claerwen reservoir, NPRN 504565, over the Dyfnant stream. It was a flat bridge with no parapet built of stone. J.J. Hall, Trysor, 8 December 2009

SMR PRN:

Relationships: **Photographs:**
 ELNS2009_074 09/09/2009 Bridge, looking southwest.

Visited on: Field Observation 09-Sep-2009 TR JJH

NPRN: 504600

NANTYBEDDAU, FARM BUILDING IV AGRICULTURAL BUILDING

NGR: SN8520666102 Grid reference taken at centre of site **Altitude:** 425
Period: Modern **Broadclass:** Agriculture and Subsistence
Form: Building **Condition:** A

Site Status:

Description: An agricultural shed, measuring 28m south southeast to north northwest by 25m. J.J. Hall, Trysor, 8 December 2009

SMR PRN:

Relationships: **Photographs:**

Visited on:

NPRN: 504601

NANTYBEDDAU, FARM BUILDING I FARM BUILDING

NGR: SN8527166175 Grid reference taken at centre of site **Altitude:** 413
Period: Post Medieval?;Modern? **Broadclass:** Agriculture and Subsistence
Form: Building **Condition:** A
Site Status:
Description: J.J. Hall, Trysor, 8 December 2009

SMR PRN:

Relationships:

Photographs:

Visited on:

NPRN: 504602

ESGAIR NANTYBEDDAU, TRACKWAY TRACKWAY

NGR: SN8459066130 Grid reference taken at point along linear site **Altitude:** 429
Period: Post Medieval **Broadclass:** Transport
Form: Earthwork **Condition:** V
Site Status:
Description: A track shown on the 2nd edition Ordnance Survey map of XXX running from building NPRN 504515 at SN8517066190 J.J. Hall, Trysor, 8 December 2009

SMR PRN:

Relationships:

Photographs:

Visited on:

NPRN: 504603

NANTYBEDDAU, TRACKWAY II TRACKWAY

NGR: SN8499065800 Grid reference taken at point along linear site **Altitude:** 424
Period: Post Medieval **Broadclass:** Transport
Form: Earthwork **Condition:** D
Site Status:
Description: J.J. Hall, Trysor, 8 December 2009

SMR PRN:

Relationships:

Photographs:

Visited on:

NPRN: 504604LLEST Y GADAIR, DESERTED RURAL
SETTLEMENT

DESERTED RURAL SETTLEMENT

NGR: SN8685766295 Grid reference taken at centre of site**Altitude:** 415**Period:** Post Medieval**Broadclass:** Domestic**Form:** Complex**Condition:** V**Site Status:****Description:**

The deserted rural settlement at Llest y Gadair is probably a post medieval settlement only. It may be shown on the 1831 1" to 1 mile Ordnance Survey map but not named. It is shown as a single unoccupied building on the 1841 parish tithe map. By the time of the 1st edition 1:10560 Ordnance Survey map of 1891 it is shown as a single building within a very small field system, NPRN 504519. Trackway NPRN 504565 runs to it and a well NPRN 504518 may have provided its water. When visited in 2009, the settlement consisted of two ruined buildings NPRN 504517 and 504517. The field system was hard to define and the well was not found. J.J. Hall, Trysor, 8 December 2009

SMR PRN: CPAT 68846**Relationships:****Photographs:****Visited on:****NPRN:** 504605

NANT Y GADAIR, TRACKWAY

TRACKWAY

NGR: SN8644165856 Grid reference taken at point along linear site**Altitude:** 402**Period:** Post Medieval**Broadclass:** Transport**Form:** Earthwork**Condition:** C**Site Status:****Description:**

A trackway shown on the 1st and 2nd edition 1:10560 Ordnance Survey maps of 1891 and 1905. It ran from SN8726563248 near Cerrig Cwplau, along the northeast side of the Afon Claerwen and then along the eastern side of Nant y Gadair ending at Llest y Gadair at SN8685766271, a distance of nearly 4km. The southern half of the trackway is now below the Claerwen reservoir, but the line of the northern half is followed by a modern trackway. J.J. Hall, Trysor, 8 December 2009

SMR PRN:**Relationships:****Photographs:****Visited on:**

NPRN: 504606

NANTYBEDDAU, TRACKWAY I

TRACKWAY

NGR: SN8532665730 Grid reference taken at point along linear site**Altitude:** 395**Period:** Modern **Broadclass:** Transport**Form:** Earthwork **Condition:** A**Site Status:****Description:** A 20th century trackway from the modern Claerwen road, NPRN 504545, built during the creation of the Claerwen reservoir 1946-1952, to Nantybeddau farmstead, NRPN 504513. It is approximately 700m long and still in use and maintained in 2009 J.J. Hall, Trysor, 9 December 2009**SMR PRN:****Relationships:****Photographs:****Visited on:** Field Observation 27-Sep-2009 TR JJH**NPRN: 504607**

NANTYBEDDAU, QUARRY I

QUARRY

NGR: SN8524565645 Grid reference taken at centre of site**Altitude:** 409**Period:** Modern **Broadclass:** Industrial**Form:** Earthwork **Condition:** C**Site Status:****Description:** A quarry alongside modern trackway NPRN 504606. J.J. Hall, Trysor, 9 December 2009**SMR PRN:****Relationships:****Photographs:****Visited on:** Field Observation 27-Sep-2009 TR JJH**NPRN: 504608**

MOELFRYN, LINEAR EARTHWORK

LEAT?

NGR: SN8944566456 Grid reference taken at point along linear site**Altitude:** 470**Period:** Post Medieval **Broadclass:** Water Supply and Drainage**Form:** Earthwork **Condition:** V**Site Status:****Description:** A linear earthwork feature that runs from SN8922866981 south southeastwards crossing leat NPRN XXX twice, although the relationship is unclear. It carries on down the southfacing slope and then turns to run southeastwards along the valley side. The northern portion of the feature is a negative earthwork, ofeten now reed-filled. J.J. Hall, Trysor, 11 December 2009**SMR PRN:****Relationships:****Photographs:****Visited on:** Field Observation 16-Jul-2009 TR JJH

NPRN: 504609

NANT Y BEDDAU, STONE PILE

STONE PILE

NGR: SN8544966651 Grid reference taken at centre of site

Altitude: 433

Period: Unknown **Broadclass:** Unassigned

Form: Earthwork **Condition:** C

Site Status:

Description: A rough, partially grassed-over stone pile in the bottom of the upper part of the Nant y Beddau valley. It is probably a natural accumulation of stone, but may account for the word "stones" on the 2nd edition 1:10560 Ordnance Survey map of 1905. J.J. Hall, Trysor, 12 December 2009

SMR PRN:

Relationships:

Photographs:

Visited on: Field Observation 29-Sep-2009 TR JJH
