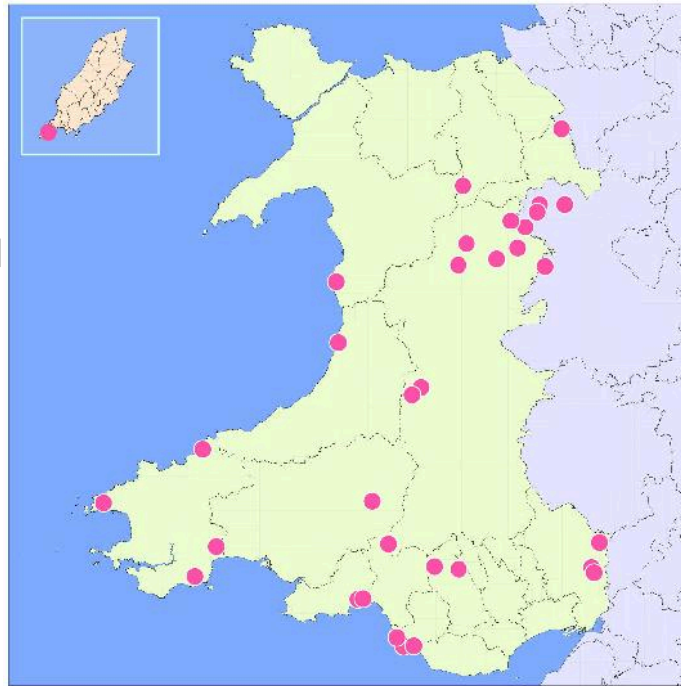




Beth allwn ni ddweud am 2020? Mae wedi bod yn wahanol i bob blwyddyn arall, yn sicr. Treulion ni fisoedd wedi cloi i lawr, yn methu gwneud gwaith maes. O'r haf ymlaen roedd pethau wedi pigo lan, gyda gwaith ar nifer o safleoedd diddorol iawn. Dyma rhai o'r uchafbwyntiau wrth i ni ddymuno Nadolig Llawen a Blwyddyn Newydd Dda i chi, pob iechyd da a phob lwc hefyd! Gofalwch ar ôl eich hunan! Gawn weld ein gilydd eto yn 2021!

What can be said about 2020? Its been different this year for certain. We spent months in lockdown, unable to do site work, but from summer onwards were very busy and got to see some tremendous places. We present some highlights for you and wish everybody a Merry Christmas and a Happy New Year... and good health and every possible good fortune! Stay safe and see you in 2021!

Er gwaetha misoedd hir y Cyfnod Clo, llwyddon ni wneud tipyn o waith maes eleni. Roedd yr amrywiaeth a lleoliad ein prosiectau yn syndod o eang yn erbyn y fath cefndir. Teimlwn yn ffodus dros ben i gadw'n brysur mewn cyfnod mor anodd Drosodd, gwelwch rhai o uchafbwyntiau'r flwyddyn!



Despite the long months of lockdown, we managed to get around a bit later in the year. The range of these projects was surprising in distribution and variety, despite the circumstances. We feel lucky to have kept busy during these difficult times. Overleaf are just a few of this year's highlights!



*Ymweliad â Chylch Cerrig, Moel Ty Uchaf, Llandrillo, Sir Ddinbych, Mis Medi.
A visit to the Moel Ty Uchaf Stone Circle, Llandrillo, Denbighshire, September.*

Uchafbwyntiau 2020

Cawsom arlwy diddorol iawn o waith i'w fwynhau eleni, yn amrywio o gofnodi Bethel Abernant, Capel y Bedyddiwr, Aberdâr (1) ychydig o wythnosau cyn iddo gael ei ddymchwel, i astudio cloddiau traddodiadol o fewn Parc Cenedlaethol Arfordir Penfro (6) a gwyltio prosiect rheoli twyni tywod yn ardal Porthcawl (7).

Gwelsom nifer o safleoedd gyda phyllau cynhanesyddol eto eleni, gan gynnwys enghreifftiau gwych yn agos i Lyn Efyrynwy, Powys (2), oedd wedi cael eu creu tua chanol Oes yr Efydd (tua 3,200CC) yn eu dyddiad radio carbon. Buom hefyd yn gweithio ar hen gapel canoloesol tybiedig yn Sir Fynwy (3) a brofodd i fod yn llawer mwy diweddar, gydag odyn crasu fendigedig o'r 18fed ganrif yn cuddio dan y llawr fflags!

Oherwydd y Cofid, ychydig o gyfleoedd sydd wedi bod i gwrdd â chydweithwyr eleni, ond cawsom gyfle i fynd allan gyda'n hen gyfaill Ian Brooks EAS dros yr haf i wneud arolygon geoffisegol yng Nghwm Elan fel rhan o brosiect Cysylltu Elan, sy'n cael ei ariannu gan y Gronfa Loteri. Roedd hyn cynnwys safle anheddiad cynnar posibl yn ymyl adfail fferm Lluest Abercaethon (4). Mae wedi bod yn brofiad diddorol hefyd i astudio data LiDAR ar gyfer rhannau o Ynys Manaw i greu cofnodion i Dreftadaeth Genedlaethol Ynys Manaw (5) yn ddiweddar, ein prosiect tramor cyntaf!

Highlights of 2020

From Bethel Baptist chapel (1), Abernant, Aberdare which we recorded just before demolition, to a study of field boundary types in the Pembrokeshire Coast National Park (6) and a NRW sand dune management scheme near Porthcawl (7), there has been nothing dull about our site work in 2020.

We saw a number of sites with prehistoric pits again this year, including these splendid examples (2) near Lake Vyrnwy, Powys which gave mid-Bronze Age radiocarbon dates (c. 3,200BC). We also did a watching brief and building record on a supposed medieval chapel in Monmouthshire (3) which turned out to be much more recent and had a beautifully preserved 18th century kiln beneath its floor!

Due to Covid, we had few opportunities to meet colleagues this year, but did get together on site with our old friend Ian Brooks from EAS to do some geophysical surveys on sites in the Elan Valley as part of the HLF funded Elan Links project, including on an earthwork at Lluest Abercaethon (4), which seems to be a settlement site. It has also been fascinating of late to study LiDAR data and create records for areas of the Isle of Man for Manx National Heritage (5), our first overseas venture!



1



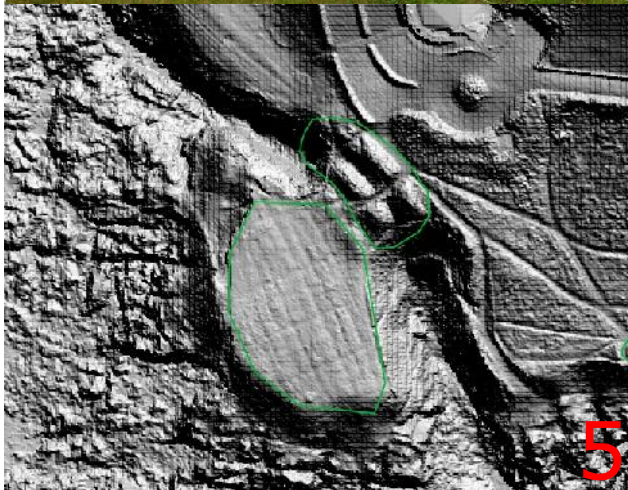
2



3



4



5



6



7